

County: Shawnee Fraction: SE NW SE NE Sec. 31 T. 11 S R. 16 E

**CORRECTION(S) to WATER WELL COMPLETION RECORD Form WWC-5 (to rectify lacking or incorrect information)**

Owner: KDHE KSMW 6

**If location corrected, was listed as:**

Section-Township-Range: 30-22-16E

**Location changed to:**

31-11-16E

Fraction (1/4 calls): \_\_\_\_\_

**Other changes:** Initial statements: \_\_\_\_\_

Changed to: \_\_\_\_\_

Comments: \_\_\_\_\_

Verification method: Used site map provided by driller, KGS mapper, Lat/Long, and address to verify S-T-R

Initials: SH Date: 11-10-2022

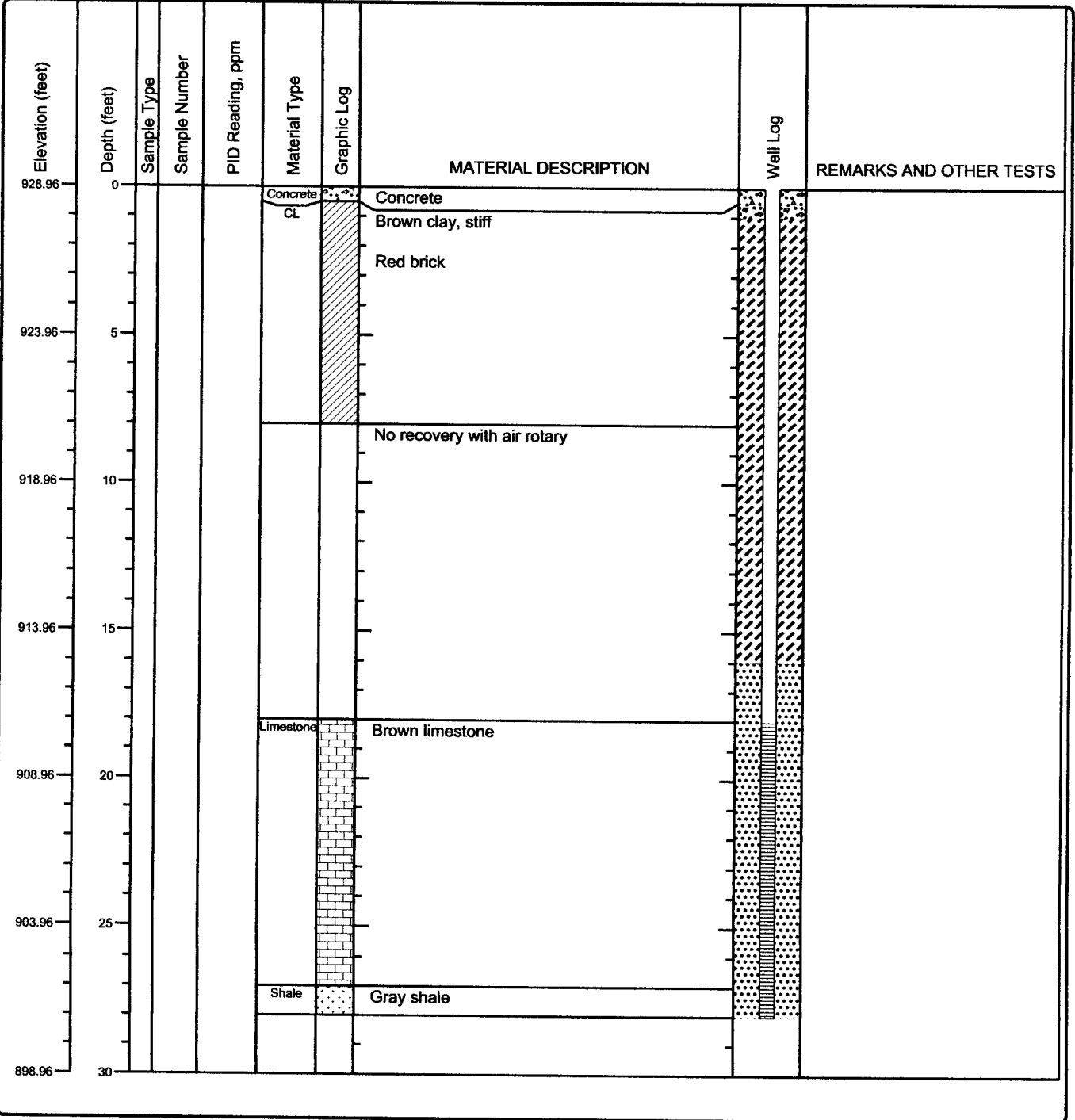
Submitted by:  Kansas Geological Survey, Data Resources Library, 1930 Constant Ave., Lawrence, KS 66047-3724  
 Kansas Dept. of Health & Environment, Bureau of Water, 1000 SW Jackson, Suite 420, Topeka, KS 66612-1367



31-11-16E

<b>Project:</b> PCE-South Kansas Avenue (Montgomery Ward) <b>Project Location:</b> 320 South Kansas Avenue, Topeka, Kansas <b>Project Number:</b> C4-089-73558	<b>ppB enviro-solutions</b> 112 SW 6th Ave., Suite 201 Topeka, Kansas 785.256.0045	<b>Log of Boring KSMW-6</b> <b>Sheet 1 of 1</b>
----------------------------------------------------------------------------------------------------------------------------------------------------------------------------	---------------------------------------------------------------------------------------------	----------------------------------------------------

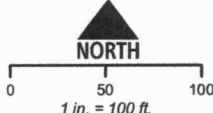
<b>Date(s) Drilled</b> 2/15/22 <b>Drilling Method</b> Hollow-Stem Auger/Air Rotary <b>Drill Rig Type</b> Geoprobe Model 7822 DT <b>Static Water Level and GW Elevation</b> <b>Borehole Backfill</b> Well Completion	<b>Logged By</b> J. Murphy <b>Drill String</b> 8.25-in OD HSA/6-in OD roller bit with air <b>Drilling Contractor</b> Razek - Tony Poulter <b>Sampling Method(s)</b> NA <b>Location</b> West portion of property	<b>Checked By</b> R. Weiser <b>Total Depth of Borehole</b> 28 <b>Surface Elevation</b> 928.96 <b>TOC Elevation</b> 928.60
---------------------------------------------------------------------------------------------------------------------------------------------------------------------------------------------------------------------------------	-----------------------------------------------------------------------------------------------------------------------------------------------------------------------------------------------------------------------------	------------------------------------------------------------------------------------------------------------------------------------



Macintosh HD:private:var:folders:z:56kdr\_ls329589bz02sww64c000gm:T:Temporary\Items:boreings\_temp:improfile.bgs\PPB\_Well.tbl



- Legend**
- SI Proposed Wells
  - Water
  - Stormwater
  - Sewer
  - Parcel Boundary



**FIGURE 3**  
**MONITORING WELL LOCATIONS**

**PCE - SOUTH KANSAS AVENUE - SITE INSPECTION**  
**400 AND 424 SOUTH KANSAS AVENUE, TOPEKA, KANSAS**

**KDHE#: C4-089-73558**

Source: NAIP 2019 and 2021 Google Earth || Location: NE 1/4 of Sec 31 - T11S - R16E, Shawnee County, KS



Drawn By: J Polak  
 Project Manager: J Polak  
 Date: 10/13/2021