





T.11 R.16E Sec.31 Shawnee County



**Legend**

- Monitoring Wells
- Study Area

**NORTH**

0 50 100  
1 in. = 150 ft.

**FIGURE 3**  
**MONITORING WELL LOCATIONS**

**PCE - SOUTH KANSAS AVENUE S12 - SITE INSPECTION**  
**600 TO 800 SOUTH KANSAS AVENUE, TOPEKA, KANSAS**

**KDHE#: C4-089-73558**

Source: NAIP 2019 and 2021 Google Earth || Location: SE 1/4 of Sec 31 - T11S - R16E, Shawnee County, KS

**HABITAT ARCHITECTS**

Drawn By: J Polak

Project Manager: J Polak

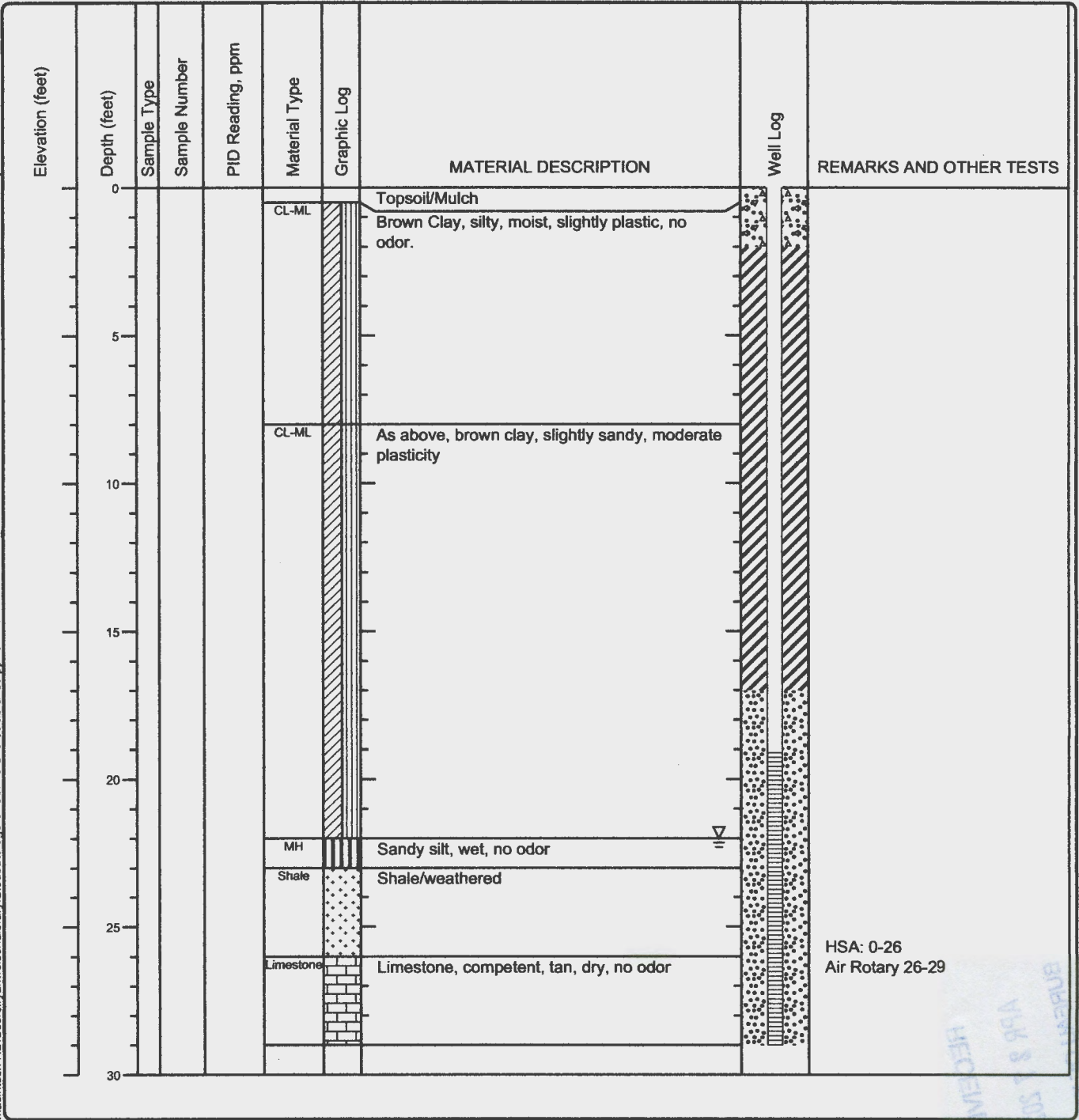
Date: 02/01/2023



Project: <b>PCE-South Kansas Avenue</b>	<b>ppB enviro-solutions</b> 112 SW 6th Avenue, Suite 201 Topeka, Kansas 785.256.0045	<b>Log of Boring KSMW-10</b> <b>Sheet 1 of 1</b>
Project Location: <b>Topeka, Shawnee County, Kansas</b>		
Project Number: <b>SA06973558004HAB</b>		

Date(s) Drilled: <b>3/22/23</b>	Logged By: <b>Chris Carey, P.G.</b>	Checked By: <b>Ryan Weiser, P.G.</b>
Drilling Method: <b>HSA/Air Rotary</b>	Drill String	Total Depth of Borehole: <b>29</b>
Drill Rig Type: <b>GeoProbe</b>	Drilling Contractor: <b>Razek</b>	Surface Elevation
Static Water Level and GW Elevation	Sampling Method(s)	TOC Elevation
Borehole Backfill	Location	

Macintosh HD:\Users\ryanweiser\Library\CloudStorage\OneDrive\Share\Library\enviro-solutions\ppB\_Habitat - Documents\KDHE Environmental Services Contract\Projects\PCE\_South\_Kansas\_S12\_boring\_logs.bpd\ppB\_Log\_Template\_2020.tbl



HSA: 0-26  
Air Rotary 26-29

RECEIVED  
APR 8 9 58 AM '23  
CJS & SPS  
FERTAL