



- ▭ KC Housing Authority Property Boundary
- ⊕ Monitoring Well
- Soil Boring
- Geotechnical Boring
- ▭ Current Building
- ▭ Former Tank Basins
- ▭ Commercial/Business District
- ▭ Residential
- Water
- Overhead Electric
- Gas
- Sewer

Notes:
 (1) Groundwater flow direction unknown, but inferred towards the southeast based on the location of the monitoring wells.
 (2) All ground utilities visible during the site visit are shown. Figures will be updated following the public and private utility locates conducted during the LSA.

METROPOLITAN EAST DISTRICT
 1207 9TH ST

CITY OF KANSAS CITY, MO
 309 WASHINGTON BLVD

UNIT STATES OF KANSAS
 850 N. E. 9TH ST

DESIGNED BY: CP
 DRAWN BY: CP
 CHECKED BY: JM
 APPROVED BY: CC
 DATE: FEBRUARY 2021

Site Map
 KC Housing Authority
 1124 North 9th St
 Kansas City, Kansas
 UA-105-15278

FIGURE 2

Limited Site Assessment Work Plan



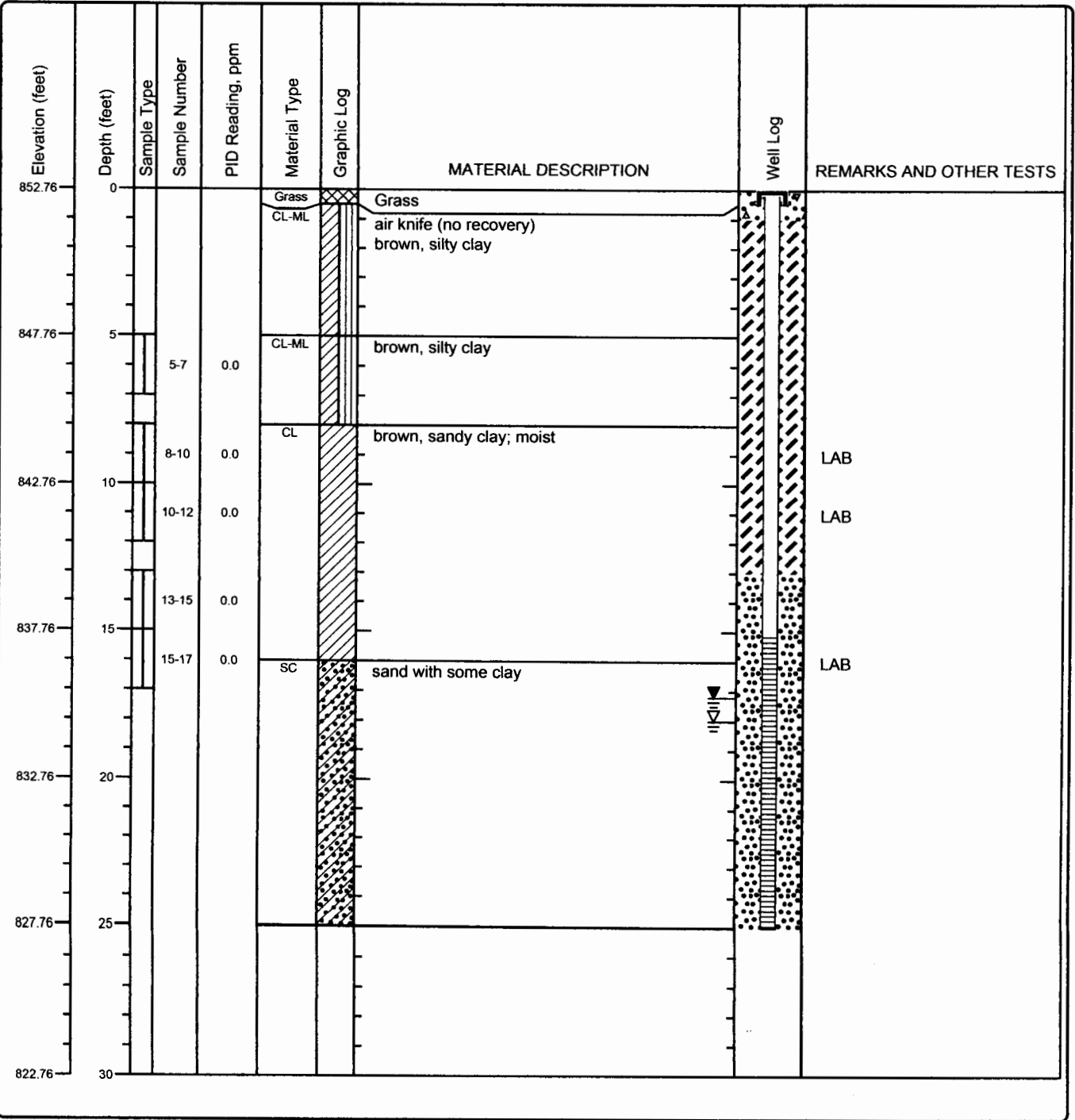
KWK'S PART, LLC
 650 STATE AVE

KSRBM INVESTMENTS, LLC
 650 STATE AVE

Scale: 0 12.5 25 50 Feet

Project: Kansas City Kansas Housing Authority	ppB enviro-solutions 112 SW 6th Ave., Suite 201 Topeka, Kansas 785.256.0045	Log of Boring MW-4 Sheet 1 of 1
Project Location: 1125 North 9th Street, Kansas City, Kansas		
Project Number: U4-105-15278		

Date(s) Drilled: 4/8/21 (Air Knife 4/5/21)	Logged By: J. Murphy	Checked By: C. Carey
Drilling Method: Direct Push, Hollow-Stem Auger	Drill String: 2.25-in OD, 8.25-in OD	Total Depth of Borehole: 25
Drill Rig Type: Geoprobe Model 7822 DT	Drilling Contractor: Razek Environmental	Surface Elevation: 852.76
Static Water Level and GW Elevation	Sampling Method(s): Dual Tube	TOC Elevation: 852.44
Borehole Backfill: well completion	Location: located west of tower	



Macintosh HD:Users:jamiemurphy:OneDrive - ppB enviro-solutions:Documents:UST Projects:KC Housing Authority (#20024):L.S.A. Boring Logs:KC Boring Logs:ba4fppB Well.tbl