



- KC Housing Authority
- Property Boundary
- Monitoring Well
- Soil Boring
- Geotechnical Boring
- Water
- Overhead Electric
- Gas
- Sewer
- Current Building
- Former Tank Basin
- Commercial/Business District
- Residential

Notes:
 (1) Groundwater flow direction unknown, but inferred towards the southeast based on the location of the monitoring wells.
 (2) All ground utilities visible during the site visit are shown. Figures will be updated following the public and private utility locates conducted during the LSA.

METROPOLITAN EAST DISTRICT
 1207 9TH ST

CITY OF KANSAS CITY, MO
 315 WASHINGTON BLVD

UNIT STATES OF MISSOURI
 650 NEBPA

DESIGNED BY: CP
 DRAWN BY: CP
 CHECKED BY: JM
 APPROVED BY: CC
 DATE: FEBRUARY 2021

Site Map
 KC Housing Authority
 1124 North 9th St
 Kansas City, Kansas
 UA-105-15278

FIGURE 2

Limited Site Assessment Work Plan

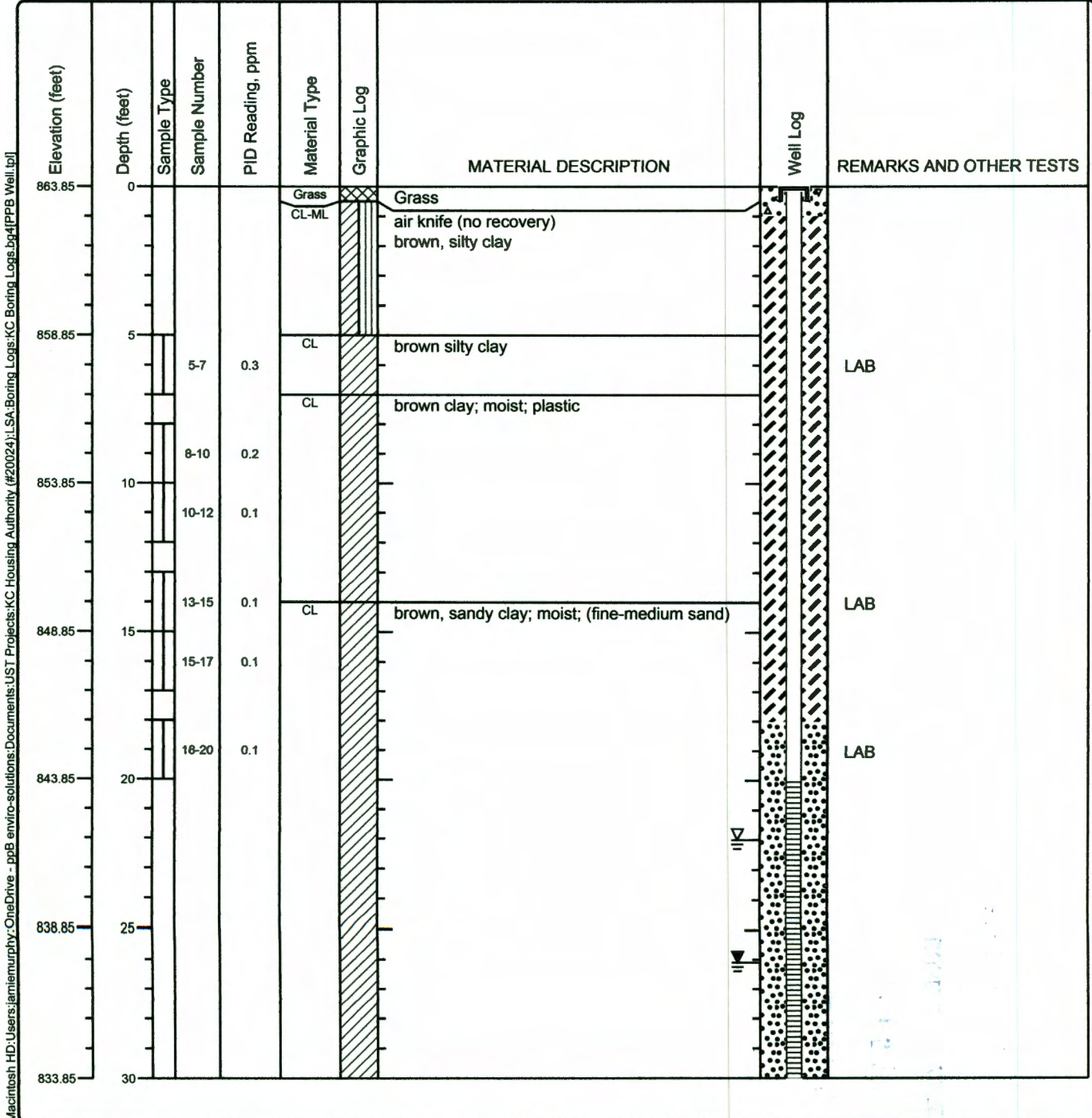


KWK'S PART, LLC
 650 STATE AVE

PERM INVESTMENTS, LLC
 650 STATE AVE

Project: Kansas City Kansas Housing Authority Project Location: 1125 North 9th Street, Kansas City, Kansas Project Number: U4-105-15278	ppB enviro-solutions 112 SW 6th Ave., Suite 201 Topeka, Kansas 785.256.0045	Log of Boring MW-8 Sheet 1 of 2
--	---	--

Date(s) Drilled: 4/8/21 (Air Knife 4/5/21)	Logged By: J. Murphy	Checked By: C. Carey
Drilling Method: Direct Push, Hollow-Stem Auger	Drill String: 2.25-in OD, 8.25-in OD	Total Depth of Borehole: 35
Drill Rig Type: Geoprobe Model 7822 DT	Drilling Contractor: Razek Environmental	Surface Elevation: 863.85
Static Water Level and GW Elevation:	Sampling Method(s): Dual Tube	TOC Elevation: 863.57
Borehole Backfill: well completion	Location: located on south-central side of property near parking lot	


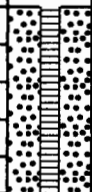


Macintosh HD:\Users\jamie.murphy\OneDrive - ppB enviro-solutions\Documents\JST Projects\KC Housing Authority (#2024)\LSA\Boring_Logs\KC Boring_Logs_bor4[PPB Well].log

Project: Kansas City Kansas Housing Authority
 Project Location: 1125 North 9th Street, Kansas City, Kansas
 Project Number: U4-105-15278

ppB enviro-solutions
 112 SW 6th Ave., Suite 201
 Topeka, Kansas
 785.256.0045

Log of Boring MW-8
 Sheet 2 of 2

Elevation (feet)	Depth (feet)	Sample Type	Sample Number	PID Reading, ppm	Material Type	Graphic Log	MATERIAL DESCRIPTION	Well Log	REMARKS AND OTHER TESTS
833.85	30				CL		brown, sandy clay; moist; (fine-medium sand)		
828.85	35								
823.85	40								
818.85	45								
813.85	50								
808.85	55								
803.85	60								
798.85	65								

Macintosh HD:Users:jamiemurphy:OneDrive - ppB enviro-solutions:Documents:UST Projects:KC Housing Authority (#20024):LSA:Boring_Logs:KC Boring_Logs:bo4[PPB Well.tbl]