

Riley

12-11-6E

RECEIVED

JAN 15 2020

BUREAU OF WATER

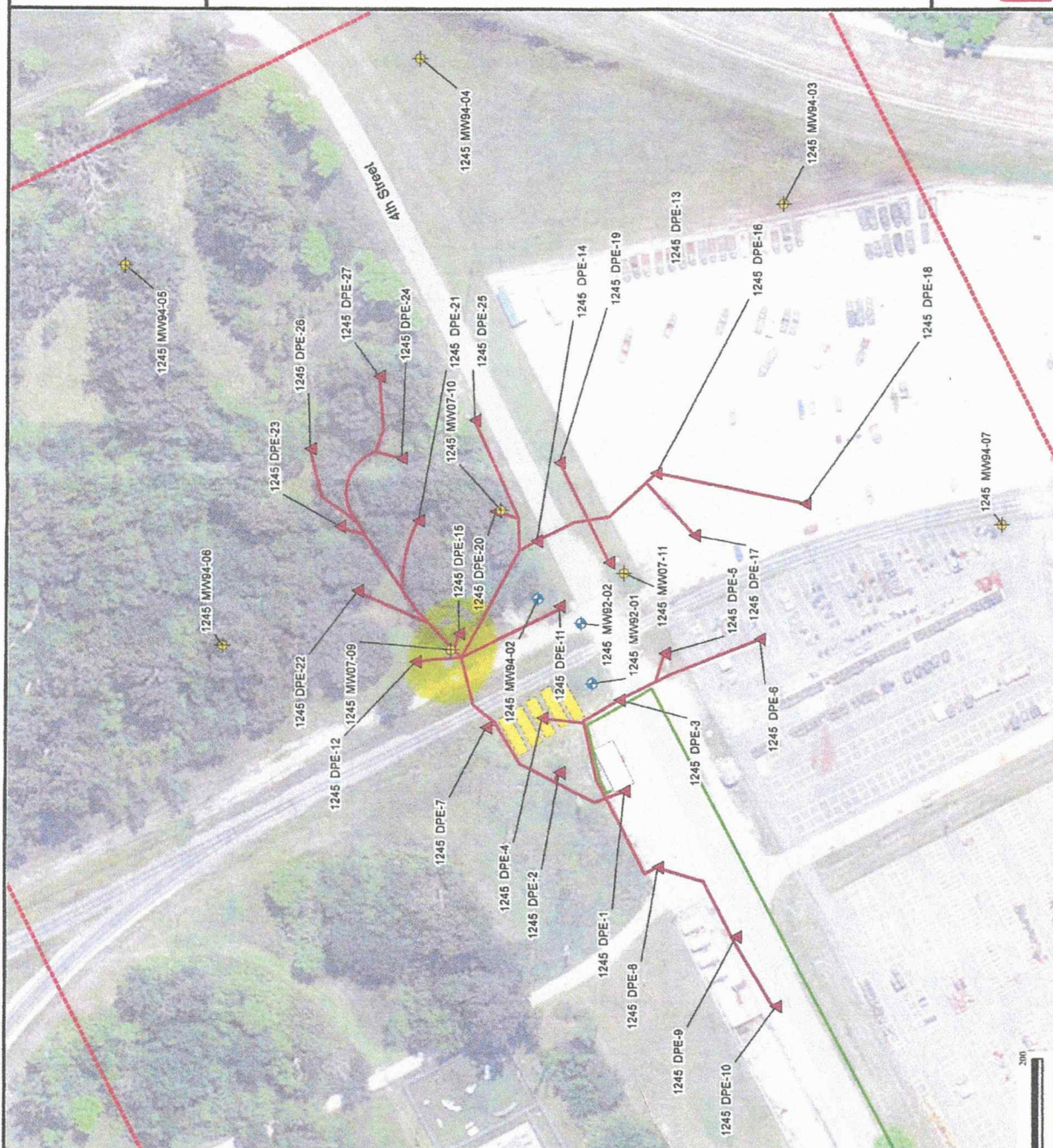
Figure 2.8
FTRI-066
(POL Site 1245)

- Legend
- ◆ Performance Monitoring Well
 - ▲ Extraction Well
 - ⊕ Perimeter Monitoring Well (Gauge Only)
 - Site Boundary
 - Discharge Piping
 - Piping/Trench Runs
 - Treatment System Enclosure
 - Underground Storage System

Notes:
 DPE=diesel phase extraction
 MW=Monitoring well
 POL=petroleum, oil, and lubricant



LWA
 Los Alamos Technical Associates, Inc.



1245 FTRI-066 (POL Site 1245) Sanjour Technical Associates, Inc.

