

Riley

12-11-6E

RECEIVED

JAN 15 2020

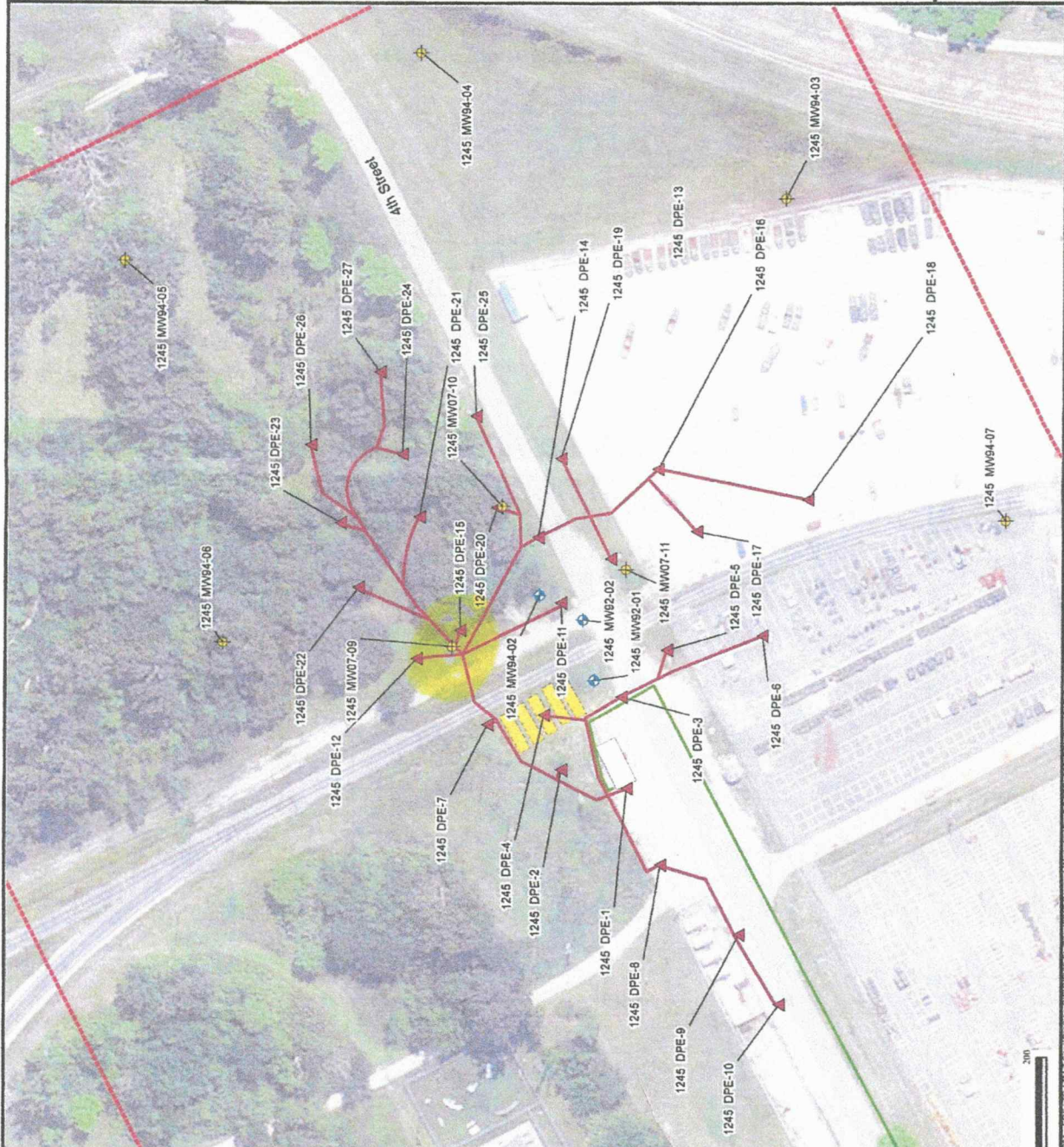
BUREAU OF WATER

Figure 2.8
FTRI-066
(POL Site 1245)

Legend

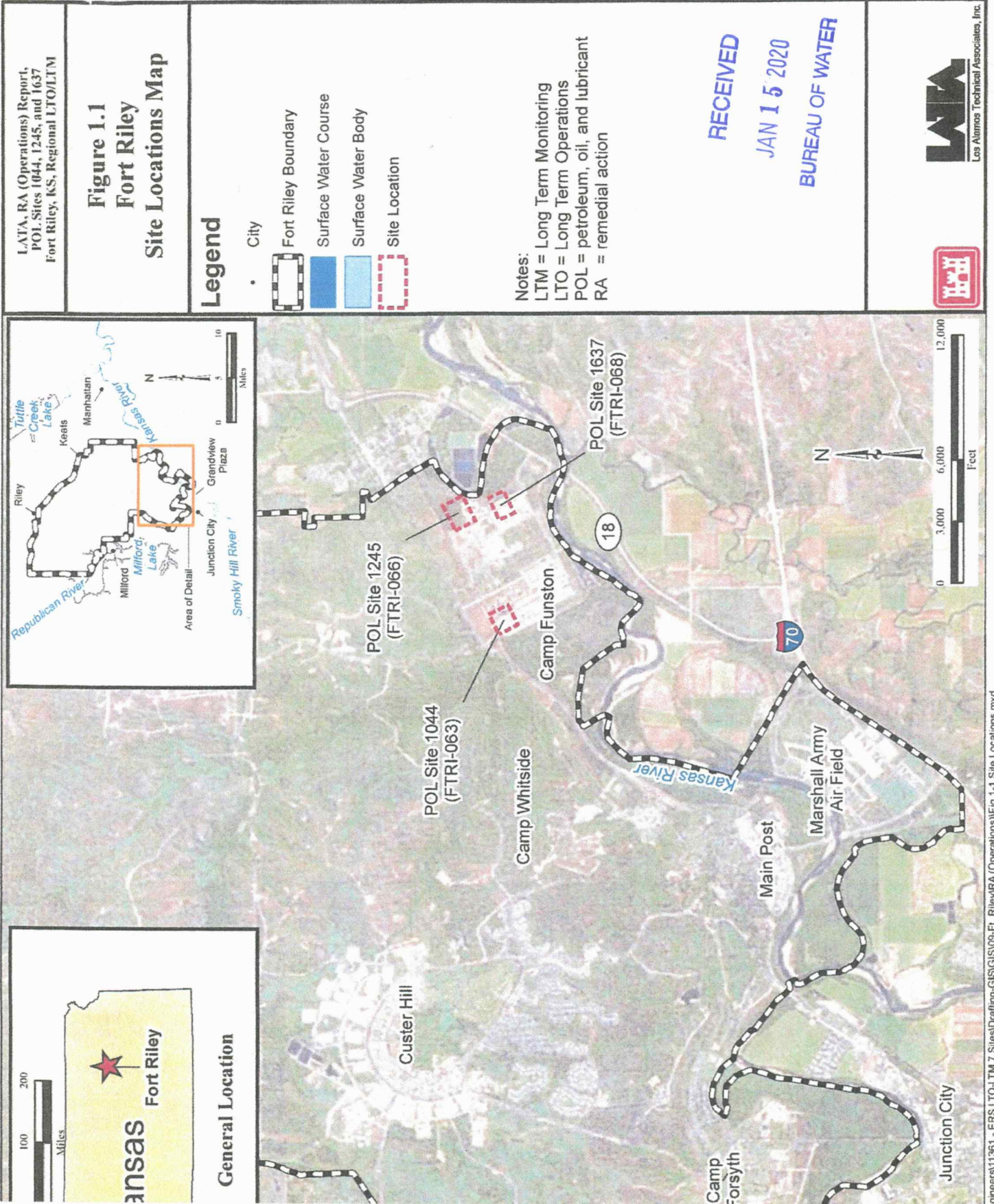
- Performance Monitoring Well
- Extraction Well
- Perimeter Monitoring Well (Gauge Only)
- Site Boundary
- Discharge Piping
- Piping/Trench Runs
- Treatment System Enclosure
- Underground Storage System

Notes:
 DPE= diesel phase extraction
 MW= Monitoring well
 POL= petroleum, oil, and lubricant



Riley

14-11-6E



LATA, RA (Operations) Report,
 POL Sites 1044, 1245, and 1637
 Fort Riley, KS, Regional LTO/LTM

Figure 1.1 Fort Riley Site Locations Map

Legend

- City
- Fort Riley Boundary
- Surface Water Course
- Surface Water Body
- Site Location

Notes:
 LTM = Long Term Monitoring
 LTO = Long Term Operations
 POL = petroleum, oil, and lubricant
 RA = remedial action

RECEIVED
JAN 15 2020
BUREAU OF WATER

