

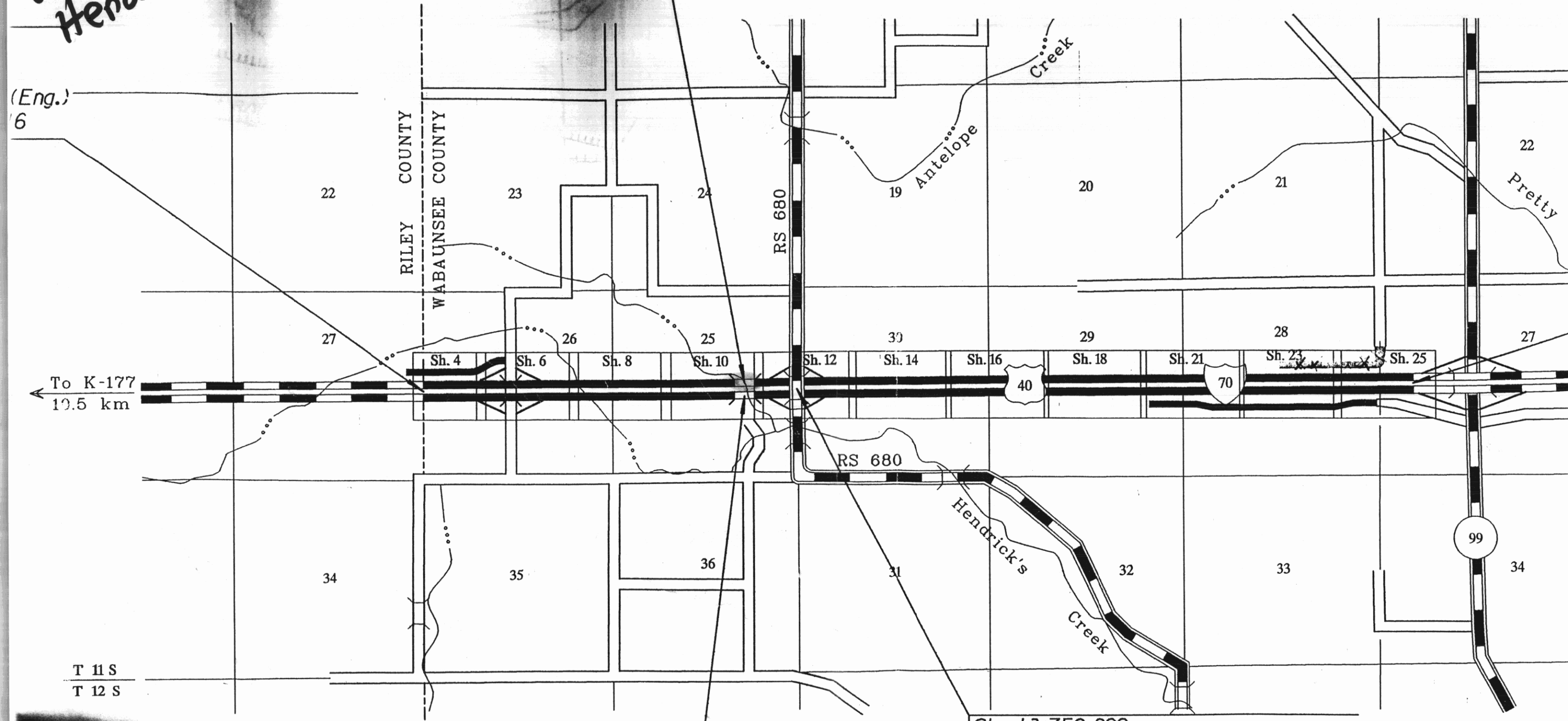
# Wabaunsee County

## I-70

Project #  
70-99 K-564  
WB I-70 on  
Hendricks  
Creek

$W\frac{1}{2}$ , NE $\frac{1}{4}$ , Sec 25, T 11S, R 9E

Sta. 13+735.937  
Br. No. 70-99-1.71 (001)  
9.754 m - 12.192 m - 9.754 m  
R.C. Slab Spans  
15.296 m Roadway, 30° Skew Lt.



Sta. 13+750.299

Sta. 13+750.299  
Br. No. 70-99-2.00 (003)

9 E  
10 E

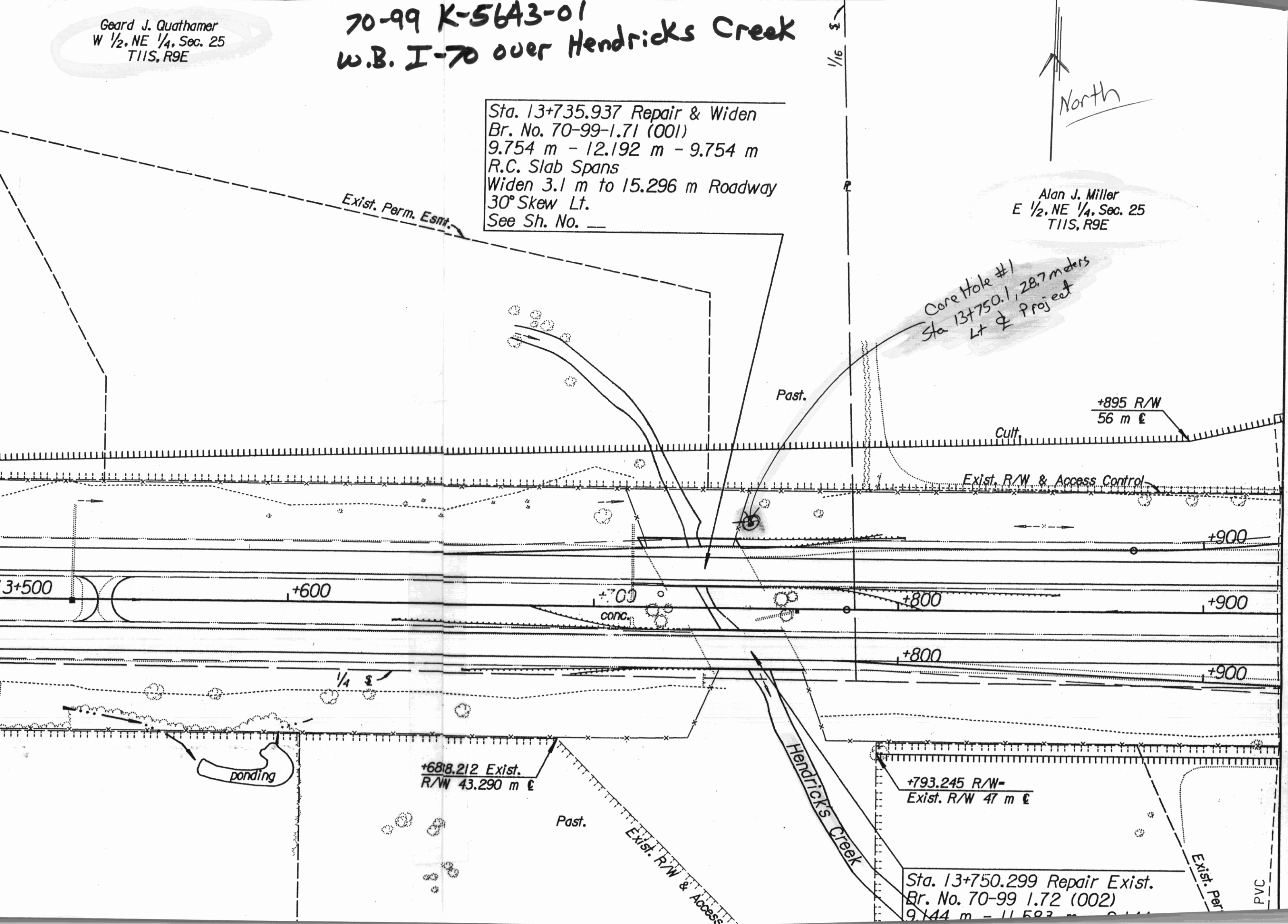
Geard J. Quathamer  
W 1/2, NE 1/4, Sec. 25  
T11S, R9E

# 70-99 K-5643-01 W.B. I-70 over Hendricks Creek

Sta. 13+735.937 Repair & Widen  
Br. No. 70-99-1.71 (001)  
9.754 m - 12.192 m - 9.754 m  
R.C. Slab Spans  
Widen 3.1 m to 15.296 m Roadway  
30° Skew Lt.  
See Sh. No. —

Alan J. Miller  
E 1/2, NE 1/4, Sec. 25  
T11S, R9E

Core Hole #1  
Sta 13+750.1, 28.7 meters  
Lt & Project



Exist. Perm. Esmt.

Past.

+895 R/W  
56 m E

Cult.

Exist. R/W & Access Control

+900

3+500

+600

+700  
conc.

+800

+900

+800

+900

ponding

+6818.212 Exist.  
R/W 43.290 m E

Past.

Exist. R/W & Access

Hendricks Creek

+793.245 R/W=  
Exist. R/W 47 m E

Sta. 13+750.299 Repair Exist.  
Br. No. 70-99 1.72 (002)  
9.144 m - 11.583 m - 9.144 m

Exist. Per

PVC