

WATER WELL RECORD

Form WWC-5

Division of Water Resources App. No.

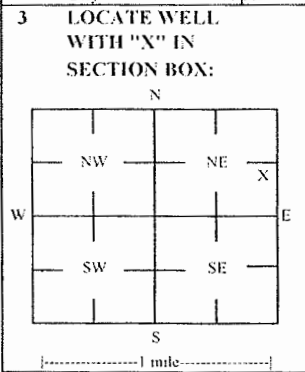
Well ID

NMW20

Original Record Correction Change in Well Ust

1 LOCATION OF WATER WELL: County Shawnee Fraction SW 1/4 NE 1/4 SE 1/4 NE 1/4 Section Number 36 Township Number T 12 S Range Number R 15 E W

2 WELL OWNER: Last Name: Business: Lindemuth, Inc. Address: 125 SW Gage Blvd City Topeka State: KS ZIP: 66606 Street or Rural Address where well is located (if unknown, distance and direction from nearest town or intersection): 416 SW 57th St. Topeka, KS 66609



3 LOCATE WELL WITH 'X' IN SECTION BOX: 4 DEPTH OF COMPLETED WELL: 12.5 ft Depth(s) Groundwater Encountered: 1) ft 2) ft 3) ft or 4) Dry Well WELL'S STATIC WATER LEVEL: 3.74 ft

5 Latitude: 38.96617 (decimal degrees) Longitude: 95.68895 (decimal degrees) Horizontal Datum: WGS 84 NAD 83 NAD 27 Source for Latitude/Longitude: GPS (unit make/model): (WAAS enabled? Yes No) Land Survey Topographic Map Online Mapper

7 WELL WATER TO BE USED AS: 1 Domestic: Household Lawn & Garden Livestock Irrigation Feedlot Industrial 5 Public Water Supply: well ID 6 Dewatering: how many wells? 7 Aquifer Recharge: well ID 8 Monitoring: well ID NMW20 9 Environmental Remediation: well ID Air Sparge Soil Vapor Extractor Recovery Injection 10 Oil Field Water Supply: lease 11 Test Hole: well ID Cased Uncased Geotechnical 12 Geothermal: How many bores? a) Closed Loop Horizontal Vertical b) Open Loop Surface Discharge Inj. of Water Other (specify):

Was a chemical/bacteriological sample submitted to KDHE? Yes No Water well disinfected? Yes No If yes, date sample was submitted:

8 TYPE OF CASING USED: Steel PVC Other CASING JOINTS: Glued Clamped Welded Threaded Casing diameter 2 in. to 3 ft. Diameter in. to ft. Diameter in. to ft. Casing height above land surface -0.28 in. Weight lbs./ft. Well thickness or gauge No TYPE OF SCREEN OR PERFORATION MATERIAL: Steel Stainless Steel Fiberglass PVC Other (Specify) SCREEN OR PERFORATION OPENINGS ARE: Continuous Slot Mill Slot Gauze Wrapped Torch Cut Drilled Holes Other (Specify) Louvered Shutter Key Punched Wire Wrapped Saw Cut None (Open Hole) SCREEN-PERFORATED INTERVALS: From 3 ft. to 12.5 ft. From ft. to ft. From ft. to ft. GRAVEL PACK INTERVALS: From 1.5 ft. to 12.5 ft. From ft. to ft. From ft. to ft.

9 GROUT MATERIAL: Neat cement Cement grout Bentonite Other Concrete: 0-0.7 Grout intervals: From 0.7 ft. to 1.5 ft. From ft. to ft. From ft. to ft.

Nearest source of possible contamination: Septic Tank Lateral Lines Pit Privy Livestock Pens Insecticide Storage Sewer Lines Cess Pool Sewage Lagoon Fuel Storage Abandoned Water Well Watertight Sewer Lines Seepage Pit Feedyard Fertilizer Storage Oil Well / Gas Well Other (Specify) Direction from well? N-NE Distance from well? ~240 ft

Table with columns: FROM, TO, LITHOLOGIC LOG, FROM, TO, LITHO. LOG (cont.) or PLUGGING INTERVALS. Rows: 0-0.5 Topsoil, 0.5-9 Silty clay, 9-9.5 Limestone, 9.5-12.5 Weathered mudstone/shale

Notes: KDHE ID: Pauline Farm Store: C-408971586 Target of monitoring well is shallow groundwater. <20' of grout was installed at the direction of KDHE.

11 CONTRACTOR'S OR LANDOWNER'S CERTIFICATION: This water well was constructed, reconstructed, or plugged under my jurisdiction and was completed on (mo-day-year) 2/20/19 and this record is true to the best of my knowledge and belief. Kansas Water Well Contractor's License No 757 This Water Well Record was completed on (mo-day-year) 6/24/19 under the business name of Larsen & Associates, Inc. Signature

Mail 1 white copy along with a fee of \$5.00 for each constructed well to: Kansas Department of Health and Environment, Bureau of Water, Construction, 1000 SW Jackson St., Suite 420, Topeka, Kansas 66612-1367. Mail one to Water Well Owner and retain one for your records. Telephone 785-296-5524

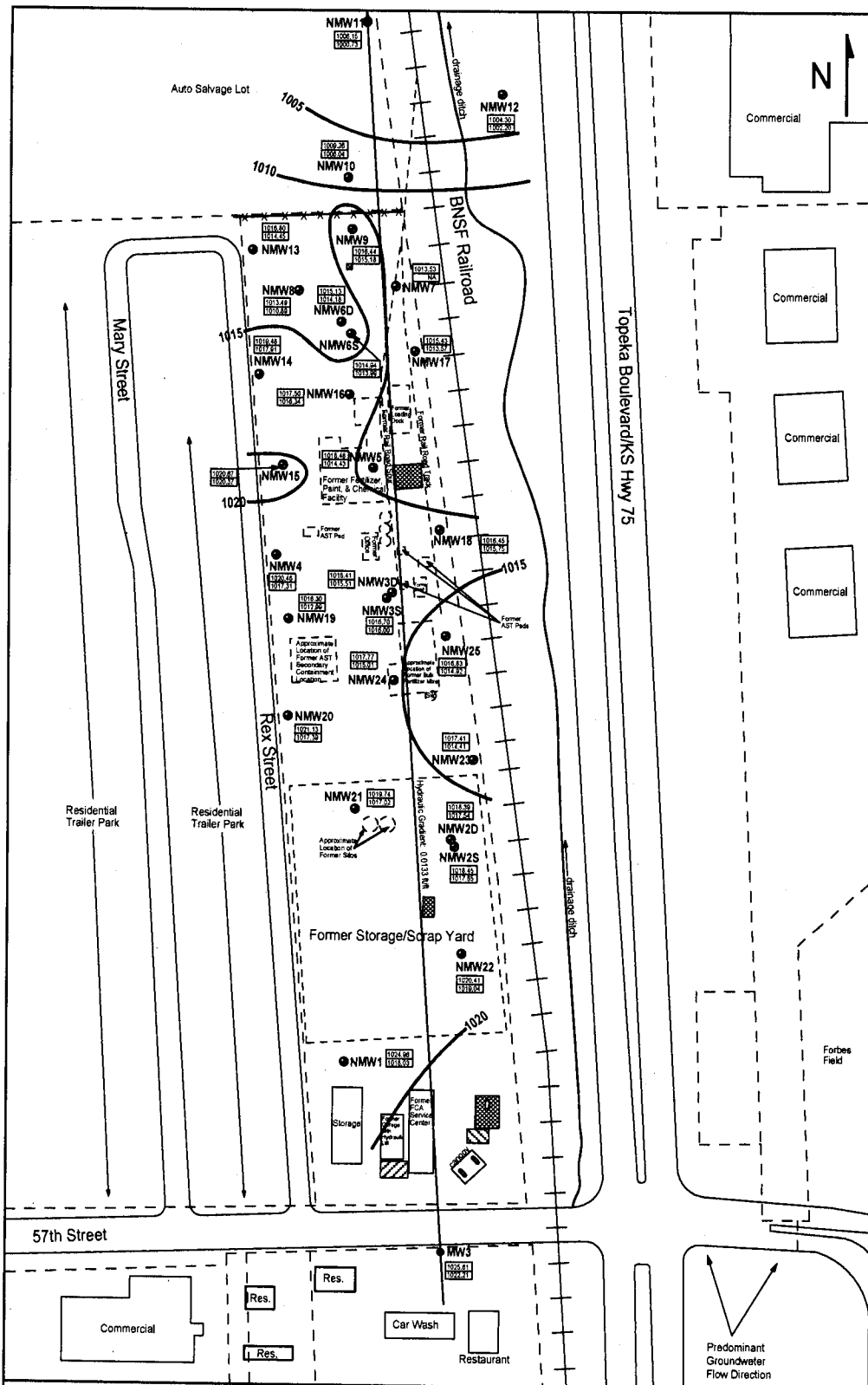
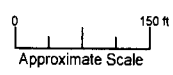


FIGURE 2 - GROUNDWATER FLOW MAP FOR THE 2019 PHASE II AND PHASE III ADDENDUM



1311 E 25th St., Suite B (785) 841-8707 office
Lawrence, KS 66046 (785) 865-4282 fax

PROJECT:
Pauline Farm Store
416 SW 57th Street
Topeka, KS
KDHE ID: C408971586
DATE: 4/9/19



- LEGEND:**
- Approximate Location of Former UST Basin and Pump Island
 - Approximate Location of Inactive UST Basin and Pump Islands
 - Approximate Location of Former ASTs
 - Monitoring Well
 - Monitoring Well: KDHE TF Site
 - Pauline Farmers Coop South (U4-089-10005)
 - 2338.37 Casing Elevation (AMSL)
 - 2292.53 Groundwater Elevation (AMSL)
 - 2235 Equipotential Line (AMSL)

NOTE: NMW19 is anomalous; therefore the data was not used to determine groundwater flow.

DENNIS L HANDKE

1820 NW 59th Terrace
TOPEKA, KANSAS 66618
785-286-4047 Home
785-286-1990 Fax

Jess Chapman
Larsen & Associates
1311 E. 25th Street, Suite B
Lawrence, Kansas, 66046

March 20, 2019

RE: Monitor Well Elevation Survey
416 W. 57h St., Topeka, Kansas

Proj. 19-00K
Pauline Farm Store
C408971586

Bench Mark: Square cut on East corner of SW concrete pump island near South edge of property.
Elev: 1024.81 North 2711.77 West 137.40 (from SE Cor. Sec. 36-12-15E)

NMW-13	rim	1017.22	North	3932.71	NW1/4,NE1/4,SE1/4,NE1/4
	top pipe	1016.80	West	382.15	Lat= 38.96787 Long = 95.68904
NMW-14	rim	1019.94	North	3801.94	NW1/4,NE1/4,SE1/4,NE1/4
	top pipe	1019.48	West	374.97	Lat= 38.96750 Long = 95.68901
NMW-15	rim	1021.18	North	3679.58	NE1/4,NE1/4,SE1/4,NE1/4
	top pipe	1020.67	West	331.35	Lat= 38.96676 Long = 95.68900
NMW-16	rim	1017.81	North	3784.66	NE1/4,NE1/4,SE1/4,NE1/4
	top pipe	1017.50	West	263.17	Lat= 38.96745 Long = 95.68862
NMW-17	rim	1015.89	North	3801.01	NE1/4,NE1/4,SE1/4,NE1/4
	top pipe	1015.43	West	209.77	Lat= 38.96750 Long = 95.68843
NMW-18	rim	1016.73	North	3558.58	SE1/4,NE1/4,SE1/4,NE1/4
	top pipe	1016.45	West	183.79	Lat= 38.96683 Long = 95.68834
NMW-19	rim	1016.76	North	3451.91	SW1/4,NE1/4,SE1/4,NE1/4
	top pipe	1016.30	West	358.95	Lat= 38.96654 Long = 95.68896
NMW-20	rim	1021.41	North	3317.00	SW1/4,NE1/4,SE1/4,NE1/4
	top pipe	1021.13	West	357.20	Lat= 38.96617 Long = 95.68895
NMW-21	rim	1020.25	North	3258.89	NE1/4,SE1/4,SE1/4,NE1/4
	top pipe	1019.74	West	289.93	Lat= 38.96601 Long = 95.68872
NMW-22	rim	1020.67	North	3061.96	NE1/4,SE1/4,SE1/4,NE1/4
	top pipe	1020.41	West	134.45	Lat= 38.96547 Long = 95.68817
NMW-23	rim	1017.72	North	3280.96	NE1/4,SE1/4,SE1/4,NE1/4
	top pipe	1017.41	West	145.67	Lat= 38.96607 Long = 95.68821
NMW-24	rim	1017.98	North	3365.35	SE1/4,NE1/4,SE1/4,NE1/4
	top pipe	1017.77	West	249.50	Lat= 38.96630 Long = 95.68857
NMW-25	rim	1017.11	North	3423.97	SE1/4,NE1/4,SE1/4,NE1/4
	top pipe	1016.83	West	180.02	Lat= 38.96646 Long = 95.68833