

WATER WELL RECORD

Form WWC-5

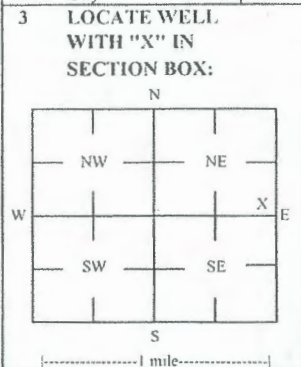
Division of Water Resources App. No.

Well ID NMW21

Original Record Correction Change in Well Use

1 LOCATION OF WATER WELL: County Shawnee Fraction NE 1/4 SE 1/4 SE 1/4 NE 1/4 Section Number 36 Township Number T 12 S Range Number R 15 E W

2 WELL OWNER: Last Name: Business: Lindemuth, Inc. Address: 125 SW Gage Blvd City: Topeka State: KS ZIP: 66606 Street or Rural Address where well is located (if unknown, distance and direction from nearest town or intersection): If at owner's address, check here: 416 SW 57th St, Topeka, KS 66609



4 DEPTH OF COMPLETED WELL: 9.5 ft Depth(s) Groundwater Encountered: 1) 2) 3) 4) Dry Well WELL'S STATIC WATER LEVEL: 2.72 ft X below land surface, measured on (mo-day-yr) 4/8/19 Pump test data: Well water was after hours pumping gpm Water well was after hours pumping gpm Estimated Yield: gpm Bore Hole Diameter: 7.25 in to ft, and in to ft

5 Latitude: 38.96601 (decimal degrees) Longitude: 95.68872 (decimal degrees) Horizontal Datum: X WGS 84 NAD 83 NAD 27 Source for Latitude/Longitude: GPS (unit make/model): (WAAS enabled? Yes No) X Land Survey Topographic Map Online Mapper 6 Elevation 1019.74 ft Ground Level X TOC Source: X Land Survey GPS Topographic Map Other

7 WELL WATER TO BE USED AS: 1 Domestic: Household Lawn & Garden Livestock Irrigation Feedlot Industrial 2 Public Water Supply: well ID 3 Dewatering: how many wells? 4 Aquifer Recharge: well ID 5 Monitoring: well ID NMW21 6 Environmental Remediation: well ID Air Sparge Soil Vapor Extractor Recovery Injection 7 Oil Field Water Supply: lease 8 Test Hole: well ID Cased Uncased Geotechnical 9 Geothermal: How many bores? a) Closed Loop Horizontal Vertical b) Open Loop Surface Discharge Inj. of Water Other (specify):

Was a chemical/bacteriological sample submitted to KDHE? Yes No X No If yes, date sample was submitted:

8 TYPE OF CASING USED: Steel PVC Other CASING JOINTS: Glued Clamped Welded X Threaded Casing diameter 2 in. to 3.5 ft. Diameter in. to ft. Diameter in. to ft. Casing height above land surface -0.51 in. Weight lbs./ft. Well thickness or gauge No

TYPE OF SCREEN OR PERFORATION MATERIAL: Steel Stainless Steel Fiberglass X PVC Other (Specify) Brass Galvanized Steel Concrete tile None used (open hole)

SCREEN OR PERFORATION OPENINGS ARE: Continuous Slot X Mill Slot Gauze Wrapped Torch Cut Drilled Holes Other (Specify) Louvered Shutter Key Punched Wire Wrapped Saw Cut None (Open Hole)

SCREEN-PERFORATED INTERVALS: From 3.5 ft. to 9.5 ft. From ft. to ft. From ft. to ft. GRAVEL PACK INTERVALS: From 1.5 ft. to 9.5 ft. From ft. to ft. From ft. to ft.

9 GROUT MATERIAL: Neat cement Cement grout X Bentonite X Other Concrete: 0-0.7 Grout intervals: From 0.7 ft. to 1.5 ft. From ft. to ft. From ft. to ft.

Nearest source of possible contamination: Septic Tank Lateral Lines Pit Privy Livestock Pens Insecticide Storage Sewer Lines Cess Pool Sewage Lagoon X Fuel Storage Abandoned Water Well Watertight Sewer Lines Seepage Pit Feedyard Fertilizer Storage Oil Well / Gas Well Other (Specify)

Direction from well? N-NW Distance from well? ~365 ft

Table with 6 columns: FROM, TO, LITHOLOGIC LOG, FROM, TO, LITHO. LOG (cont.) or PLUGGING INTERVALS. Rows include Topsoil: mostly silty clay, Silty clay, Limestone, Weathered mudstone/shale.

Notes: KDHE ID: Pauline Farm Store: C408971586 Target of monitoring well is shallow groundwater, <20' of grout was installed at the direction of KDHE.

11 CONTRACTOR'S OR LANDOWNER'S CERTIFICATION: This water well was X constructed, reconstructed, or plugged under my jurisdiction and was completed on (mo-day-year) 2/20/19 and this record is true to the best of my knowledge and belief. Kansas Water Well Contractor's License No 757 This Water Well Record was completed on (mo-day-year) 6/24/19 under the business name of Larsen & Associates, Inc. Signature

Mail 1 white copy along with a fee of \$5.00 for each constructed well to: Kansas Department of Health and Environment, Bureau of Water, C-12 Section, 1000 SW Jackson St., Suite 420, Topeka, Kansas 66612-1367. Mail one to Water Well Owner and retain one for your records. Telephone 785-296-5524. Visit us at http://www.kdheks.gov/waterwell/index.html KSA 82a-1212 Revised 7/10/2015

DENNIS L HANDKE

1820 NW 59th Terrace
TOPEKA, KANSAS 66618
785-286-4047 Home
785-286-1990 Fax

Jess Chapman
Larsen & Associates
1311 E. 25th Street, Suite B
Lawrence, Kansas, 66046

March 20, 2019

RE: Monitor Well Elevation Survey
416 W. 57h St., Topeka, Kansas

Proj. 19-00K
Pauline Farm Store
C408971586

Bench Mark: Square cut on East corner of SW concrete pump island near South edge of property.
Elev: 1024.81 North 2711.77 West 137.40 (from SE Cor. Sec. 36-12-15E)

NMW-13	rim	1017.22	North	3932.71	NW1/4,NE1/4,SE1/4,NE1/4
	top pipe	1016.80	West	382.15	Lat= 38.96787 Long = 95.68904
NMW-14	rim	1019.94	North	3801.94	NW1/4,NE1/4,SE1/4,NE1/4
	top pipe	1019.48	West	374.97	Lat= 38.96750 Long = 95.68901
NMW-15	rim	1021.18	North	3679.58	NE1/4,NE1/4,SE1/4,NE1/4
	top pipe	1020.67	West	331.35	Lat= 38.96676 Long = 95.68900
NMW-16	rim	1017.81	North	3784.66	NE1/4,NE1/4,SE1/4,NE1/4
	top pipe	1017.50	West	263.17	Lat= 38.96745 Long = 95.68862
NMW-17	rim	1015.89	North	3801.01	NE1/4,NE1/4,SE1/4,NE1/4
	top pipe	1015.43	West	209.77	Lat= 38.96750 Long = 95.68843
NMW-18	rim	1016.73	North	3558.58	SE1/4,NE1/4,SE1/4,NE1/4
	top pipe	1016.45	West	183.79	Lat= 38.96683 Long = 95.68834
NMW-19	rim	1016.76	North	3451.91	SW1/4,NE1/4,SE1/4,NE1/4
	top pipe	1016.30	West	358.95	Lat= 38.96654 Long = 95.68896
NMW-20	rim	1021.41	North	3317.00	SW1/4,NE1/4,SE1/4,NE1/4
	top pipe	1021.13	West	357.20	Lat= 38.96617 Long = 95.68895
NMW-21	rim	1020.25	North	3258.89	NE1/4,SE1/4,SE1/4,NE1/4
	top pipe	1019.74	West	289.93	Lat= 38.96601 Long = 95.68872
NMW-22	rim	1020.67	North	3061.96	NE1/4,SE1/4,SE1/4,NE1/4
	top pipe	1020.41	West	134.45	Lat= 38.96547 Long = 95.68817
NMW-23	rim	1017.72	North	3280.96	NE1/4,SE1/4,SE1/4,NE1/4
	top pipe	1017.41	West	145.67	Lat= 38.96607 Long = 95.68821
NMW-24	rim	1017.98	North	3365.35	SE1/4,NE1/4,SE1/4,NE1/4
	top pipe	1017.77	West	249.50	Lat= 38.96630 Long = 95.68857
NMW-25	rim	1017.11	North	3423.97	SE1/4,NE1/4,SE1/4,NE1/4
	top pipe	1016.83	West	180.02	Lat= 38.96646 Long = 95.68833

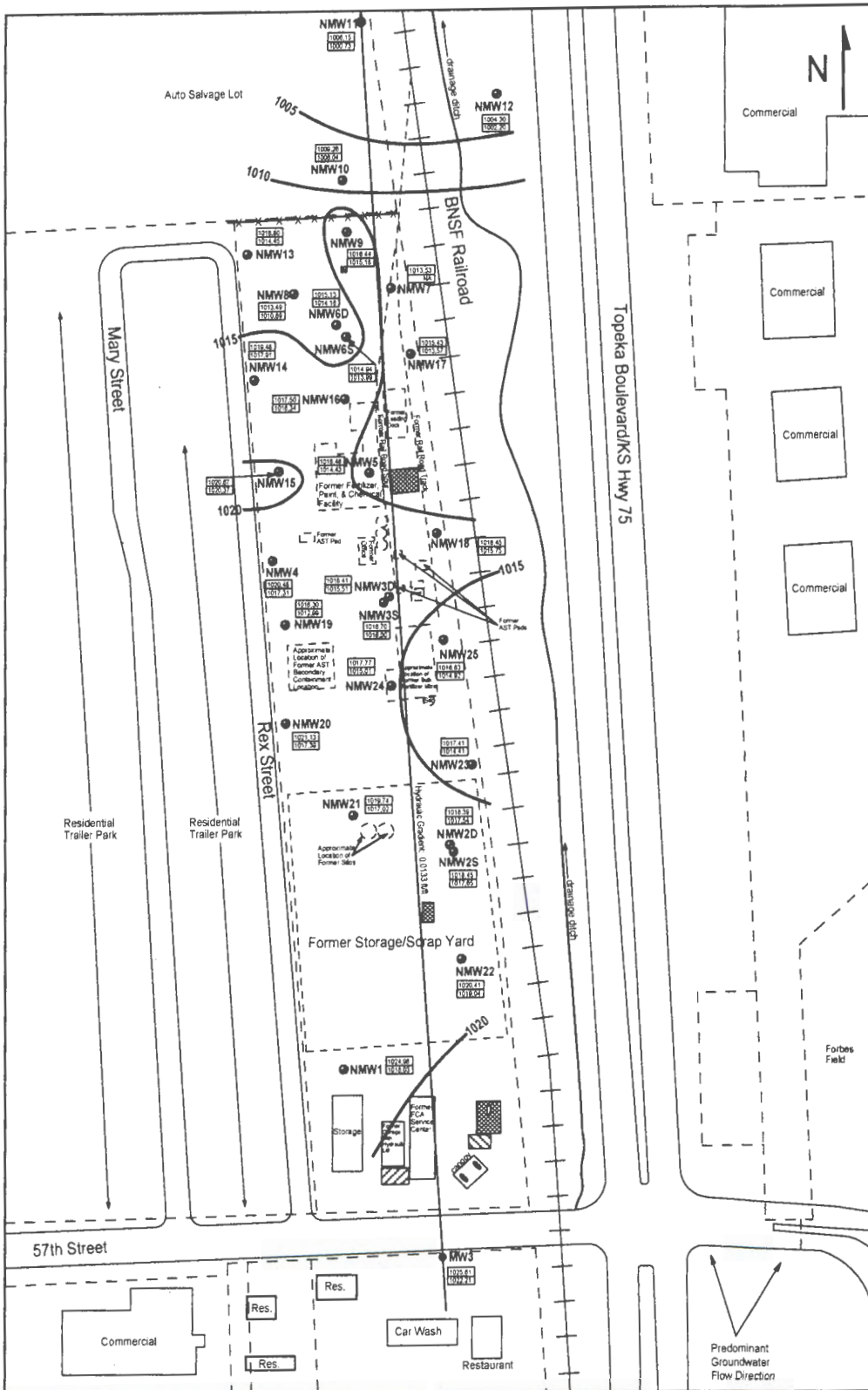
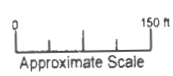


FIGURE 2 - GROUNDWATER FLOW MAP FOR THE 2019 PHASE II AND PHASE III ADDENDUM

- LEGEND:**
- Approximate Location of Former UST Basin and Pump Island
 - Approximate Location of Inactive UST Basin and Pump Islands
 - Approximate Location of Former ASTs
 - Monitoring Well
 - Monitoring Well KDHE TF Site
 - Pauline Farmers Coop South (U4-089-10005)
 - Casing Elevation (AMSL)
 - Groundwater Elevation (AMSL)
 - Equipotential Line (AMSL)

PROJECT:
 Pauline Farm Store
 416 SW 57th Street
 Topeka, KS
 KDHE ID: C408971586
 DATE: 4/9/19



1311 E 25th St., Suite B (785) 841-8707 office
 Lawrence, KS 66046 (785) 865-4282 fax

NOTE: NMW19 is anomalous, therefore the data was not used to determine groundwater flow.