

DENNIS L HANDKE

1820 NW 59th Terrace
TOPEKA, KANSAS 66618
785-286-4047 Home

Jess Chapman
Larsen & Assoc.
1311 E. 25th St., Suite B
Lawrence, Kansas 66046

July 28, 2021

RE: Monitor Well Elevation Survey
1801 W. 2nd St., Lawrence, Kansas

Proj. 21-00U
Miller Mart #420/Tri-Angle
KDHE ID U4-023-13112/15061

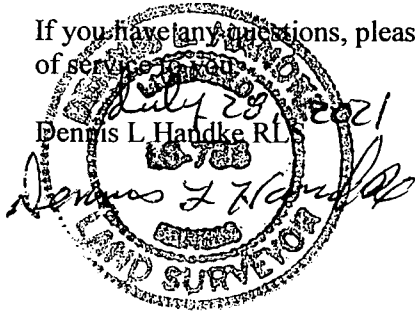
Bench Mark: Square cut on Northeast corner of concrete sign base in the Northwest corner of property.

Elev.:	875.51	North	3218.43	West	4087.46	(from SE Cor. Sec. 25-12-19E)
MW-9	rim	873.02	North	3203.30		NE1/4,SE1/4,SW1/4,NW1/4
	top pipe	872.82	West	3945.56		Lat = 38.98036 Long = 95.25571
MW-10	rim	875.64	North	3283.49		NW1/4,SE1/4,SW1/4,NW1/4
	top pipe	875.22	West	4019.42		Lat = 38.98058 Long = 95.25597

Lat & Long derived from Lawrence West 7.5' quad map. WGS84.

Elevation derived from existing project. NAVD88

If you have any questions, please feel free to call me. Thank you for the opportunity to be of service to you.



NOTE: Figures exhibited within this report are only to be used within the context of this report. Placement of property lines, wells, structures, and roads is based on the available information from county appraiser maps, surveys, site visits, and/or previous vendor reports and should be considered approximate.

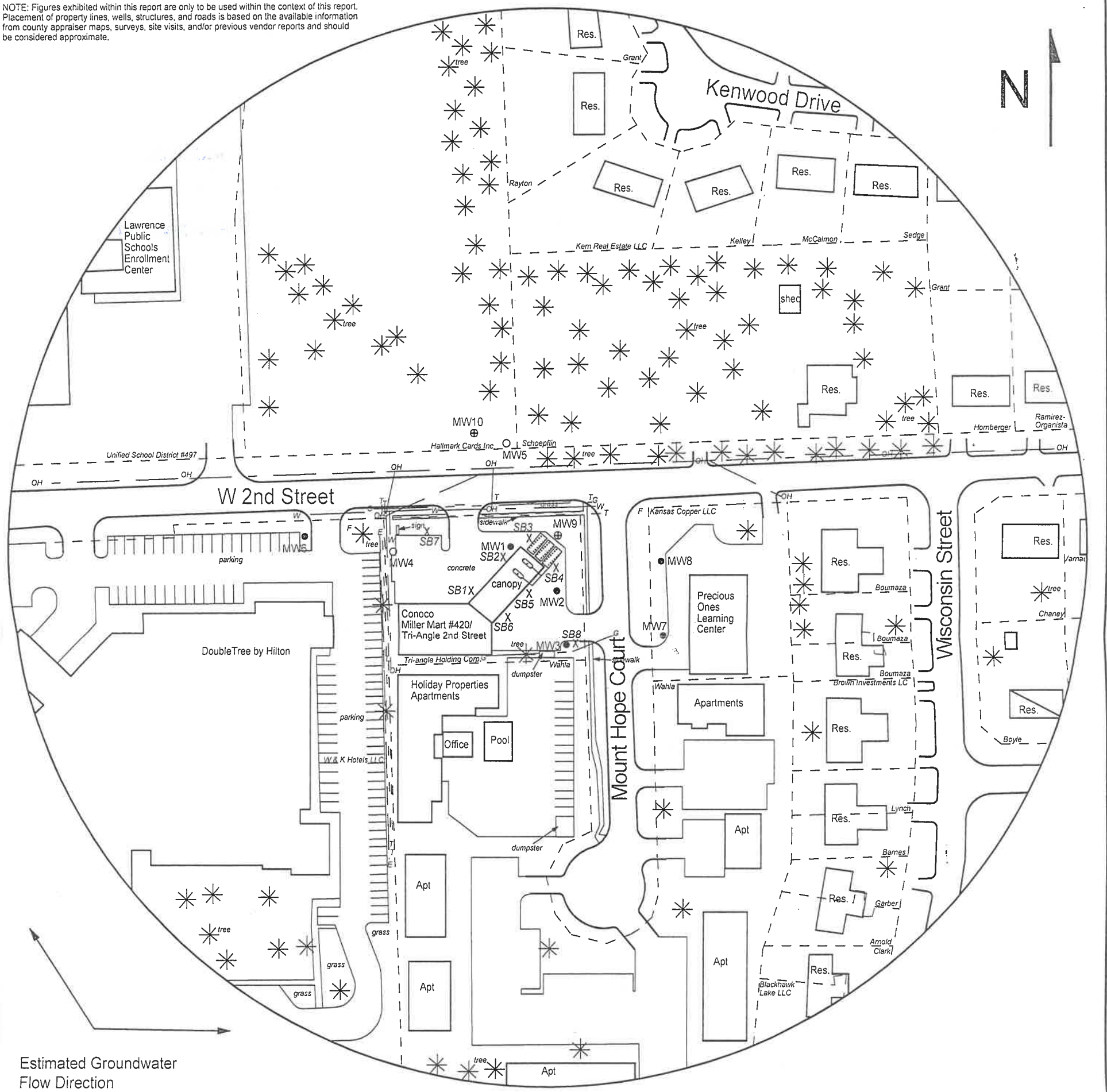


FIGURE 2.2 - 500 FT RADIUS AREA BASE MAP

LEGEND

- Approximate Location of Active UST Basin, Product Lines & Pump Islands
- Building with Basement
- Approximate Location of Property Line
- Existing Monitoring Well
- Monitoring Well (Installed 7/1/21 & 7/6/21)
- Soil Boring (Drilled 6/30/21 & 7/1/21)
- Fire Hydrant
- Electric Lines (2 - 6 ft bgs)
- Gas Lines (1.5 - 3 ft bgs)
- Overhead Lines (25'-40' high)
- Telephone Lines (2 - 6 ft bgs)
- Water Lines (2 - 6 ft bgs)

NOTE: SB7 & SB8 were drilled to collect hydrologic samples.
NOTE: Utility depths, heights and locations are approximate.



PROJECT:
Miller Mart #420/
Tri-Angle 2nd Street
1801 W. 2nd St.
Lawrence, KS
KDHE ID: U4-023-13112/
U4-023-15061
Date: 7/6/21



1311 E 25th St., Suite B 785-841-8707 office
Lawrence, KS 66046 785-865-4282 fax

RECEIVED
SEP 29, 2021
BUREAU OF WATER