

NOTE: Figures exhibited within this report are only to be used within the context of this report. Placement of property lines, wells, structures, and roads is based on the available information from county appraiser maps, surveys, site visits, and/or previous vendor reports and should be considered approximate.

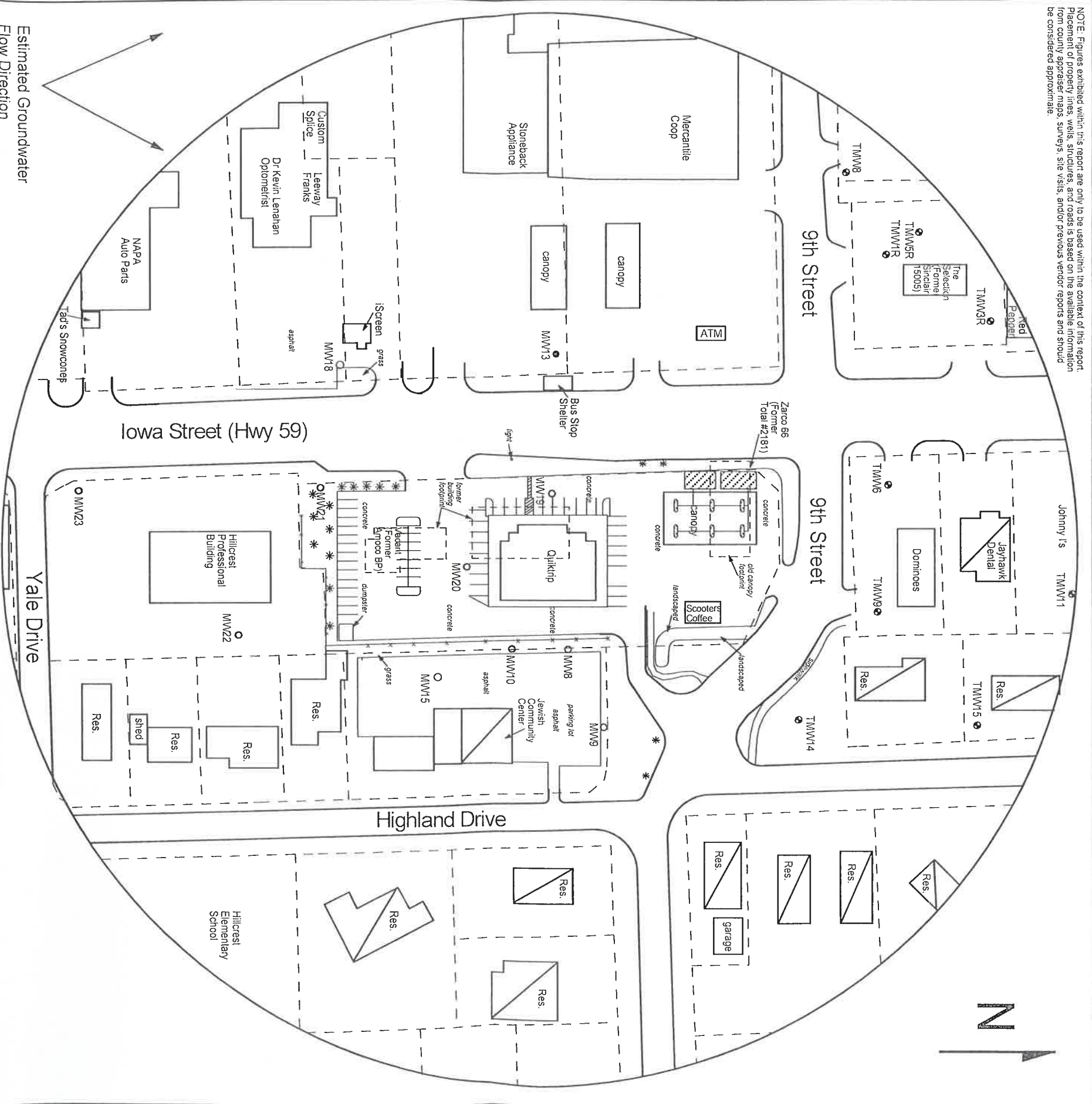


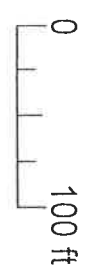
FIGURE 1 - 500 FT RADIUS AREA BASE MAP



1311 E 25th St., Suite B
Lawrence, KS 66046

785-841-8707 office
785-865-4282 fax

PROJECT:
Zarco 66 #3/First Fuel Bank #2
900 Iowa
Lawrence, KS
KDHE ID: U4-023-13174
Date: 4/19/22



- LEGEND**
- Approximate Location of Active UST Basin,
 - Product Lines & Pump Islands
 - Approximate Location of Former UST Basin, Product Lines & Pump Islands
 - Building with Basement
 - Approximate Location of Property Line
 - Existing Monitoring Well
 - Plugged Monitoring Well
 - Monitoring Well at Nearby LUST Sites
 - Total Retail #2181 (U4-023-01573) & Sinclair #15005 (U4-023-10255)

RECEIVED

MAY 02 2022

BUREAU OF WATER