

County: Johnson Fraction: NW NW NE Sec. 34 T. 12 S R. 24 E

CORRECTION(S) to WATER WELL COMPLETION RECORD Form WWC-5 (to rectify lacking or incorrect information)

Owner: Shell Oil Products MW 15

If location corrected, was listed as:

Section-Township-Range: 33-12-24E

Fraction (¼ calls): NW NW NW NE

Location changed to:

34-12-24E

NW NW NE

Other changes: Initial statements: Latitude 38.9710 Longitude -94.7310

Changed to: Latitude 38.970562 Longitude -94.731793

Comments: added elevation 1051.46 and KDHE Project # U4-046-13893

Verification method: Lat/Long & Section corrected using Leoweb & Footages reported on Legal Survey, and Site Map received from KDHE.

Submitted by: Initials: DLS Date: 01/06/2022

Submitted by: ☒ Kansas Geological Survey, Data Resources Library, 1930 Constant Ave., Lawrence, KS 66047-3724
☐ Kansas Dept. of Health & Environment, Bureau of Water, 1000 SW Jackson, Suite 420, Topeka, KS 66612-1367

[illegible]

INSTRUCTIONS: Use typewriter or ball point pen. PLEASE PRESS FIRMLY and PRINT clearly. Please fill in blanks and check the correct answers. Send three copies (white, blue, pink) to Kansas Department of Health and Environment, Bureau of Water, Geology Section, 1000 SW Jackson St., Suite 420, Topeka, Kansas 66612-1367. Telephone 785-296-5522. Send one copy to WATER WELL OWNER and retain one for your records. Include fee of \$5.00 for each constructed well. Visit us at <http://www.kdheks.gov/waterwell/index.html>.

DENNIS L HANDKE

1326 NW GUDEN STREET

TOPEKA, KANSAS 66618

785-286-1990 Fax

785-217-5864 Cell

785-286-4047 Home

Rick Horner

November 2, 2010

URS Corporation

8300 College Blvd., Suite 200

Overland Park, Kansas, 66210

RE: Monitor Well Elevation Survey

8700 Long Street, Lenexa, Kansas

Proj. 10-00AA

U4-046-13893

Shell Station

Bench Mark: Square cut on NE corner of concrete vacuum pad West of building.

Elev: 1052.50

North 5128.00

West 2200.00

(from SE Cor. Sec. 34-12-24)

MW-13	rim	1053.08	North 4975.00	West 2286.00	NE1/4,NW1/4,NW1/4,NE/14
	top pipe	1052.52			Lat = 38-58-13 Long = 94-43-53
MW-14	rim	1035.09	North 5374.00	West 2508.00	SW1/4,SW1/4,SW1/4,SE/14
	top pipe	1034.84			Lat = 38-58-14 Long = 94-43-55
					(Sec. 27-12-24)
MW-15	rim	1051.46	North 5136.00	West 2327.00	NW1/4,NW1/4,NW1/4,NE/14
	top pipe	1051.06			Lat = 38-58-15 Long = 94-43-55
MW-16	rim	1050.89	North 5183.00	West 2337.00	NW1/4,NW1/4,NW1/4,NE/14
	top pipe	1050.19			Lat = 38-58-16 Long = 94-43-56

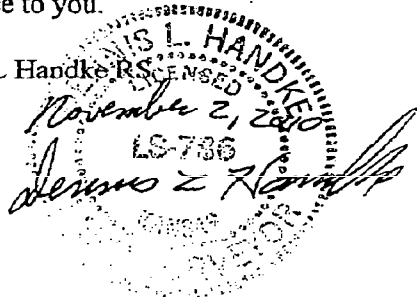
*use footages to calculate
decimal degrees*

*Wells locate incorrectly using above degrees,
Seconds may be a typo, note they equal the
MW #s. Used footages to calculate location
for KGS WWC5 database.
DebS KGS 1/6/2022*

Elevation derived from existing project.

If you have any questions, please feel free to call me. Thank you for the opportunity to be of service to you.

Dennis L Handke



NOTE: Figures exhibited within this report are only to be used within the context of this report. Placement of property lines, wells, structures, and roads is based on the available information from county appraiser maps, surveys, site visits, and/or previous vendor reports and should be considered approximate.

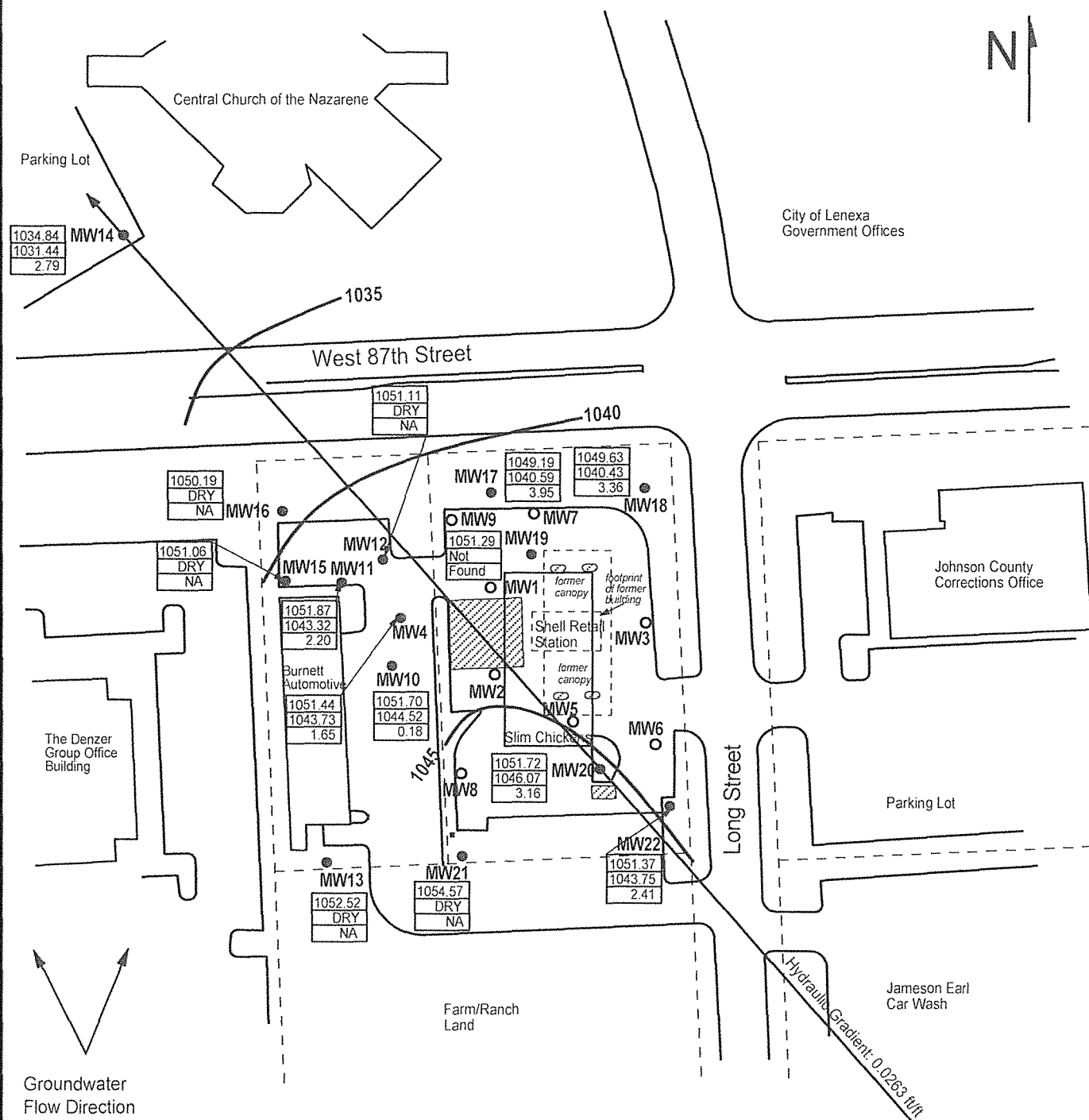


FIGURE 1 - GROUNDWATER FLOW MAP



1311 E 25th St., Suite B (785) 841-8707 office
Lawrence, KS 66046 (785) 865-4282 fax

PROJECT:

Shell Retail Gasoline Station
8700 Long
Lenexa, KS
KDHE ID: U4-046-13893
Date: 7/15/21

0 100 ft

LEGEND:

- Approximate Location of Former UST Basin and Pump Islands
- Approximate Location of Property Lines
- Monitoring Well
- Destroyed Well
- Casing Elevation (AMSL)
Groundwater Elevation (AMSL)
Elevation Change (FT)
- Equipotential Line (AMSL)

NOTE: Benchmark location is unknown.
NOTE: Approximate location of product lines is unknown.