

WATER WELL RECORD

Form WWC-5

Division of Water Resources App. No.

Well ID

MW17

Original Record Correction Change in Well Ust

1 LOCATION OF WATER WELL: Fraction Section Number Township Number Range Number

2 WELL OWNER: Last Name: Business: Station Acquisition, LLC Address: 605 W. 47th St., Suite 200

3 LOCATE WELL WITH "X" IN SECTION BOX: 4 DEPTH OF COMPLETED WELL: 5 Latitude: Longitude: Horizontal Datum: Source for Latitude/Longitude:

7 WELL WATER TO BE USED AS: 1 Domestic: 2 Irrigation: 3 Feedlot: 4 Industrial: 5 Public Water Supply: well ID: 6 Dewatering: how many wells?: 7 Aquifer Recharge: well ID: 8 Monitoring: well ID MW17: 9 Environmental Remediation: well ID: 10 Oil Field Water Supply: lease: 11 Test Hole: well ID: 12 Geothermal: How many bores?:

Was a chemical/bacteriological sample submitted to KDHE? Water well disinfected?

8 TYPE OF CASING USED: TYPE OF SCREEN OR PERFORATION MATERIAL: SCREEN OR PERFORATION OPENINGS ARE: SCREEN-PERFORATED INTERVALS: GRAVEL PACK INTERVALS:

9 GROUT MATERIAL: Grout intervals: From 0.5 ft. to 6.5 ft., From ft. to ft., From ft. to ft.,

Nearest source of possible contamination: Direction from well? Distance from well? ~70 ft

Table with columns: 10 FROM, TO, LITHOLOGIC LOG, FROM, TO, LITHO. LOG (cont.) or PLUGGING INTERVALS

Notes: KDHE ID: Shell Retail Gasoline Station; U4-046-13893 Target of monitoring well is shallow groundwater, <20' of grout was installed at the direction of KDHE.

11 CONTRACTOR'S OR LANDOWNER'S CERTIFICATION: This water well was constructed, reconstructed, or plugged under my jurisdiction and was completed on (mo-day-year) 4/12/17

DENNIS L HANDKE

1820 NW 59th Terrace
TOPEKA, KANSAS 66618
785-286-4047 Home
785-286-1990 Fax

Jess Chapman
Larsen & Associates
1311 E. 25th St., Suite B
Lawrence, Kansas, 66046

May 16, 2017
Revised May 23, 2017

RE: Monitor Well Elevation Survey
8700 Long Street, Lenexa, Kansas

Proj. 17-00P
U4-046-13893
Shell Station

Bench Mark: Square cut on NW corner of concrete power box pad near the Southwest corner of property.
Elev: 1052.50 North 5128.00 West 2200.00 (from SE Cor. Sec. 34-12-24)

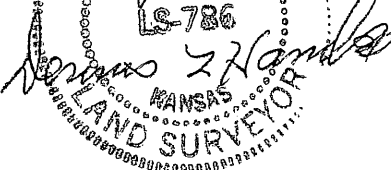
MW-17	rim	1049.46	North	5219	NE1/4,NW1/4,NW1/4,NE/14
	top pipe	1049.19	West	2171	Lat = 38.97085 Long = 94.73128
MW-18	rim	1049.89	North	5216	NE1/4,NW1/4,NW1/4,NE/14
	top pipe	1049.63	West	2100	Lat = 38.97084 Long = 94.73103
MW-19	rim	1051.62	North	5179	NE1/4,NW1/4,NW1/4,NE/14
	top pipe	1051.29	West	2144	Lat = 38.97074 Long = 94.73119
MW-20	rim	1052.05	North	5027	NE1/4,NW1/4,NW1/4,NE/14
	top pipe	1051.72	West	2117	Lat = 38.97032 Long = 94.73109
MW-21	rim	1054.86	North	4976	NE1/4,NW1/4,NW1/4,NE/14
	top pipe	1054.57	West	2196	Lat = 38.97081 Long = 94.73137
MW-22	rim	1051.63	North	4996	NE1/4,NW1/4,NW1/4,NE/14
	top pipe	1051.37	West	2074	Lat = 38.97024 Long = 94.73094

Lat & Long derived from the Shawnee 7.5 minute Quad map, WGS84.

Elevation derived from existing project.

If you have any questions, please feel free to call me. Thank you for the opportunity to be of service to you.

Dennis L Handke RS



RECEIVED
JUN 27 2017
BUREAU OF WATER

NOTE: Figures exhibited within this report are only to be used within the context of this report. Placement of property lines, wells, structures, and roads is based on the available information from county appraiser maps, surveys, site visits, and/or previous vendor reports and should be considered approximate.

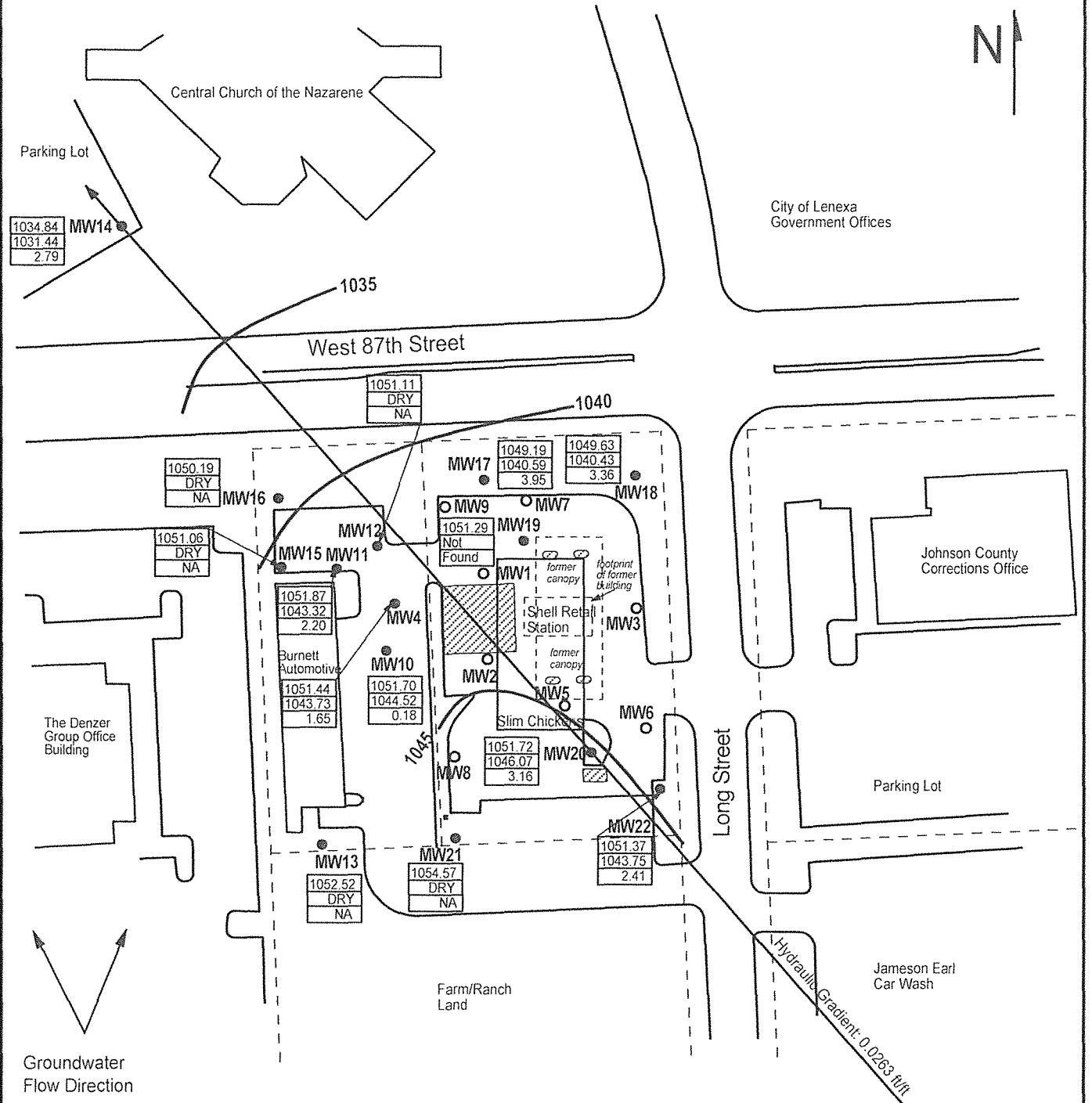


FIGURE 1 - GROUNDWATER FLOW MAP



PROJECT:
 Shell Retail Gasoline Station
 8700 Long
 Lenexa, KS
 KDHE ID: U4-046-13893
 Date: 7/15/21

LEGEND:

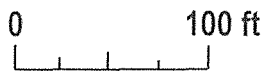
- Approximate Location of Former UST Basin and Pump Islands
- Approximate Location of Property Lines
- Monitoring Well
- Destroyed Well
- | |
|--------|
| 855.66 |
| 845.28 |
| 0.15 |

 Casing Elevation (AMSL)
- | |
|--------|
| 855.66 |
| 845.28 |
| 0.15 |

 Groundwater Elevation (AMSL)
- | |
|--------|
| 855.66 |
| 845.28 |
| 0.15 |

 Elevation Change (FT)
- 845 Equipotential Line (AMSL)

1311 E 25th St., Suite B (785) 841-8707 office
 Lawrence, KS 66046 (785) 865-4282 fax



NOTE: Benchmark location is unknown.
 NOTE: Approximate location of product lines is unknown.