

WATER WELL RECORD

Form WWC-5

Division of Water Resources App. No.

Well ID

MW17

[X] Original Record [ ] Correction [ ] Change in Well Ust

1 LOCATION OF WATER WELL: County Johnson Fraction SW 1/4 SW 1/4 SW 1/4 Section Number 32 Township Number T 12 S R 25 [X] E [ ] W

2 WELL OWNER: Last Name: First: Street or Rural Address where well is located (if unknown, distance and direction from nearest town or intersection): 9475 Metcalf Ave, Overland Park, KS

3 LOCATE WELL WITH "X" IN SECTION BOX: [Diagram showing a 3x3 grid with 'X' in the SW corner] 4 DEPTH OF COMPLETED WELL: 30 ft

7 WELL WATER TO BE USED AS: 1 Domestic: [ ] Household [ ] Lawn & Garden [ ] Livestock [ ] Irrigation [ ] Feedlot [ ] Industrial

8 TYPE OF CASING USED: [ ] Steel [X] PVC [ ] Other CASING JOINTS: [ ] Glued [ ] Clamped [ ] Welded [X] Threaded

9 GROUT MATERIAL: [ ] Neat cement [ ] Cement grout [X] Bentonite [X] Other Concrete: 0-0.5' Grout intervals: From 0.5 ft. to 13 ft.

Table with 6 columns: FROM, TO, LITHOLOGIC LOG, FROM, TO, LITHO. LOG (cont.) or PLUGGING INTERVALS. Rows describe soil layers from 0 to 30 feet depth.

11 CONTRACTOR'S OR LANDOWNER'S CERTIFICATION: This water well was [X] constructed, [ ] reconstructed, or [ ] plugged under my jurisdiction and was completed on (mo-day-year) 9/16/21

NOTE: Figures exhibited within this report are only to be used within the context of this report. Placement of property lines, wells, structures, and roads is based on the available information from county appraiser maps, surveys, site visits, and/or previous vendor reports and should be considered approximate.

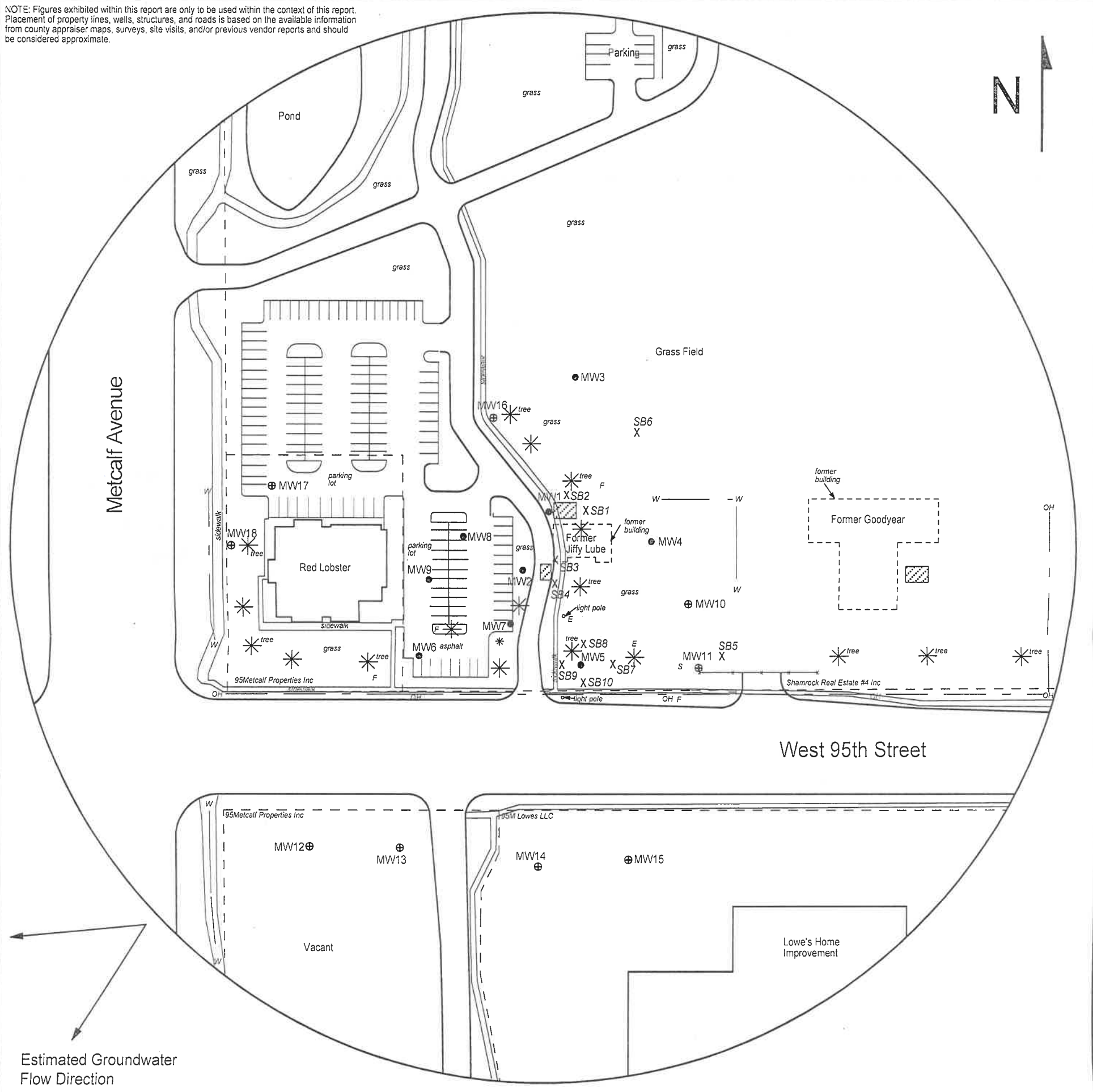


FIGURE 2.2 - 500 FT RADIUS AREA BASE MAP

LEGEND

- Approximate Location of Former UST Basin
  - Approximate Location of Property Line
  - Existing Monitoring Well
  - Monitoring Well (Installed 9/14/21, 9/16/21, 9/20-21/21)
  - Soil Boring (Drilled 9/21/21)
  - Electric Meter
  - Fire Hydrant
  - Sewer Inlet
  - Overhead Lines (25'-40' high)
  - Water Lines (2 - 6 ft bgs)
- NOTE: Utility depths, heights and locations are approximate.  
 NOTE: SB1 - SB6 were drilled on 11/5-6/20.  
 NOTE: SB7 - SB10 were drilled on 9/21/21.



**PROJECT:**  
 Jiffy Lube  
 7000 W 95th St  
 Overland Park, KS  
 KDHE ID: U4-046-12211  
 Date: 10/25/21



1311 E 25th St., Suite B 785-841-8707 office  
 Lawrence, KS 66046 785-865-4282 fax

# DENNIS L HANDKE

1820 NW 59th Terrace  
TOPEKA, KANSAS 66618  
785-286-4047 Home

Jess Chapman  
Larsen & Associates  
1311 E. 25<sup>th</sup> Street, Suite B  
Lawrence, Kansas, 66046

November 1, 2021

RE: Monitor Well Elevation Survey  
7000 W. 95<sup>th</sup> St., Overland Park, Kansas

Proj. 21-00II  
Jiffy Lube  
U4-046-12211

Bench Mark: Square cut on North center of concrete street light base near Southwest corner of property.  
Elev: 964.21      North 81.06      West 4879.16      (from SE Cor. Sec. 32-12-25E)

MW-10	rim	969.62	North	114.28	SE1/4,SW1/4,SW1/4,SW1/4
	top pipe	969.25	West	4767.50	Lat= 38.95710 Long = 94.66580
MW-11	rim	968.26	North	51.30	SE1/4,SW1/4,SW1/4,SW1/4
	top pipe	967.90	West	4762.21	Lat= 38.95692 Long = 94.66578
MW-12	rim	951.48	South	113.80	NW1/4,NW1/4,NW1/4,NW1/4 (Sec. 5-13-25E)
	top pipe	951.13	West	5123.95	Lat= 38.95647 Long = 94.66705
MW-13	rim	954.07	South	115.40	NW1/4,NW1/4,NW1/4,NW1/4 (Sec. 5-13-25E)
	top pipe	953.76	West	5041.05	Lat= 38.95647 Long = 94.66676
MW-14	rim	946.05	South	133.17	NE1/4,NW1/4,NW1/4,NW1/4 (Sec. 5-13-25E)
	top pipe	945.62	West	4911.93	Lat= 38.95642 Long = 94.6631
MW-15	rim	944.91	South	127.44	NE1/4,NW1/4,NW1/4,NW1/4 (Sec. 5-13-25E)
	top pipe	944.52	West	4824.81	Lat= 38.95643 Long = 94.96600
MW-16	rim	967.71	North	290.13	SE1/4,SW1/4,SW1/4,SW1/4
	top pipe	967.39	West	4953.52	Lat= 38.95758 Long = 94.96645
MW-17	rim	957.75	North	224.81	SW1/4,SW1/4,SW1/4,SW1/4
	top pipe	957.50	West	5160.10	Lat= 38.95740 Long = 94.96718
MW-18	rim	949.08	North	169.16	SW1/4,SW1/4,SW1/4,SW1/4
	top pipe	948.77	West	5197.25	Lat= 38.95725 Long = 94.66731

Lat & Long derived from Lenexa 7.5 quad map. WGS84.

Elevation established from existing project. NAVD 88

If you have any questions, please feel free to call me. Thank you for the opportunity to be of service to you.

