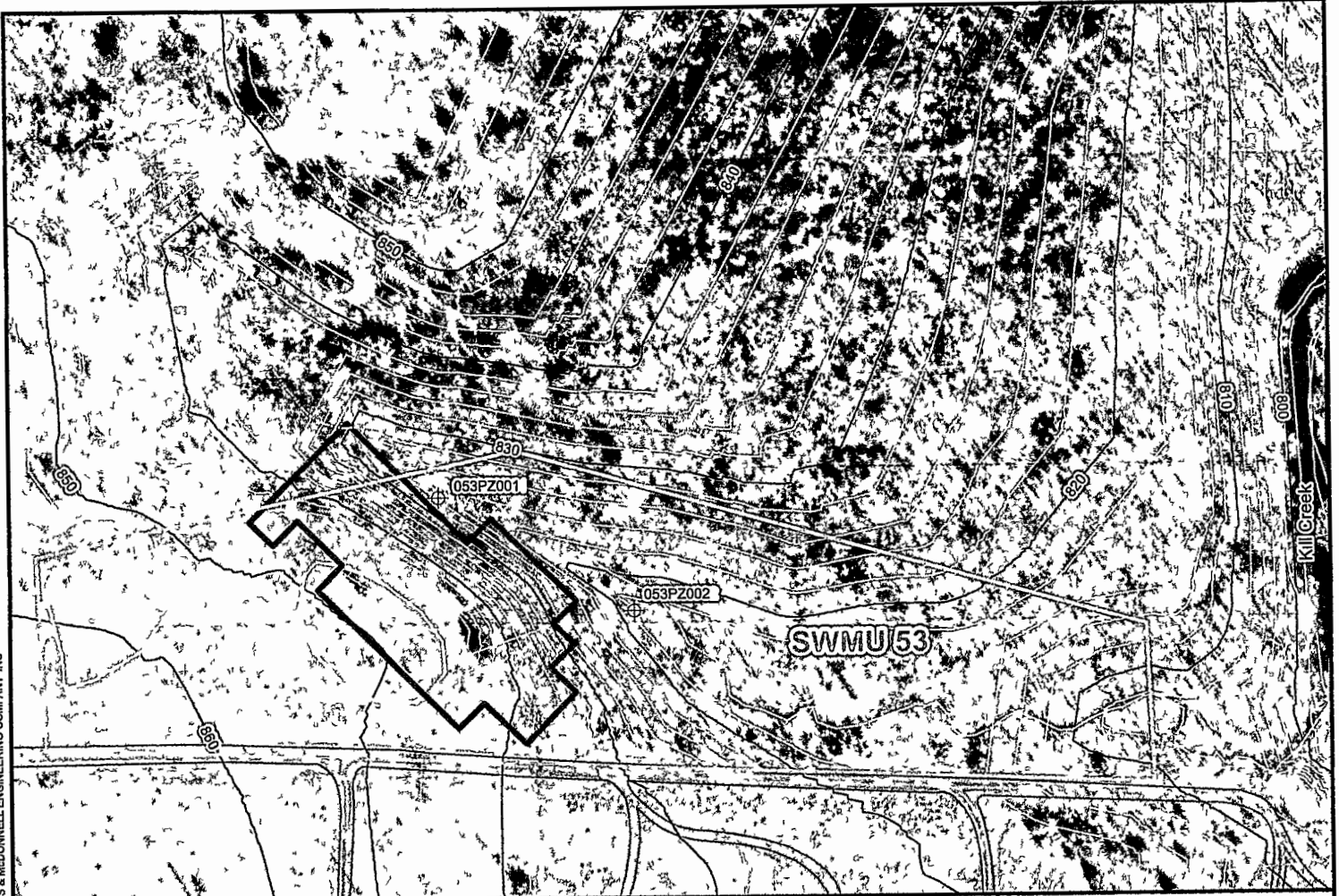


Path: Z:\Clients\ENUS\COB119849_SFAAP\2019RFI\Study\GIS\MapData\SWMU 53\Figure 3 - SWMU53_Monitoring Well Locations.mxd
 COPYRIGHT © 2015 BURNS & McDONNELL ENGINEERING COMPANY, INC



Legend

- Proposed Piezometer
- Inferred Groundwater Flow
- SWMU Boundary
- Intermittent Creek
- Approximate Location of Construction Debris Disposal Area
- Approximate Location of Burn Areas
- Road
- Stream

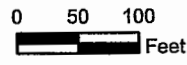


Figure 3

Proposed Temporary Piezometer Location Map
Supplemental RFI Work Plan
SWMU 53
 Former Sunflower Army Ammunition Plant
 De Soto, Kansas

Source: FSRI and Burns & McDonnell Engineering

Issued January 19, 2021