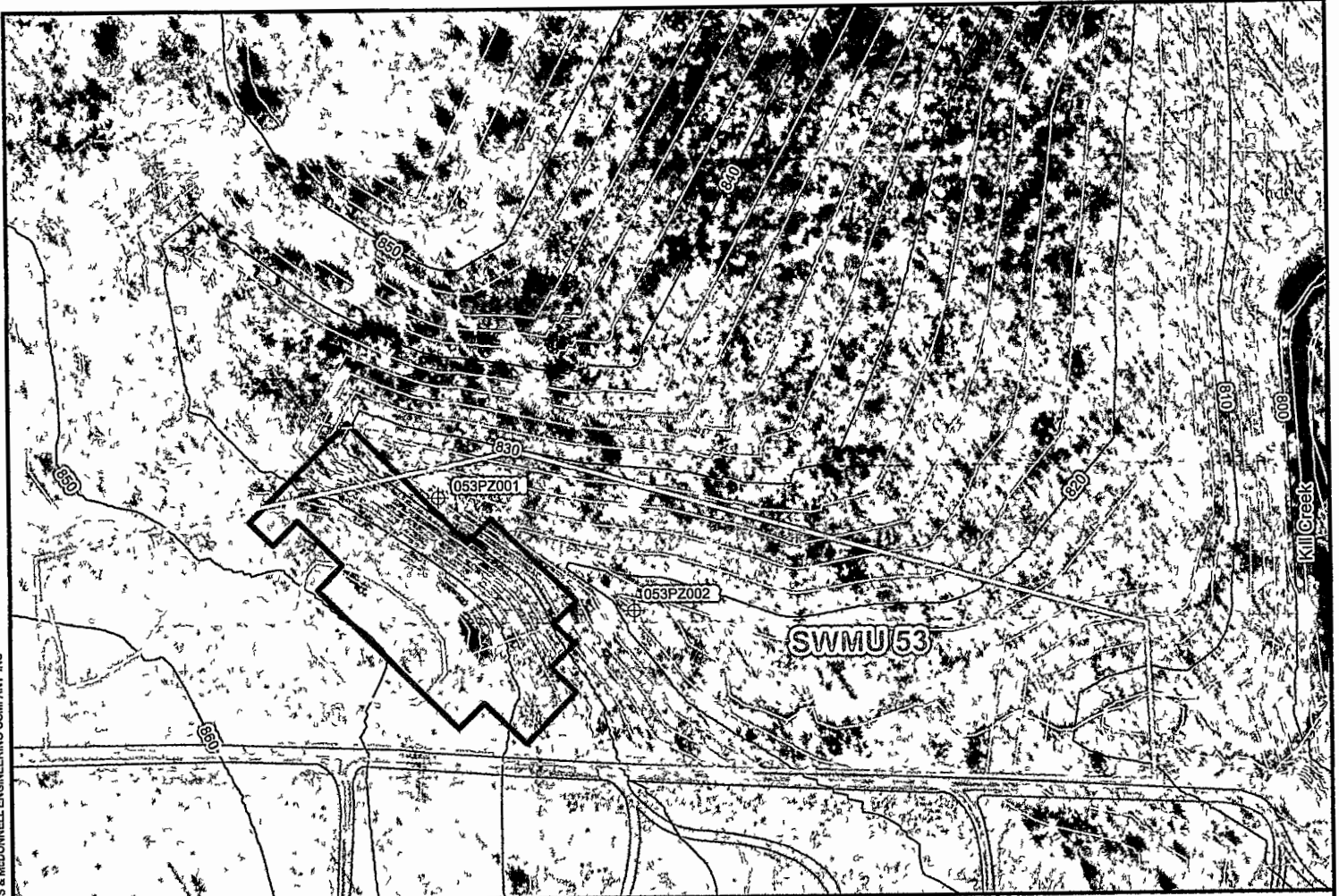



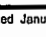


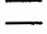



Path: Z:\Clients\ENUS\COB119849_SFAAP\2019RFI\Studies\Geospatial\Data\Files\ArcDoc\SWMU 53\Figure 3 - SWMU53_Monitoring Well Locations.mxd
 COPYRIGHT © 2015 BURNS & McDONNELL ENGINEERING COMPANY, INC



Legend

-  Proposed Piezometer
-  Inferred Groundwater Flow
-  SWMU Boundary
-  Intermittent Creek
-  Approximate Location of Construction Debris Disposal Area
-  Approximate Location of Burn Areas
-  Road
-  Stream

0 50 100
 Feet



Source: FSRI and Burns & McDonnell Engineering

Figure 3

Proposed Temporary Piezometer Location Map
Supplemental RFI Work Plan
SWMU 53
 Former Sunflower Army Ammunition Plant
 De Soto, Kansas

Issued January 19, 2021