

WATER WELL RECORD

Form WWC-5

Division of Water Resources App. No.

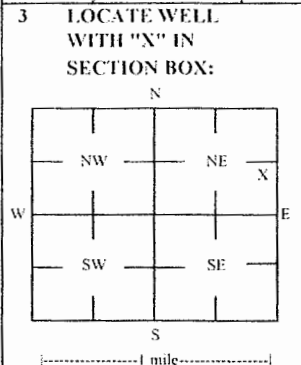
Well ID

NMW14

Original Record [] Correction [X] Change in Well List []

1 LOCATION OF WATER WELL: County Shawnee Fraction NW 1/4 NE 1/4 SE 1/4 NE 1/4 Section Number 36 Township Number T 12 S Range Number R 15 E W

2 WELL OWNER: Last Name: Business: Lindemuth, Inc. Address: 125 SW Gage Blvd City: Topeka State: KS ZIP: 66606 Street or Rural Address where well is located (if unknown, distance and direction from nearest town or intersection): 416 SW 57th St. Topeka, KS 66609



4 DEPTH OF COMPLETED WELL: 9 ft. Depth(s) Groundwater Encountered: 1) 9 ft. 2) 0 ft. 3) 0 ft. or 4) Dry Well. WELL'S STATIC WATER LEVEL: 1.57 ft. [X] below land surface, measured on (mo-day-yr) 4/9/19

5 Latitude: 38.96750 (decimal degrees) Longitude: 95.68901 (decimal degrees) Horizontal Datum: [X] WGS 84 [] NAD 83 [] NAD 27 Source for Latitude/Longitude: [] GPS (unit make/model:) (WAAS enabled? [] Yes [] No) [X] Land Survey [] Topographic Map [] Online Mapper

6 Elevation 1019.48 ft [] Ground Level [X] TOC Source: [X] Land Survey [] GPS [] Topographic Map [] Other

7 WELL WATER TO BE USED AS: 1 Domestic: [] Household [] Lawn & Garden [] Livestock [] Irrigation [] Feedlot [] Industrial 5 Public Water Supply: well ID 6 Dewatering: how many wells? 7 Aquifer Recharge: well ID 8 [X] Monitoring: well ID NMW14 9 Environmental Remediation: well ID [] Air Sparge [] Soil Vapor Extractor [] Recovery [] Injection 10 Oil Field Water Supply: lease 11 Test Hole: well ID [] Cased [] Uncased [] Geotechnical 12 Geothermal: How many bores? a) Closed Loop [] Horizontal [] Vertical b) Open Loop [] Surface Discharge [] Inj. of Water [] Other (specify):

Was a chemical/bacteriological sample submitted to KDHE? [] Yes [X] No If yes, date sample was submitted: Water well disinfected? [] Yes [X] No

8 TYPE OF CASING USED: [] Steel [X] PVC [] Other CASING JOINTS: [] Glued [] Clamped [] Welded [X] Threaded Casing diameter 2 in. to 4 in. Diameter in. to ft. Casing height above land surface -0.46 in. Weight lbs./ft. Well thickness or gauge No TYPE OF SCREEN OR PERFORATION MATERIAL: [] Steel [] Stainless Steel [] Fiberglass [X] PVC [] Other (Specify) SCREEN OR PERFORATION OPENINGS ARE: [] Continuous Slot [X] Mill Slot [] Gauze Wrapped [] Torch Cut [] Drilled Holes [] Other (Specify) [] Louvered Shutter [] Key Punched [] Wire Wrapped [] Saw Cut [] None (Open Hole) SCREEN-PERFORATED INTERVALS: From 4 ft. to 9 ft. GRAVEL PACK INTERVALS: From 2 ft. to 9 ft.

9 GROUT MATERIAL: [] Neat cement [] Cement grout [X] Bentonite [X] Other Concrete: 0-0.7' Grout intervals: From 0.7 ft. to 2 ft. From ft. to ft. From ft. to ft.

Nearest source of possible contamination: [] Septic Tank [] Lateral Lines [] Pit Privy [] Livestock Pens [] Insecticide Storage [] Sewer Lines [] Cess Pool [] Sewage Lagoon [X] Fuel Storage [] Abandoned Water Well [] Watertight Sewer Lines [] Seepage Pit [] Feedyard [] Fertilizer Storage [] Oil Well / Gas Well [] Other (Specify):

Direction from well? S-SE Distance from well? ~210 ft

Table with 6 columns: FROM, TO, LITHOLOGIC LOG, FROM, TO, LITHO. LOG (cont.) or PLUGGING INTERVALS. Rows include Topsoil, Silty clay, Limestone, and Weathered mudstone/shale.

Notes: KDHE ID: Pauline Farm Store: C408971586 Target of monitoring well is shallow groundwater, <20' of grout was installed at the direction of KDHE.

11 CONTRACTOR'S OR LANDOWNER'S CERTIFICATION: This water well was [X] constructed, [] reconstructed or [] plugged under my jurisdiction and was completed on (mo-day-year) 2/20/19 and this record is true to the best of my knowledge and belief. Kansas Water Well Contractor's License No 757 This Water Well Record was completed on (mo-day-year) 6/24/19 under the business name of Larsen & Associates, Inc. Signature

Mail 1 white copy along with a fee of \$5.00 for each constructed well to: Kansas Department of Health and Environment, Bureau of Water, 1000 SW Jackson St., Suite 420, Topeka, Kansas 66612-1367. Mail one to Water Well Owner and retain one for your records. Telephone 785-296-5524.

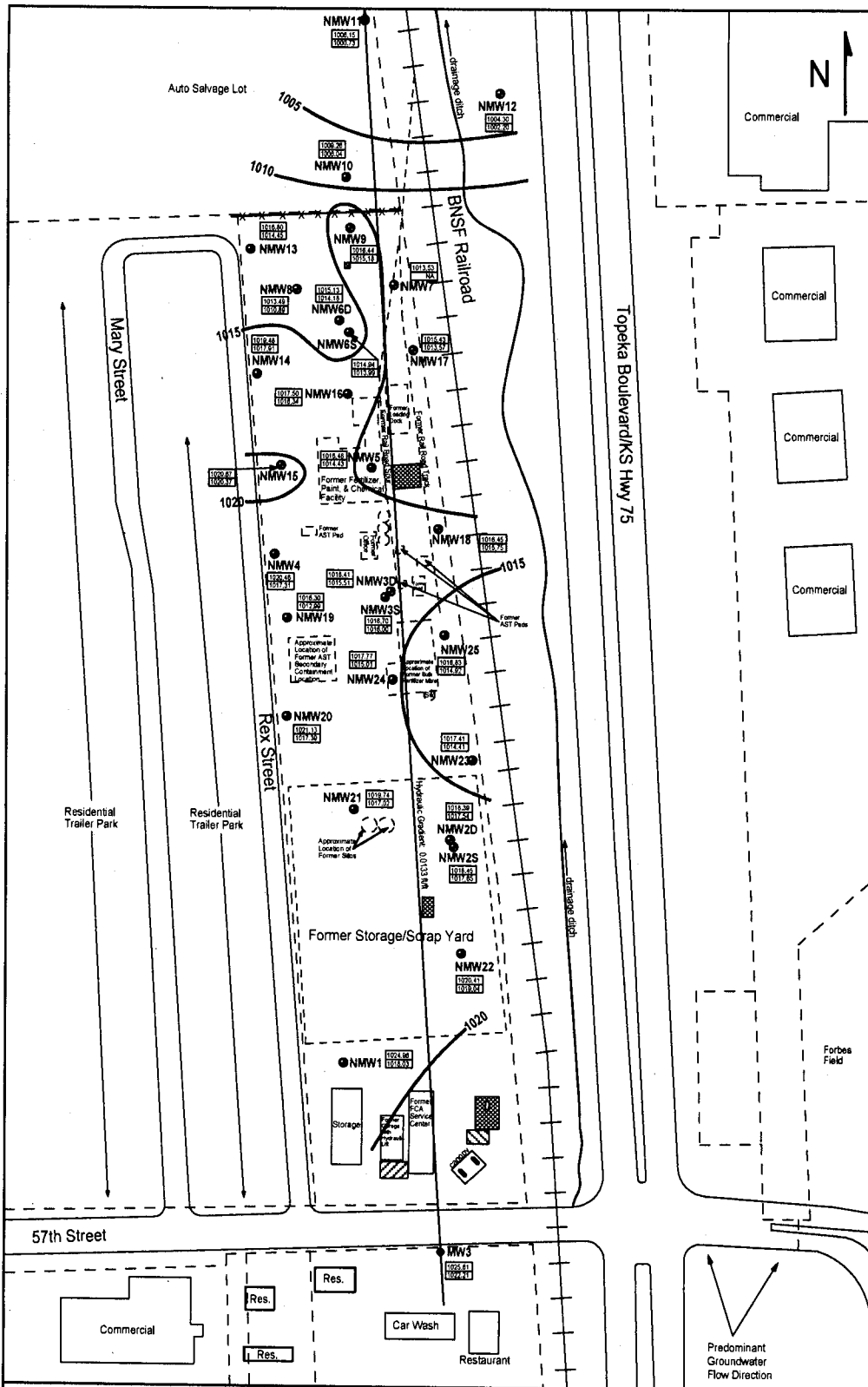
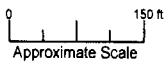


FIGURE 2 - GROUNDWATER FLOW MAP FOR THE 2019 PHASE II AND PHASE III ADDENDUM

- LEGEND:**
- Approximate Location of Former UST Basin and Pump Island
 - Approximate Location of Inactive UST Basin and Pump Islands
 - Approximate Location of Former ASTs
 - Monitoring Well
 - Monitoring Well: KDHE TF Site
 - Pauline Farmers Coop South (U4-089-10005)
 - Casing Elevation (AMSL)
 - Groundwater Elevation (AMSL)
 - Equipotential Line (AMSL)

PROJECT:
 Pauline Farm Store
 416 SW 57th Street
 Topeka, KS
 KDHE ID: C408971586
 DATE: 4/9/19



1311 E 25th St, Suite B (785) 841-8707 office
 Lawrence, KS 66046 (785) 865-4282 fax

NOTE: NMW19 is anomalous, therefore the data was not used to determine groundwater flow.

DENNIS L HANDKE

1820 NW 59th Terrace
TOPEKA, KANSAS 66618
785-286-4047 Home
785-286-1990 Fax

Jess Chapman
Larsen & Associates
1311 E. 25th Street, Suite B
Lawrence, Kansas, 66046

March 20, 2019

RE: Monitor Well Elevation Survey
416 W. 57h St., Topeka, Kansas

Proj. 19-00K
Pauline Farm Store
C408971586

Bench Mark: Square cut on East corner of SW concrete pump island near South edge of property.
Elev: 1024.81 North 2711.77 West 137.40 (from SE Cor. Sec. 36-12-15E)

NMW-13	rim	1017.22	North	3932.71	NW1/4,NE1/4,SE1/4,NE1/4
	top pipe	1016.80	West	382.15	Lat= 38.96787 Long = 95.68904
NMW-14	rim	1019.94	North	3801.94	NW1/4,NE1/4,SE1/4,NE1/4
	top pipe	1019.48	West	374.97	Lat= 38.96750 Long = 95.68901
NMW-15	rim	1021.18	North	3679.58	NE1/4,NE1/4,SE1/4,NE1/4
	top pipe	1020.67	West	331.35	Lat= 38.96676 Long = 95.68900
NMW-16	rim	1017.81	North	3784.66	NE1/4,NE1/4,SE1/4,NE1/4
	top pipe	1017.50	West	263.17	Lat= 38.96745 Long = 95.68862
NMW-17	rim	1015.89	North	3801.01	NE1/4,NE1/4,SE1/4,NE1/4
	top pipe	1015.43	West	209.77	Lat= 38.96750 Long = 95.68843
NMW-18	rim	1016.73	North	3558.58	SE1/4,NE1/4,SE1/4,NE1/4
	top pipe	1016.45	West	183.79	Lat= 38.96683 Long = 95.68834
NMW-19	rim	1016.76	North	3451.91	SW1/4,NE1/4,SE1/4,NE1/4
	top pipe	1016.30	West	358.95	Lat= 38.96654 Long = 95.68896
NMW-20	rim	1021.41	North	3317.00	SW1/4,NE1/4,SE1/4,NE1/4
	top pipe	1021.13	West	357.20	Lat= 38.96617 Long = 95.68895
NMW-21	rim	1020.25	North	3258.89	NE1/4,SE1/4,SE1/4,NE1/4
	top pipe	1019.74	West	289.93	Lat= 38.96601 Long = 95.68872
NMW-22	rim	1020.67	North	3061.96	NE1/4,SE1/4,SE1/4,NE1/4
	top pipe	1020.41	West	134.45	Lat= 38.96547 Long = 95.68817
NMW-23	rim	1017.72	North	3280.96	NE1/4,SE1/4,SE1/4,NE1/4
	top pipe	1017.41	West	145.67	Lat= 38.96607 Long = 95.68821
NMW-24	rim	1017.98	North	3365.35	SE1/4,NE1/4,SE1/4,NE1/4
	top pipe	1017.77	West	249.50	Lat= 38.96630 Long = 95.68857
NMW-25	rim	1017.11	North	3423.97	SE1/4,NE1/4,SE1/4,NE1/4
	top pipe	1016.83	West	180.02	Lat= 38.96646 Long = 95.68833