

County: Miami Fraction SE SW SW NE Sec. 17 T 17 S R 23 EW

CORRECTION(S) TO WATER WELL COMPLETION RECORD (WWC-5)
(to rectify lacking or incorrect information)

Owner: Beachner Grain, Inc.

Location was listed as:

Location changed to:

Section-Township-Range: None Given

17-17S-23E

Fraction (1/4 1/4 1/4): _____

SE SW SW NE

Other changes: Initial statements: _____

Changed to: _____

Comments: _____

Verification method: Latitude & longitude, KGS' "LEO" conversion tool,
written description & city street map, and mapping tool
on KGS website. initials: ARL date: 11/4/2013

Submitted by: Kansas Geological Survey, Data Resources Library, 1930 Constant Ave., Lawrence, KS 66047-3726
to: Kansas Dept of Health & Environment, Bureau of Water, 1000 SW Jackson, Suite 420, Topeka, KS 66612-1367.



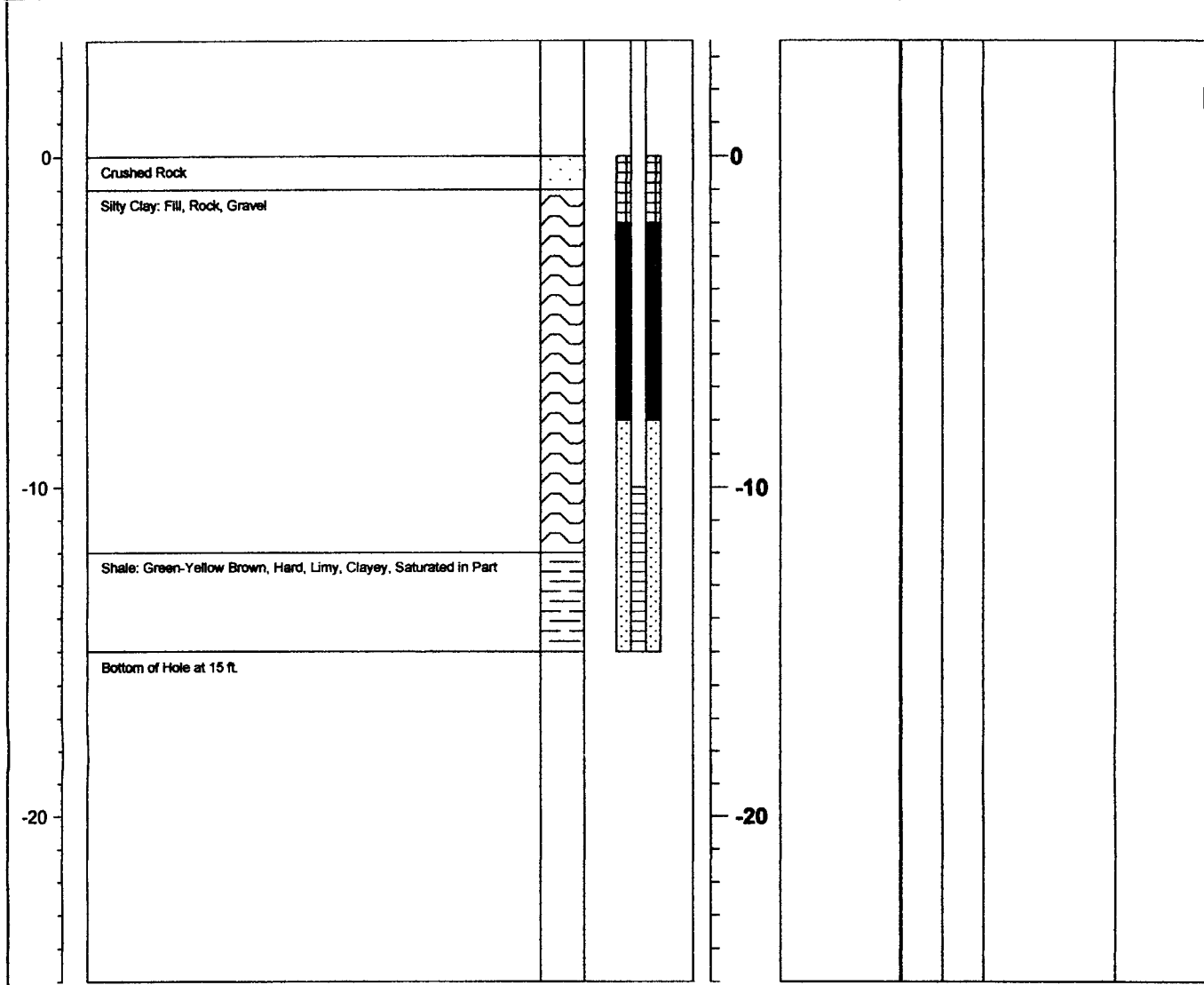
Well MW-2

Wichita, KS
316-262-5698

Project: Former Miami County Coop
Client: Beachner Grain
Location: Paola, KS
Project No.: 13054:5066

Geologist: Don Breit
Date Started: 6/20/2013
Date Completed: 6/20/2013
Ground Surface Elevation

Elevation	LITHOLOGIC DESCRIPTION	Graphic Log	Well Detail	Depth (ft)	Sample			Tests	
					Number	Type	Recovery (%)	PID Reading	Sent to lab



The geologic contacts shown hereon are approximate, in-situ conditions may be different. Elevations are in K-State Datum.

Water Level Observations		Well Construction Details				Drilling Company: PSA Environmental
Installed Well Depth	15 ft	(BGS)	SAND	SEAL	SCREEN	Driller:
SWL	12 ft	TOP	8 ft	2 ft	10 ft	Drilling Rig Type: 6-inch augers
Instrument:		BOTTOM	15 ft	8 ft	10 ft	Comments:
Date Measured:	6/20/2013	SIZE	20/40	3/8 Chip	.010"	
Borehole Dia.	6 in	TYPE	Quartz	Bentonite	PVC	