

WATER WELL RECORD

Form WWC-5

Division of Water Resources App. No.

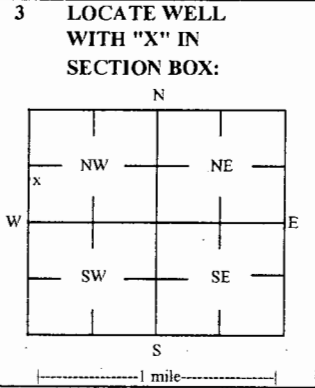
Well ID

MW2

Original Record Correction Change in Well Use

1 LOCATION OF WATER WELL: County Miami Fraction NW 1/4 NW 1/4 SW 1/4 NW 1/4 Section Number 12 Township Number T 18 S Range Number R 22 E W

2 WELL OWNER: Last Name: First: Street or Rural Address where well is located (if unknown, distance and direction from nearest town or intersection): If at owner's address, check here: 503 E Main, Osawatomie, KS



4 DEPTH OF COMPLETED WELL: 25 ft Depth(s) Groundwater Encountered: 1) 25 ft 2) ft 3) ft, or 4) Dry Well WELL'S STATIC WATER LEVEL: 17.07 ft

5 Latitude: 38.49987 (decimal degrees) Longitude: 94.93652 (decimal degrees) Horizontal Datum: X WGS 84 NAD 83 NAD 27 Source for Latitude/Longitude: X GPS (unit make/model: ) (WAAS enabled? Yes No) X Land Survey Topographic Map Online Mapper

6 Elevation: 860.92 ft Ground Level X TOC Source: X Land Survey GPS Topographic Map Other

7 WELL WATER TO BE USED AS: 1 Domestic: Household Lawn & Garden Livestock Irrigation Feedlot Industrial 2-4 5 Public Water Supply: well ID 6 Dewatering: how many wells? 7 Aquifer Recharge: well ID 8 X Monitoring: well ID MW2 9 Environmental Remediation: well ID Air Sparge Soil Vapor Extractor Recovery Injection 10 Oil Field Water Supply: lease 11 Test Hole: well ID Cased Uncased Geotechnical 12 Geothermal: How many bores? a) Closed Loop Horizontal Vertical b) Open Loop Surface Discharge Inj. of Water Other (specify):

Was a chemical/bacteriological sample submitted to KDHE? Yes No X No If yes, date sample was submitted: Water well disinfected? Yes No X No

8 TYPE OF CASING USED: Steel PVC Other CASING JOINTS: Glued Clamped Welded X Threaded Casing diameter 2 in. to 15 ft. Diameter in. to ft. Diameter in. to ft. Casing height above land surface -0.39 in. Weight lbs./ft. Well thickness or gauge No TYPE OF SCREEN OR PERFORATION MATERIAL: Steel Stainless Steel Fiberglass X PVC Brass Galvanized Steel Concrete tile None used (open hole) SCREEN OR PERFORATION OPENINGS ARE: Continuous Slot X Mill Slot Gauze Wrapped Torch Cut Drilled Holes Other (Specify) Louvered Shutter Key Punched Wire Wrapped Saw Cut None (Open Hole) SCREEN-PERFORATED INTERVALS: From 15 ft. to 25 ft. From ft. to ft. From ft. to ft. GRAVEL PACK INTERVALS: From 13 ft. to 25 ft. From ft. to ft. From ft. to ft.

9 GROUT MATERIAL: Neat cement Cement grout X Bentonite X Other Concrete: 0-0.5' Grout intervals: From 0.5 ft. to 13 ft. From ft. to ft. From ft. to ft.

Nearest source of possible contamination: Septic Tank Lateral Lines Pit Privy Livestock Pens Insecticide Storage Sewer Lines Cess Pool Sewage Lagoon X Fuel Storage Abandoned Water Well Watertight Sewer Lines Seepage Pit Feedyard Fertilizer Storage Oil Well / Gas Well Other (Specify): Direction from well? S Distance from well? ~5 ft

Table with 6 columns: FROM, TO, LITHOLOGIC LOG, FROM, TO, LITHO. LOG (cont.) or PLUGGING INTERVALS. Rows show depth intervals and lithology: 0-0.5 Concrete, 0.5-3.5 Fill gravel, 3.5-13 Silty clay grading to clayey silt w/ fine sand, 13-25 Clayey silt w/ fine sand.

Notes: KDHE ID: Casey's #3560; U4-061-14982 Target of monitoring well is shallow groundwater. <20' of grout was installed at the direction of KDHE.

11 CONTRACTOR'S OR LANDOWNER'S CERTIFICATION: This water well was X constructed, reconstructed, or plugged under my jurisdiction and was completed on (mo-day-year) 3/15/18 and this record is true to the best of my knowledge and belief. Kansas Water Well Contractor's License No 757 This Water Well Record was completed on (mo-day-year) 4/4/18 under the business name of Larsen & Associates, Inc. Signature

**DENNIS L HANDKE**

1820 NW 59th Terrace  
 TOPEKA, KANSAS 66618  
 785-286-4047 Home  
 785-286-1990 Fax

Jessica Chapman  
 Larsen & Associates  
 1311 E. 25<sup>th</sup> Street, Suite B  
 Lawrence, Kansas, 66046

April 2, 2018,

RE: Monitor Well Elevation Survey  
 503 E. Main, Osawatomie, Kansas

Proj. 18-00H  
 Casey's #3560  
 U4-061-14982

Bench Mark Square cut on Southwest corner of concrete sign base near NW corner of property.  
 Elev: 859.07 North 3306 West 5298 (from SE Cor. Sec. 12-18-22E)

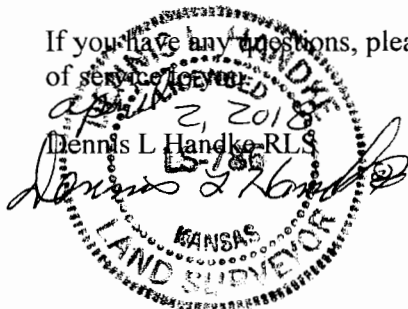
MW-1	rim	860.51	North	3253	NW1/4,NW1/4,SW1/4,NW1/4
	top pipe	860.25	West	5171	Lat= 38.49981 Long = 94.93635
MW-2	rim	861.31	North	3274	NW1/4,NW1/4,SW1/4,NW1/4
	top pipe	860.92	West	5220	Lat= 38.49987 Long = 94.93652
MW3	rim	859.84	North	3306	NW1/4,NW1/4,SW1/4,NW1/4
	top pipe	859.43	West	5272	Lat= 38.49996 Long = 94.93560
MW-4	rim	859.39	North	3262	NW1/4,NW1/4,SW1/4,NW1/4
	top pipe	859.14	West	5309	Lat= 38.49984 Long = 94.93683
MW-5	rim	861.03	North	3138	NW1/4,NW1/4,SW1/4,NW1/4
	top pipe	860.66	West	5292	Lat= 38.49950 Long = 94.93678
MW-6	rim	856.63	North	3158	NW1/4,NW1/4,SW1/4,NW1/4
	top pipe	856.30	West	5131	Lat= 38.49955 Long = 94.93521
MW-7	rim	861.93	North	3014	SW1/4,NW1/4,SW1/4,NW1/4
	top pipe	861.60	West	5270	Lat= 38.49915 Long = 94.93670
MW-8	rim	855.24	North	3305	NW1/4,NW1/4,SW1/4,NW1/4
	top pipe	854.98	West	5135	Lat= 38.49995 Long = 94.93622
MW-9	rim	855.31	North	3260	NW1/4,NW1/4,SW1/4,NW1/4
	top pipe	854.97	West	4995	Lat= 38.49982 Long = 94.93573

Lat & Long derived existing Osawatomie 7.5' quad map. WGS 84.

Elevation established from USGS BM P 221, NAVD 88.

If you have any questions, please feel free to call me. Thank you for the opportunity to be of service to you.

Dennis L Handke RLS



Miami  
12-18-22E

NOTE: Figures exhibited within this report are only to be used within the context of this report. Placement of property lines, wells, structures, and roads is based on the available information from county appraiser maps, surveys, site visits, and/or previous vendor reports and should be considered approximate.

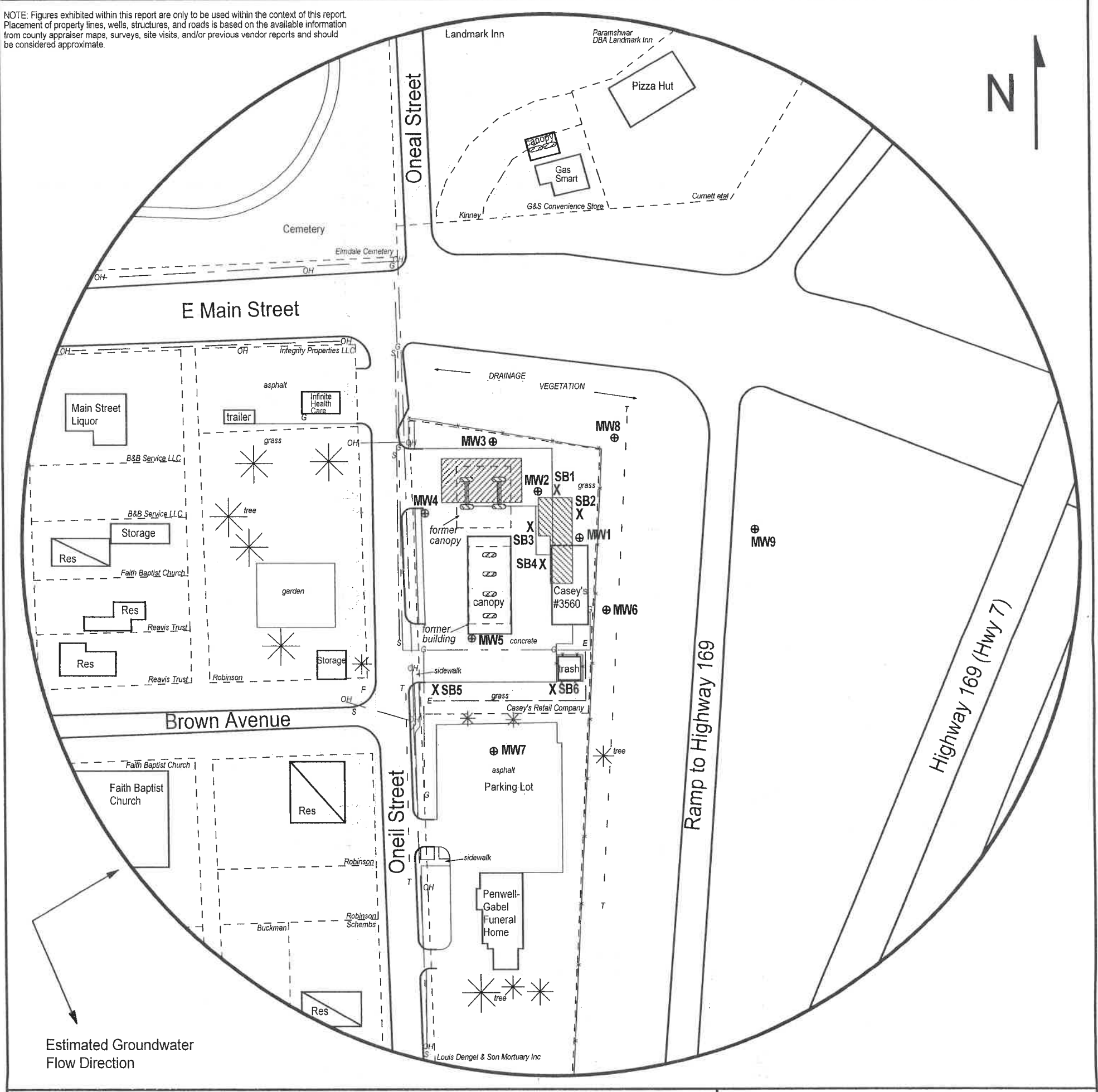


FIGURE 2.2 - 500 FT RADIUS AREA BASE MAP

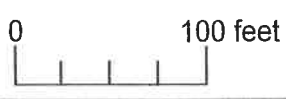
**LEGEND:**

- Approximate Location of Active UST Basin and Pump Islands
- Approximate Location of Former UST Basin, Product Lines and Pump Islands
- Building with Basement
- Approximate Location of Property Line
- Monitoring Well (Installed 3/5-6/18; 3/16/18)
- Soil Boring (Drilled 3/15-16/18)
- Fire Hydrant
- Electric Lines (2 - 6 ft BGS)
- Gas Lines (2 - 6 ft BGS)
- Overhead Lines (25-40 ft high)
- Sewer Lines (2 - 6 ft BGS)
- Telephone Lines (2 - 6 ft BGS)

NOTE: SB5 & SB6 were drilled to collect hydrologic samples.  
NOTE: Utility depths, heights and locations are approximate.



**PROJECT:**  
Casey's #3560  
503 E Main  
Osawatomie, KS  
KDHE ID: U4-061-14982  
Date: 3/19/18



1311 E 25th St., Suite B (785) 841-8707 office  
Lawrence, KS 66046 (785) 865-4282 fax

RECEIVED  
APR 16 2018  
BUREAU OF WATER