

DENNIS L HANDKE

1820 NW 59th Terrace
TOPEKA, KANSAS 66618
785-286-4047 Home
785-286-1990 Fax

Jessica Chapman
Larsen & Associates
1311 E. 25th Street, Suite B
Lawrence, Kansas, 66046

April 2, 2018,

RE: Monitor Well Elevation Survey
503 E. Main, Osawatomie, Kansas

Proj. 18-00H
Casey's #3560
U4-061-14982

Bench Mark Square cut on Southwest corner of concrete sign base near NW corner of property.
Elev: 859.07 North 3306 West 5298 (from SE Cor. Sec. 12-18-22E)

MW-1	rim	860.51	North	3253	NW1/4,NW1/4,SW1/4,NW1/4
	top pipe	860.25	West	5171	Lat= 38.49981 Long = 94.93635
MW-2	rim	861.31	North	3274	NW1/4,NW1/4,SW1/4,NW1/4
	top pipe	860.92	West	5220	Lat= 38.49987 Long = 94.93652
MW3	rim	859.84	North	3306	NW1/4,NW1/4,SW1/4,NW1/4
	top pipe	859.43	West	5272	Lat= 38.49996 Long = 94.93560
MW-4	rim	859.39	North	3262	NW1/4,NW1/4,SW1/4,NW1/4
	top pipe	859.14	West	5309	Lat= 38.49984 Long = 94.93683
MW-5	rim	861.03	North	3138	NW1/4,NW1/4,SW1/4,NW1/4
	top pipe	860.66	West	5292	Lat= 38.49950 Long = 94.93678
MW-6	rim	856.63	North	3158	NW1/4,NW1/4,SW1/4,NW1/4
	top pipe	856.30	West	5131	Lat= 38.49955 Long = 94.93521
MW-7	rim	861.93	North	3014	SW1/4,NW1/4,SW1/4,NW1/4
	top pipe	861.60	West	5270	Lat= 38.49915 Long = 94.93670
MW-8	rim	855.24	North	3305	NW1/4,NW1/4,SW1/4,NW1/4
	top pipe	854.98	West	5135	Lat= 38.49995 Long = 94.93622
MW-9	rim	855.31	North	3260	NW1/4,NW1/4,SW1/4,NW1/4
	top pipe	854.97	West	4995	Lat= 38.49982 Long = 94.93573

Lat & Long derived existing Osawatomie 7.5' quad map. WGS 84.

Elevation established from USGS BM P 221, NAVD 88.

If you have any questions, please feel free to call me. Thank you for the opportunity to be of service to you.

APR 2, 2018
Dennis L Handke RLS
Dennis L Handke
KANSAS
LAND SURVEYOR

Miami
12-18-22E

NOTE: Figures exhibited within this report are only to be used within the context of this report. Placement of property lines, wells, structures, and roads is based on the available information from county appraiser maps, surveys, site visits, and/or previous vendor reports and should be considered approximate.

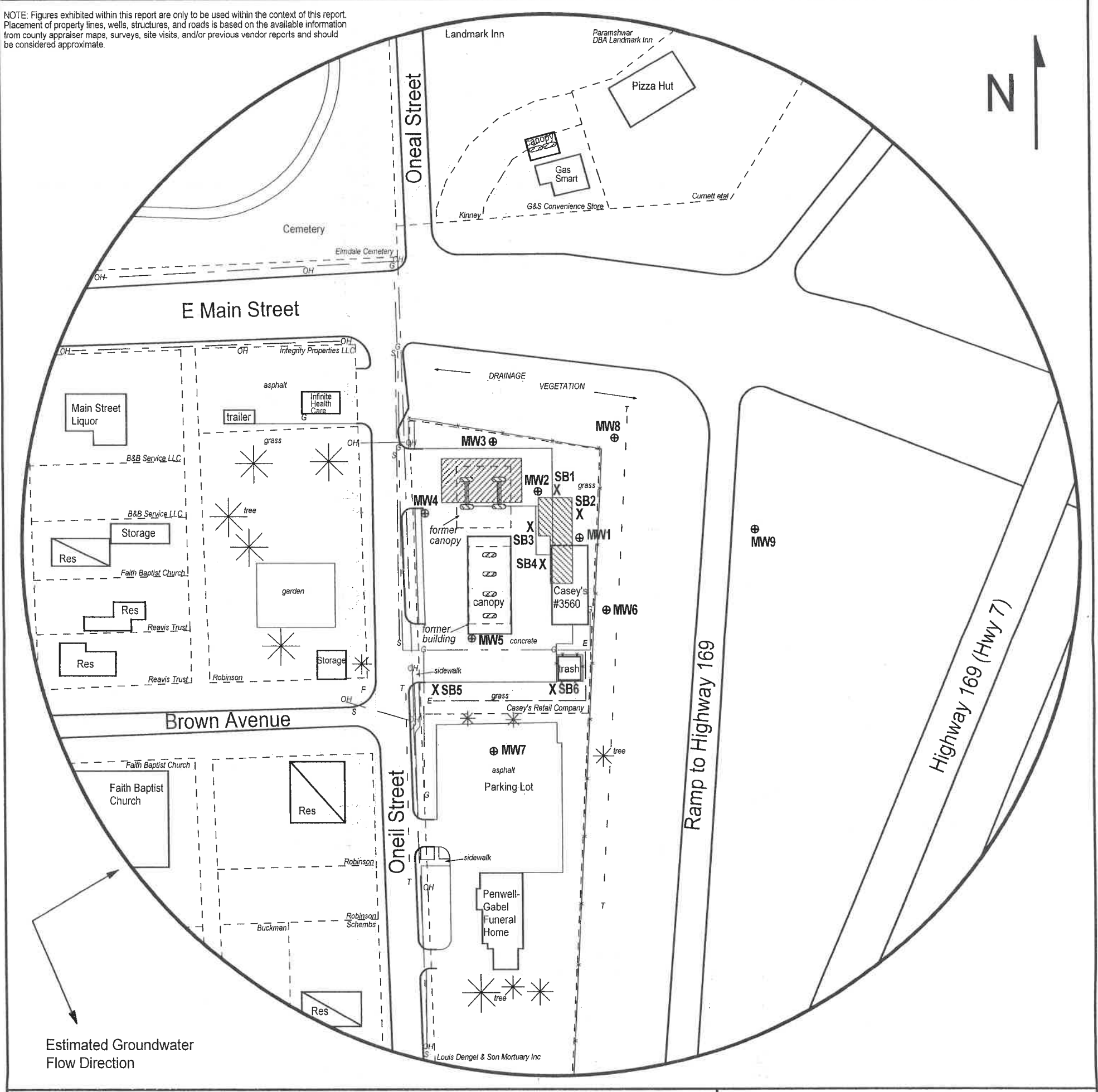


FIGURE 2.2 - 500 FT RADIUS AREA BASE MAP

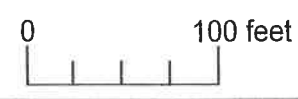
LEGEND:

- Approximate Location of Active UST Basin and Pump Islands
- Approximate Location of Former UST Basin, Product Lines and Pump Islands
- Building with Basement
- Approximate Location of Property Line
- Monitoring Well (Installed 3/5-6/18; 3/16/18)
- Soil Boring (Drilled 3/15-16/18)
- Fire Hydrant
- Electric Lines (2 - 6 ft BGS)
- Gas Lines (2 - 6 ft BGS)
- Overhead Lines (25-40 ft high)
- Sewer Lines (2 - 6 ft BGS)
- Telephone Lines (2 - 6 ft BGS)

NOTE: SB5 & SB6 were drilled to collect hydrologic samples.
NOTE: Utility depths, heights and locations are approximate.



PROJECT:
Casey's #3560
503 E Main
Osawatomie, KS
KDHE ID: U4-061-14982
Date: 3/19/18



1311 E 25th St., Suite B (785) 841-8707 office
Lawrence, KS 66046 (785) 865-4282 fax

RECEIVED
APR 16 2018
BUREAU OF WATER