

WATER WELL RECORD

Form WWC-5

Division of Water Resources App. No.

[Empty box]

Well ID

MW5

[X] Original Record [ ] Correction [ ] Change in Well Use

1 LOCATION OF WATER WELL: County Lyon Fraction NW 1/4 SW 1/4 NE 1/4 SW 1/4 Section Number 8 Township Number T 19 S Range Number R 11 [X] E [ ] W

2 WELL OWNER: Last Name: Business: Buffalo Ridge Properties Address: 2155 Road 170 City: Reading State: KS ZIP: Street or Rural Address where well is located (if unknown, distance and direction from nearest town or intersection): 908 Graham, Emporia, KS

3 LOCATE WELL WITH "X" IN SECTION BOX: [Diagram showing a 3x3 grid with 'X' in the SW quadrant]

4 DEPTH OF COMPLETED WELL: 35 ft Depth(s) Groundwater Encountered: 1) 35 ft 2) ft 3) ft or 4) [ ] Dry Well WELL'S STATIC WATER LEVEL: 22.85 ft [X] below land surface, measured on (mo-day-yr) 11/15/17

5 Latitude: 38.40930 (decimal degrees) Longitude: 98.22162 (decimal degrees) Horizontal Datum: [ ] WGS 84 [X] NAD 83 [ ] NAD 27 Source for Latitude/Longitude: [ ] GPS (unit make/model: ) (WAAS enabled? [ ] Yes [ ] No) [X] Land Survey [ ] Topographic Map [ ] Online Mapper

6 Elevation 1143.49 ft [ ] Ground Level [X] TOC Source [X] Land Survey [ ] GPS [ ] Topographic Map [ ] Other

7 WELL WATER TO BE USED AS: 1 Domestic: [ ] Household [ ] Lawn & Garden [ ] Livestock [ ] Irrigation [ ] Feedlot [ ] Industrial 5 [ ] Public Water Supply: well ID 6 [ ] Dewatering: how many wells? 7 [ ] Aquifer Recharge: well ID 8 [X] Monitoring: well ID MW5 9 Environmental Remediation: well ID [ ] Air Sparge [ ] Soil Vapor Extractor [ ] Recovery [ ] Injection 10 [ ] Oil Field Water Supply: lease 11 Test Hole: well ID [ ] Cased [ ] Uncased [ ] Geotechnical 12 Geothermal: How many bores? a) Closed Loop [ ] Horizontal [ ] Vertical b) Open Loop [ ] Surface Discharge [ ] Inj. of Water [ ] Other (specify):

Was a chemical/bacteriological sample submitted to KDHE? [ ] Yes [X] No If yes, date sample was submitted: Water well disinfected? [ ] Yes [X] No

8 TYPE OF CASING USED: [ ] Steel [X] PVC [ ] Other CASING JOINTS: [ ] Glued [ ] Clamped [ ] Welded [X] Threaded Casing diameter 2 in. to 20 ft, Diameter in. to ft, Diameter in. to ft, Casing height above land surface -0.31 in. Weight lbs./ft. Well thickness or gauge No TYPE OF SCREEN OR PERFORATION MATERIAL: [ ] Steel [ ] Stainless Steel [ ] Fiberglass [X] PVC [ ] Brass [ ] Galvanized Steel [ ] Concrete tile [ ] None used (open hole) SCREEN OR PERFORATION OPENINGS ARE: [ ] Continuous Slot [X] Mill Slot [ ] Gauze Wrapped [ ] Torch Cut [ ] Drilled Holes [ ] Other (Specify) [ ] Louvered Shutter [ ] Key Punched [ ] Wire Wrapped [ ] Saw Cut [ ] None (Open Hole) SCREEN-PERFORATED INTERVALS: From 20 ft. to 35 ft, From ft. to ft, From ft. to ft, GRAVEL PACK INTERVALS: From 18 ft. to 35 ft, From ft. to ft, From ft. to ft,

9 GROUT MATERIAL: [ ] Neat cement [ ] Cement grout [X] Bentonite [X] Other Concrete: 0-0.5' Grout intervals: From 0.5 ft. to 18 ft, From ft. to ft, From ft. to ft,

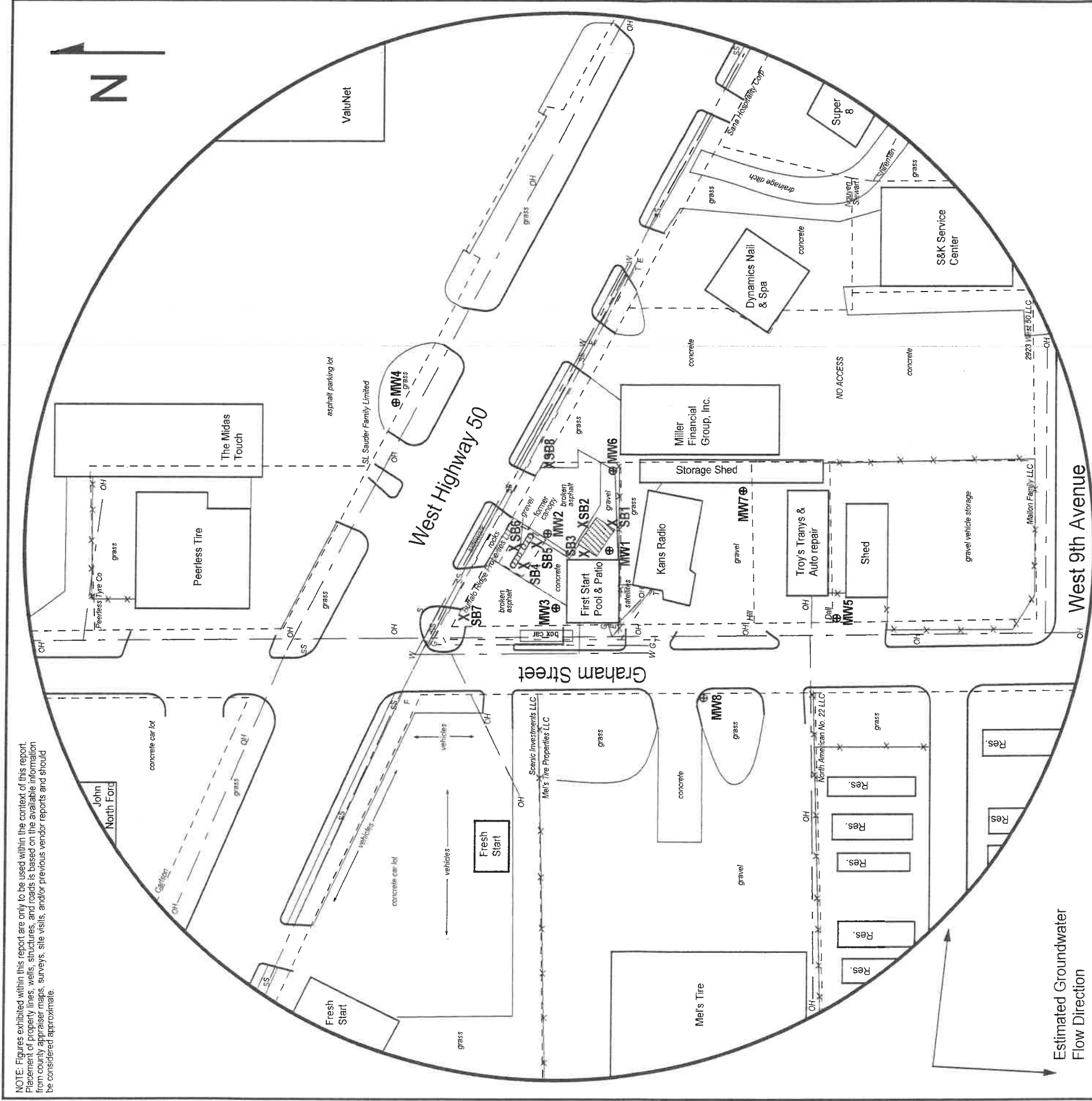
Nearest source of possible contamination: [ ] Septic Tank [ ] Lateral Lines [ ] Pit Privy [ ] Livestock Pens [ ] Insecticide Storage [ ] Sewer Lines [ ] Cess Pool [ ] Sewage Lagoon [X] Fuel Storage [ ] Abandoned Water Well [ ] Watertight Sewer Lines [ ] Seepage Pit [ ] Feedyard [ ] Fertilizer Storage [ ] Oil Well / Gas Well [ ] Other (Specify) Direction from well? N Distance from well? ~220 ft

Table with 6 columns: FROM, TO, LITHOLOGIC LOG, FROM, TO, LITHO. LOG (cont.) or PLUGGING INTERVALS. Rows show depth intervals and lithology: 0-0.2 Concrete, 0.2-1 Gravel fill, 1-6 Silty clay, some gravel, 6-34 Silty clay, 34-35 Gravel & sand w/ clay.

Notes: KDHE ID: First Start Pool & Patio; U3-056-14877 Target of monitoring well is shallow groundwater, <20' of grout was installed at the direction of KDHE.

11 CONTRACTOR'S OR LANDOWNER'S CERTIFICATION: This water well was [X] constructed, [ ] reconstructed or [ ] plugged under my jurisdiction and was completed on (mo-day-year) 11/14/17 and this record is true to the best of my knowledge and belief. Kansas Water Well Contractor's License No 757 This Water Well Record was completed on (mo-day-year) 12/18/17 under the business name of Larsen & Associates, Inc. Signature

NOTE: Figures exhibited within this report are only to be used within the context of this report. Placement of property lines, wells, structures, and roads is based on the available information from county appraiser maps, surveys, site visits, and/or previous vendor reports and should be considered approximate.



**FIGURE 2.2 - 500 FT RADIUS AREA BASE MAP**

**PROJECT:**  
 First Start Pool & Patio  
 2929 W. Hwy 50  
 Emporia, KS  
 KDHE ID: U3-056-14877  
 Date: 11/15-16/17

**LEGEND:**

- Approximate Location of Former UST Basin, Product Line and Pump Islands
- Approximate Location of Property Line
- Monitoring Well (Installed 11/8-9/17; 11/13-14/17)
- Soil Boring (Drilled 11/15-16/17)
- Fire Hydrant
- Sewer Inlet
- Electric Lines (2 - 6 ft BGS)
- Gas Lines (2 - 6 ft BGS)
- Overhead Lines (25-40 ft high)
- Sanitary Sewer (2 - 6 ft BGS)
- Telephone Lines (2 - 6 ft BGS)
- Water Lines (2 - 6 ft BGS)

NOTE: Utility depths, heights and locations are approximate. SB7 & SB8 were drilled to collect hydrologic samples.

**PROJECT:**  
 First Start Pool & Patio  
 2929 W. Hwy 50  
 Emporia, KS  
 KDHE ID: U3-056-14877  
 Date: 11/15-16/17



1311 E 25th St., Suite B (785) 841-8707 office  
 Lawrence, KS 66046 (785) 865-4282 fax

RECEIVED  
 JAN 25 2018  
 BUREAU OF WATER

# DENNIS L HANDKE

1820 NW 59th Terrace  
TOPEKA, KANSAS 66618  
785-286-4047 Home  
785-286-1990 Fax

Jessica Chapman  
Larsen & Associates  
1311 E. 25<sup>th</sup> Street, Suite B  
Lawrence, Kansas, 66046

December 4, 2017  
Revised December 20, 2017

RE: Monitor Well Elevation Survey  
2929 W. Hwy 50, Emporia, Kansas

Proj. 17-00II  
First Start Pool & Patio  
U3-056-14877

Bench Mark: Chisled X on top SE bolt of South concrete sign base at Northwest corner of property.  
Elev: 1146.95      North 1843      West 3930      (from SE Cor. Sec. 8-19-11E)

MW-1	rim	1146.26	North	1718	NW1/4,SW1/4,NE1/4,SW1/4
	top pipe	1146.01	West	3871	Lat= 38.40988 Long = 98.22138
MW-2	rim	1145.88	North	1774	NW1/4,SW1/4,NE1/4,SW1/4
	top pipe	1145.62	West	3849	Lat= 38.41004 Long = 98.22130
MW-3	rim	1145.99	North	1767	NW1/4,SW1/4,NE1/4,SW1/4
	top pipe	1145.59	West	3919	Lat= 38.41002 Long = 98.22155
MW-4	rim	1145.91	North	1907	NW1/4,SW1/4,NE1/4,SW1/4
	top pipe	1145.49	West	3734	Lat= 38.41040 Long = 98.22089
MW-5	rim	1143.80	North	1503	NW1/4,SW1/4,NE1/4,SW1/4
	top pipe	1143.49	West	3937	Lat= 38.40930 Long = 98.22162
MW-6	rim	1145.07	North	1712	NW1/4,SW1/4,NE1/4,SW1/4
	top pipe	1144.61	West	3790	Lat= 38.40986 Long = 98.22110
MW-7	rim	1144.60	North	1590	NW1/4,SW1/4,NE1/4,SW1/4
	top pipe	1144.32	West	3808	Lat= 38.40953 Long = 98.22117
MW-8	rim	1145.15	North	1636	NE1/4,SE1/4,NW1/4,SW1/4
	top pipe	1144.75	West	3990	Lat= 38.40966 Long = 98.22180

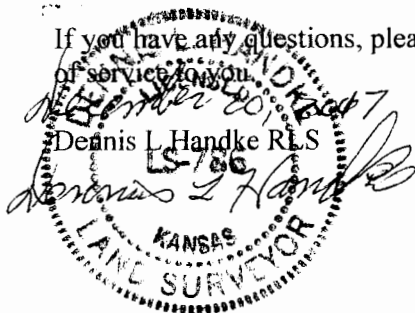
Lat & Long derived existing Emporia 7.5' quad map. WGS 84.

Elevation established from Lyon County BM# K-150 NAVD 83.

If you have any questions, please feel free to call me. Thank you for the opportunity to be

of service to you.

December 20, 2017  
Dennis L Handke RLS



RECEIVED  
JAN 25 2018  
BUREAU OF WATER