

WATER WELL RECORD

Form WWC-5

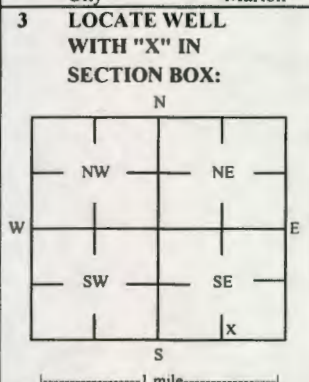
Division of Water Resources App. No.

Well ID MW3

Original Record Correction Change in Well Ust

1 LOCATION OF WATER WELL: Fraction NW 1/4 SW 1/4 SE 1/4 SE 1/4 Section Number 31 Township Number T 19 S Range Number R 4 E

2 WELL OWNER: Last Name: First: Street or Rural Address where well is located (if unknown, distance and direction from nearest town or intersection): 320 W Santa Fe, Marion, KS



4 DEPTH OF COMPLETED WELL: 25.5 ft. WELL'S STATIC WATER LEVEL: 18.19 ft. below land surface, measured on (mo-day-yr) 8/18-19/22

5 Latitude: 38.34965 (decimal degrees) Longitude: 97.02580 (decimal degrees) Horizontal Datum: X WGS 84

6 Elevation: 1309.55 ft. Ground Level TOC Source: X Land Survey

7 WELL WATER TO BE USED AS: 1 Domestic: Household, Lawn & Garden, Livestock, Irrigation, Feedlot, Industrial

Was a chemical/bacteriological sample submitted to KDHE? Yes No X No If yes, date sample was submitted:

8 TYPE OF CASING USED: Steel PVC Other CASING JOINTS: Glued Clamped Welded X Threaded Casing diameter 2 in. to 10.5 ft.

9 GROUT MATERIAL: Neat cement Cement grout X Bentonite X Other Concrete: 0-0.5' Grout intervals: From 0.5 ft. to 8.5 ft.

Nearest source of possible contamination: Septic Tank Lateral Lines Pit Privy Livestock Pens Insecticide Storage

Table with columns: FROM, TO, LITHOLOGIC LOG, FROM, TO, LITHO. LOG (cont.) or PLUGGING INTERVALS. Rows: 0-0.5 Gravel, 0.5-19 Clay, 19-25.5 Clay and silt.

Notes: KDHE ID: Former Power Plant; U5-057-15328 Target of monitoring well is shallow groundwater, <20' of grout was installed at the direction of KDHE.

11 CONTRACTOR'S OR LANDOWNER'S CERTIFICATION: This water well was X constructed, reconstructed, or plugged under my jurisdiction and was completed on (mo-day-year) 8/15/22

T195 R4E Sec. 31 Marion  
KSA 82a-1212

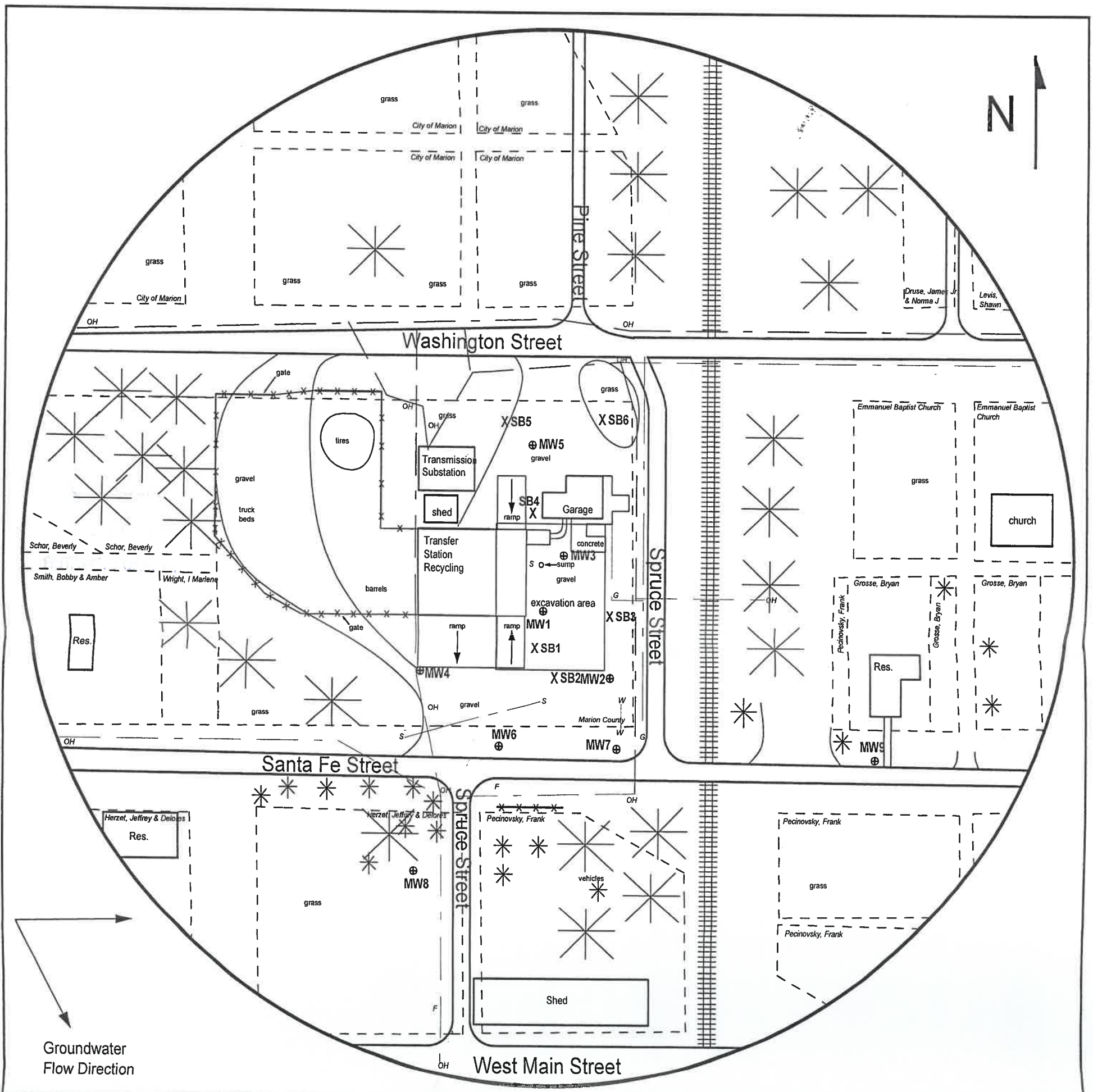


FIGURE 2.1 - 500 FT RADIUS AREA BASE MAP



**PROJECT:**

Former Power Plant  
320 West Santa Fe  
Marion, KS  
KDHE ID: U5-057-15328  
Date: 8/18-19/22



1311 E 25th St., Suite B (785) 841-8707 office  
Lawrence, KS 66046 (785) 865-4282 fax

**LEGEND:**

- ⊕ New Monitoring Well (Installed 8/15-18/22)
- X Soil Boring (Drilled 8/16-17/22)
- OH ——— Overhead Lines
- S ——— Sanitary Sewer (2 - 6 ft BGS)
- W ——— Water (2 - 6 ft BGS)
- G ——— Gas (2 - 6 ft BGS)

NOTE: SB5 & SB6 were drilled to collect hydrologic samples.  
NOTE: Utility depths and locations are approximate.

719 R4E Sec. 31  
KSA 82a-1212  
Marion

# DENNIS L HANDKE

1820 NW 59th Terrace  
TOPEKA, KANSAS 66618  
785-286-4047 Home  
785-286-1990 Fax

Jess Chapman  
Larsen & Associates  
1311 E. 25<sup>th</sup> Street, Suite B  
Lawrence, Kansas, 66046

September 1, 2022

RE: Monitor Well Elevation Survey  
320 West Santa Fe, Marion, Kansas

Proj. 22-00WW  
Former Power Plant  
US-057-15328

Bench Mark: Chisled Square on center of concrete floor of entrance to Northeast building on property.  
Elev: 1310.57      North 544.50      West 1080.76      (from SE Cor. Sec. 31-19-4E)

MW-1	rim	1309.74	North	460.45	NW1/4,SW1/4,SE1/4,SE1/4
	top pipe	1309.25	West	1116.73	Lat= 38.34951 Long = 97.02588
MW-2	rim	1308.82	North	392.77	NW1/4,SW1/4,SE1/4,SE1/4
	top pipe	1308.38	West	1062.76	Lat= 38.34932 Long = 97.02658
MW-3	rim	1310.12	North	511.38	NW1/4,SW1/4,SE1/4,SE/4
	top pipe	1309.55	West	1092.93	Lat= 38.34965 Long = 97.02580
MW-4	rim	1311.34	North	391.19	NW1/4,SW1/4,SE1/4,SE1/4
	top pipe	1310.93	West	1237.35	Lat= 38.34931 Long = 97.02629
MW-5	rim	1309.23	North	618.81	NW1/4,SW1/4,SE1/4,SE1/4
	top pipe	1308.66	West	1118.86	Lat= 38.34994 Long = 97.02589
MW-6	rim	1309.67	North	324.42	SW1/4,SW1/4,SE1/4,SE1/4
	top pipe	1309.33	West	1155.94	Lat= 38.34913 Long = 97.02601
MW-7	rim	1309.42	North	321.08	SW1/4,SW1/4,SE1/4,SE1/4
	top pipe	1309.03	West	1054.76	Lat= 38.34913 Long = 97.02565
MW-8	rim	1308.68	North	209.33	SW1/4,SW1/4,SE1/4,SE1/4
	top pipe	1308.22	West	1241.66	Lat= 38.34881 Long = 97.02630
MW-9	rim	1307.11	North	313.77	SE1/4,SW1/4,SE1/4,SE1/4
	top pipe	1306.72	West	799.70	Lat= 38.34912 Long = 97.02476

Lat & Long derived from Marion 7.5' quad map. WGS 84.

Elevation established from NGS BM D 50. NAVD 88.

If you have any questions, please feel free to call me. Thank you for the opportunity to be of service to you.

