

WATER WELL RECORD

Form WWC-5

Division of Water Resources App. No.

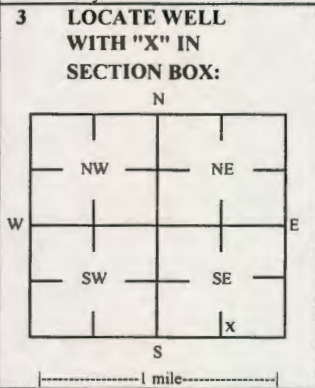
Well ID

MW7

Original Record Correction Change in Well Use

1 LOCATION OF WATER WELL: Fraction Section Number Township Number Range Number

2 WELL OWNER: Last Name: Business: City of Marion Address: 208 E Santa Fe City: Marion State: KS ZIP: 66861



4 DEPTH OF COMPLETED WELL: 25.5 ft. WELL'S STATIC WATER LEVEL: 17.67 ft.

5 Latitude: 38.34913 Longitude: 97.02565

7 WELL WATER TO BE USED AS: 1 Domestic: 2 Irrigation 3 Feedlot 4 Industrial

Was a chemical/bacteriological sample submitted to KDHE? Yes No

8 TYPE OF CASING USED: Steel PVC Other CASING JOINTS: Glued Clamped Welded Threaded

9 GROUT MATERIAL: Neat cement Cement grout Bentonite Other Concrete: 0-0.5'

Nearest source of possible contamination: Septic Tank Sewer Lines Watertight Sewer Lines

Table with columns: 10 FROM, TO, LITHOLOGIC LOG, FROM, TO, LITHO. LOG (cont.) or PLUGGING INTERVALS

Notes: KDHE ID: Former Power Plant; U5-057-15328 Target of monitoring well is shallow groundwater, <20' of grout was installed at the direction of KDHE.

11 CONTRACTOR'S OR LANDOWNER'S CERTIFICATION: This water well was constructed, reconstructed, or plugged under my jurisdiction...

T195 R4E Sec. 31 Marion
KSA 82a-1212

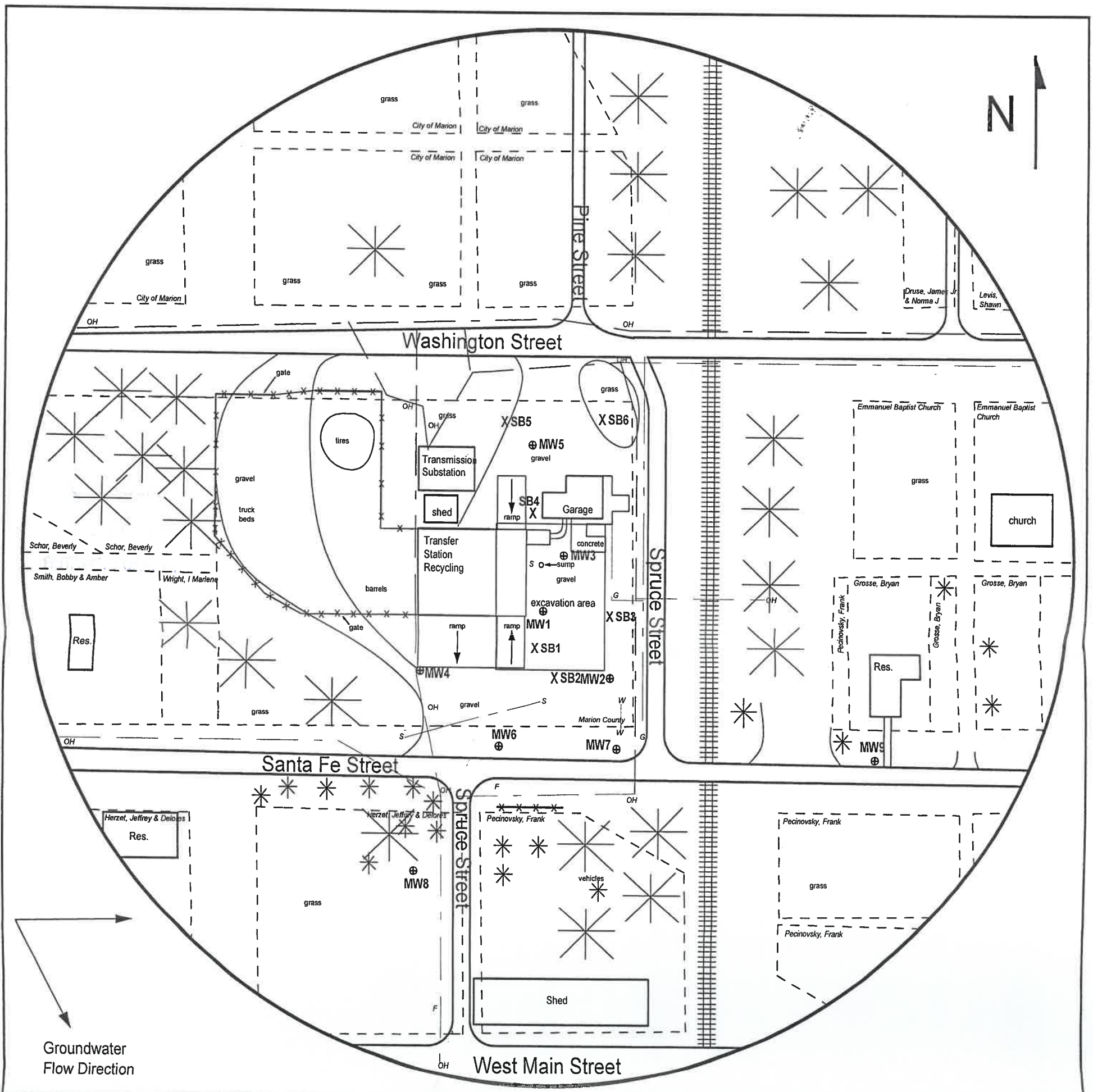


FIGURE 2.1 - 500 FT RADIUS AREA BASE MAP



PROJECT:

Former Power Plant
320 West Santa Fe
Marion, KS
KDHE ID: U5-057-15328
Date: 8/18-19/22



1311 E 25th St., Suite B (785) 841-8707 office
Lawrence, KS 66046 (785) 865-4282 fax

LEGEND:

- ⊕ New Monitoring Well (Installed 8/15-18/22)
- X Soil Boring (Drilled 8/16-17/22)
- OH ——— Overhead Lines
- S ——— Sanitary Sewer (2 - 6 ft BGS)
- W ——— Water (2 - 6 ft BGS)
- G ——— Gas (2 - 6 ft BGS)

NOTE: SB5 & SB6 were drilled to collect hydrologic samples.
NOTE: Utility depths and locations are approximate.

719 R4E Sec. 31
KSA 82a-1212
Marion

DENNIS L HANDKE

1820 NW 59th Terrace
TOPEKA, KANSAS 66618
785-286-4047 Home
785-286-1990 Fax

Jess Chapman
Larsen & Associates
1311 E. 25th Street, Suite B
Lawrence, Kansas, 66046

September 1, 2022

RE: Monitor Well Elevation Survey
320 West Santa Fe, Marion, Kansas

Proj. 22-00WW
Former Power Plant
US-057-15328

Bench Mark: Chisled Square on center of concrete floor of entrance to Northeast building on property.
Elev: 1310.57 North 544.50 West 1080.76 (from SE Cor. Sec. 31-19-4E)

| | | | | | |
|------|----------|---------|-------|---------|-------------------------------|
| MW-1 | rim | 1309.74 | North | 460.45 | NW1/4,SW1/4,SE1/4,SE1/4 |
| | top pipe | 1309.25 | West | 1116.73 | Lat= 38.34951 Long = 97.02588 |
| MW-2 | rim | 1308.82 | North | 392.77 | NW1/4,SW1/4,SE1/4,SE1/4 |
| | top pipe | 1308.38 | West | 1062.76 | Lat= 38.34932 Long = 97.02658 |
| MW-3 | rim | 1310.12 | North | 511.38 | NW1/4,SW1/4,SE1/4,SE/4 |
| | top pipe | 1309.55 | West | 1092.93 | Lat= 38.34965 Long = 97.02580 |
| MW-4 | rim | 1311.34 | North | 391.19 | NW1/4,SW1/4,SE1/4,SE1/4 |
| | top pipe | 1310.93 | West | 1237.35 | Lat= 38.34931 Long = 97.02629 |
| MW-5 | rim | 1309.23 | North | 618.81 | NW1/4,SW1/4,SE1/4,SE1/4 |
| | top pipe | 1308.66 | West | 1118.86 | Lat= 38.34994 Long = 97.02589 |
| MW-6 | rim | 1309.67 | North | 324.42 | SW1/4,SW1/4,SE1/4,SE1/4 |
| | top pipe | 1309.33 | West | 1155.94 | Lat= 38.34913 Long = 97.02601 |
| MW-7 | rim | 1309.42 | North | 321.08 | SW1/4,SW1/4,SE1/4,SE1/4 |
| | top pipe | 1309.03 | West | 1054.76 | Lat= 38.34913 Long = 97.02565 |
| MW-8 | rim | 1308.68 | North | 209.33 | SW1/4,SW1/4,SE1/4,SE1/4 |
| | top pipe | 1308.22 | West | 1241.66 | Lat= 38.34881 Long = 97.02630 |
| MW-9 | rim | 1307.11 | North | 313.77 | SE1/4,SW1/4,SE1/4,SE1/4 |
| | top pipe | 1306.72 | West | 799.70 | Lat= 38.34912 Long = 97.02476 |

Lat & Long derived from Marion 7.5' quad map. WGS 84.

Elevation established from NGS BM D 50. NAVD 88.

If you have any questions, please feel free to call me. Thank you for the opportunity to be

