

WATER WELL RECORD Form WWC-5

Original Record Correction Change in Well Use

Division of Water Resources App. No.

Well ID

1 LOCATION OF WATER WELL: County: Fraction Section Number Township Number Range Number

2 WELL OWNER: Last Name: Business: Address: City: State: ZIP: Street or Rural Address where well is located

3 LOCATE WELL WITH 'X' IN SECTION BOX: 4 DEPTH OF COMPLETED WELL: 5 Latitude: Longitude: Datum: Source for Latitude/Longitude: 6 Elevation: Source:

7 WELL WATER TO BE USED AS: 1. Domestic: 2. Irrigation: 3. Feedlot: 4. Industrial: 5. Public Water Supply: well ID: 6. Dewatering: how many wells?: 7. Aquifer Recharge: well ID: 8. Monitoring: well ID: 9. Environmental Remediation: well ID: 10. Oil Field Water Supply: lease: 11. Test Hole: well ID: 12. Geothermal: how many bores?: 13. Other (specify):

Was a chemical/bacteriological sample submitted to KDHE? Water well disinfected?

8 TYPE OF CASING USED: CASING JOINTS: Casing diameter: Casing height above land surface: TYPE OF SCREEN OR PERFORATION MATERIAL: SCREEN OR PERFORATION OPENINGS ARE: SCREEN-PERFORATED INTERVALS: GRAVEL PACK INTERVALS:

9 GROUT MATERIAL: Nearest source of possible contamination: Direction from well? Distance from well?

Table with columns: FROM, TO, LITHOLOGIC LOG, FROM, TO, LITHO. LOG (cont.) or PLUGGING INTERVALS. Includes a Notes section.

11 CONTRACTOR'S OR LANDOWNER'S CERTIFICATION: This water well was constructed, reconstructed, or plugged under my jurisdiction and was completed on (mo-day-year) and this record is true to the best of my knowledge and belief.

18843 Aug 20 2018

FULL SITE SURVEY

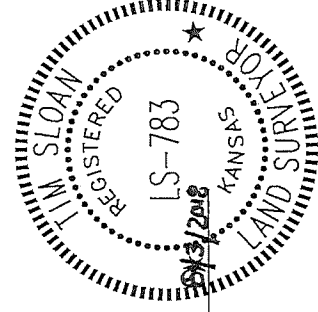
COASTAL MART #2524
PEABODY, KANSAS

Point	North Coordinate	East Coordinate	SE Cor. Sec. 04 North	Distance From West	* Elev. Top of Rim or PK Nail	Elev. Top of PVC Pipe	Latitude North	Longitude West
SE Cor. Sec. 4-1225-R3E	5000	5000						
MW1	10278.89	2400.06	5278.89	2599.94	1389.39	1389.14	38.17435	97.10690
MW2	10291.25	2330.48	5291.25	2669.52	1391.00	1390.57	38.17439	97.10714
MW3	10245.03	2415.96	5245.03	2584.04	1388.75	1388.37	38.17426	97.10685
MW4	10328.05	2297.28	5328.05	2742.72	1390.31	1390.01	38.17449	97.10740
MW5	10244.35	2352.42	5244.35	2647.58	1389.94	1389.94	38.17426	97.10767
MW6	10293.10	2459.47	5293.10	2640.53	1389.92	1389.38	38.17439	97.10669
MW7	10156.51	2418.94	5156.51	2581.06	1387.88	1387.52	38.17402	97.10684
MW8	10205.61	2454.52	5205.61	2545.48	1388.73	1388.40	38.17415	97.10671
MW9	10006.69	2265.76	5006.69	2734.24	1385.74	1385.19	38.17361	97.10737
MW10	10017.74	2418.14	5017.74	2581.86	1386.07	1385.77	38.17364	97.10684
MW11	10020.84	2807.77	5020.84	2192.23	1392.55	1392.13	38.17364	97.10549
MW12	10288.27	2347.09	5288.27	2652.91	1389.79	1389.20	38.17444	97.10696
MW13	10288.27	2297.37	5288.27	2702.63	1390.93	1390.32	38.17452	97.10713
MW14	10278.39	2370.53	5278.39	2629.47	1389.62	1389.26	38.17449	97.10688
MW15	10250.93	2334.98	5250.93	2665.02	1389.74	1389.26	38.17442	97.10700
MW16	10263.50	2307.46	5263.50	2692.54	1390.42	1390.17	38.17445	97.10710
MW17	10294.22	2341.28	5294.22	2658.72	1389.73	1389.24	38.17443	97.10698
MW18	10241.64	2326.52	5241.64	2673.48	1389.89	1389.42	38.17439	97.10703
Site BM	10219.08	2290.33	5219.08	2709.67	B.M. Elev. = 1391.56			

Description: "□" Square cut top curb 4' east of NE corner of Coastal Mart building corner

LEGEND

- MW1 (circle with M) MONITORING WELL LOCATION
- EXIST W (dashed line) WATER LINE
- OE (dashed line) OVERHEAD ELECTRIC
- EXIST SS (dashed line) SANITARY SEWER
- Sign (circle with S) SIGN
- PP (square with P) POWER POLE
- PP WITH TRANSFORMER (square with P and T)
- ↓ (arrow) DEADMAN ANCHOR
- WM (circle with W) WATER METER
- SS (circle with S) SANITARY SEWER MANHOLE
- BM (circle with B) SITE BENCHMARK
- DRAINAGE DIRECTION (arrow)
- E/E (line) EDGE OF ROAD TO EDGE OF ROAD
- B/B (line) BACK TO BACK OF CURB

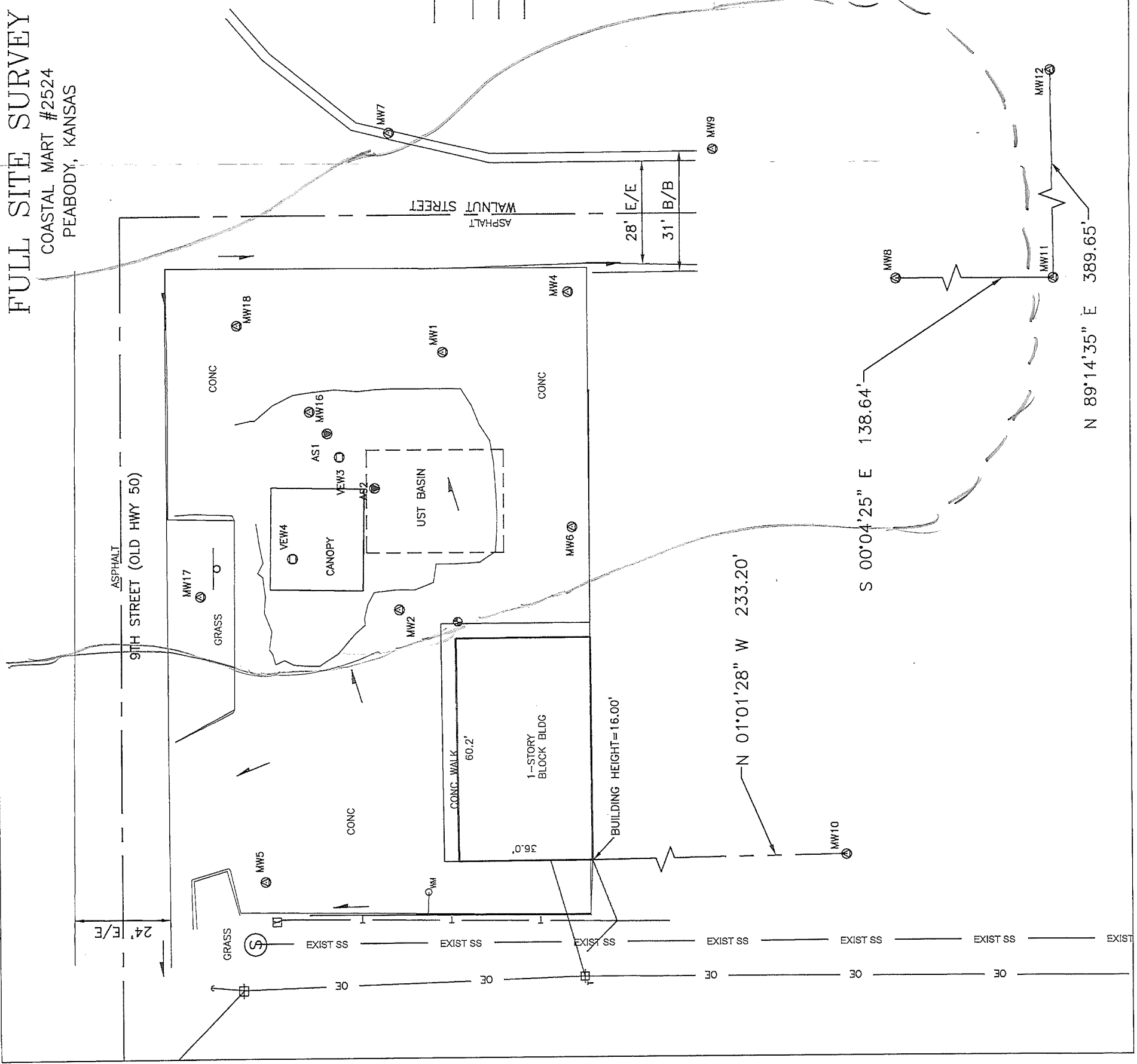


SMH Consultants
By: Tim Sloan
Tim Sloan
Tim Sloan, P.S.
President

FIGURE 1.3



2017 Vonesto Place, Suite 110 • Manhattan, Kansas 66503
(785) 776-0541 • FAX 776-9760 • Email: tim@smhconsultants.com
Drawn By: TMC Project #1806MN1173 DD #



AREA OF CONTAMINATION