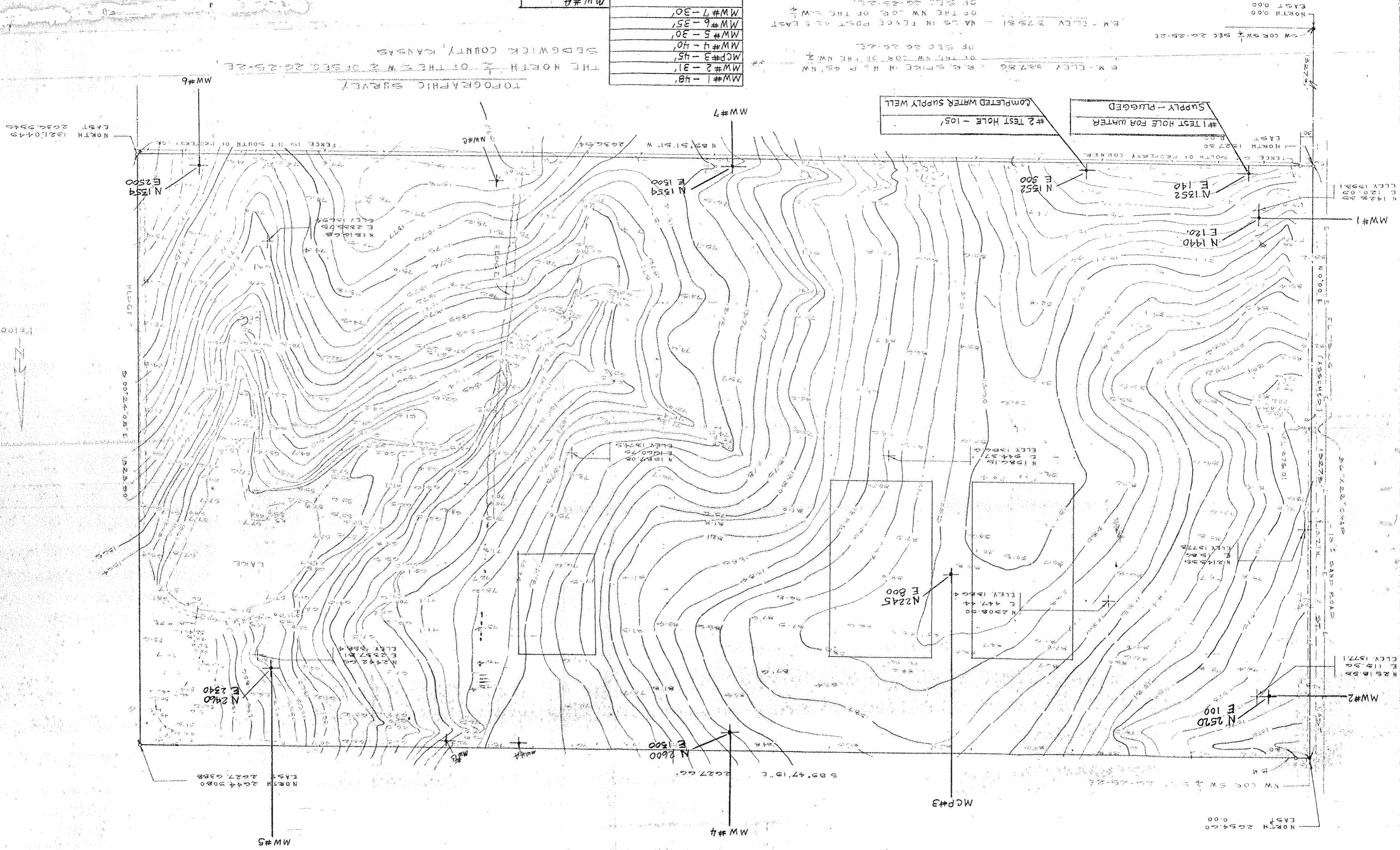


MW#1 - 48'	MW#2 - 31'
MW#2 - 31'	MCP#3 - 45'
MW#3 - 45'	MW#4 - 40'
MW#4 - 40'	MW#5 - 30'
MW#5 - 30'	MW#6 - 35'
MW#6 - 35'	MW#7 - 30'
MW#7 - 30'	MW#A
MW#B	MW#C
MW#D	MW#Q
MCP-MONITOR CONTROL POINT	SEE ATTACHED LOGS
MW - MONITOR WELL	HARP WELL & PUMP SERVICE, INC.

THE NORTH 1/2 OF THE SW 1/4 OF SEC. 26, T. 25-N, R. 24-E, SEDGWICK COUNTY, KANSAS

TOPOGRAPHIC SURVEY



W CORNER SEC 26, T. 25-N, R. 24-E
 E.M. ELEV 227.86 - R.S. SPIKE IN H.P. 45, NW
 OF THE NW COR. OF THE NW 1/4
 OF SEC 26, T. 25-N, R. 24-E
 VALS IN FENCE POST 42 & 43
 ON THE NW COR. OF THE NW 1/4
 OF SEC 26, T. 25-N, R. 24-E

NORTH 12.000 EAST 0.000

ELEV 1100

ELEV 1200

ELEV 1377.1

NORTH 20.5460 EAST 2.627.038

NORTH 22.000 EAST 0.000