

## MW-17S

Check: ☒ White Copy, ☐ Blue Copy, ☐ Pink Copy

## MONITOR WELL LOG

Well ID: MW-17S

Total Depth: 30 ft bgs

### PROJECT INFORMATION

**Project Name:** Former Unocal Chemical Distribution Facility

**Location:** Wichita, KS

**Logged By:** Kim Nguyen

**Project Manager:** Derek Peacock

**Ground Surface Elevation (ft, MSL):** 1348.68

**Top of Casing Elevation (ft, MSL):** 1351.32

**Coordinates:** N1709889.50 E1656449.54

### DRILLING INFORMATION

**Drilling Company:** PSA Environmental

**Driller:** Aaron Butler

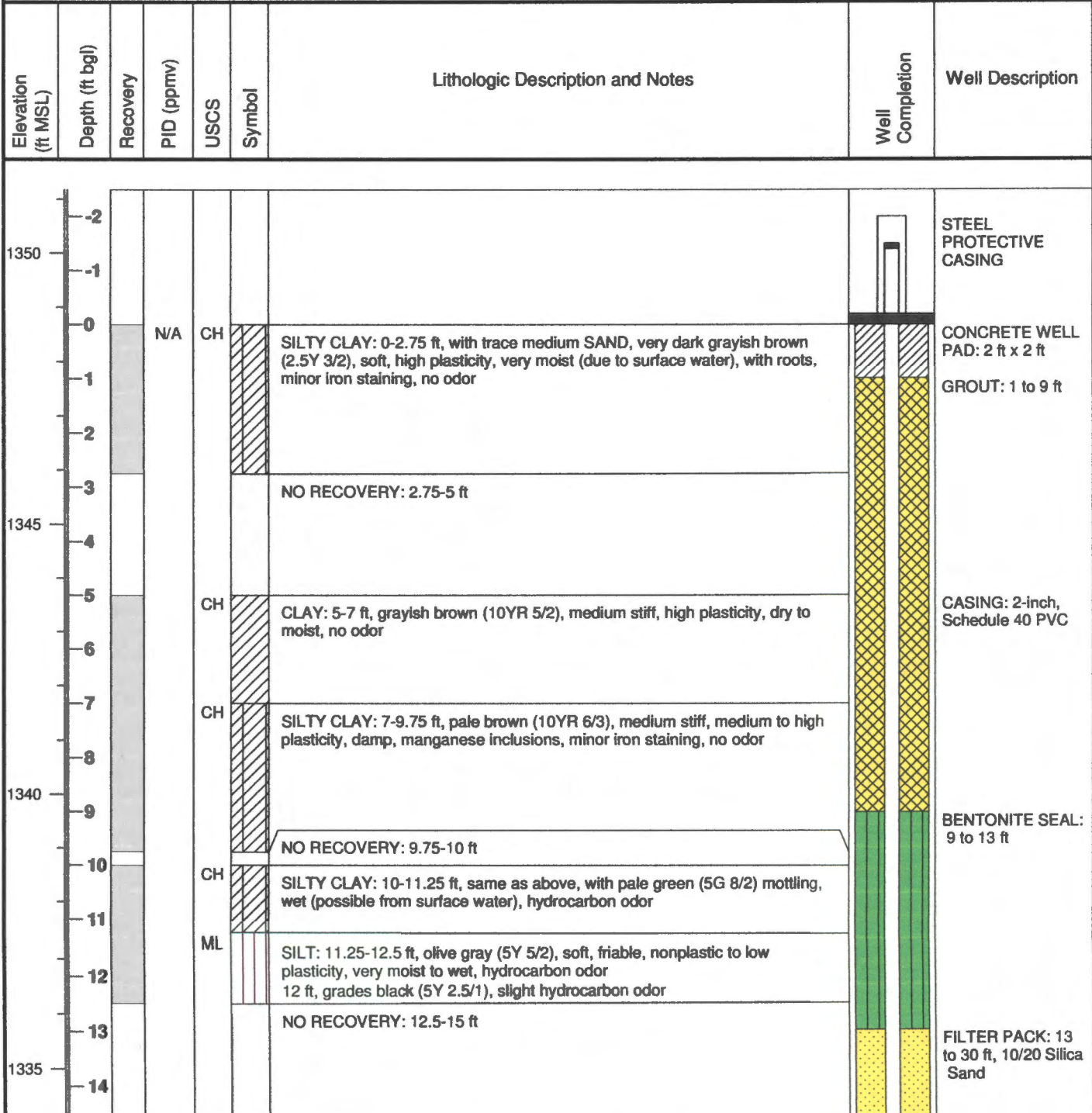
**Drilling Equipment:** Geoprobe 6620 DT

**Drilling Method:** Hollow Stem Auger

**Sampling Method:** DPT

**Borehole Diameter:** 8.5 inch

**Dates Drilled:** 4/27/09-4/29/09



Elevation (ft MSL)	Depth (ft bgl)	Recovery	PID (ppmv)	USCS	Symbol	Lithologic Description and Notes	Well Completion	Well Description
1330	15				ML	SILT: 15-17.5 ft, WEATHERED SHALE, greenish black (5GY 2.5/1), soft, nonplastic, saturated to wet (possible from surface water), predominant white precipitate, strong hydrocarbon odor	SCREEN: 15 to 30 ft, 2-inch PVC, 0.010-inch slot	
	16							
	17					SAND: 17.5-17.75 ft, with SILT and CLAY, greenish gray (10Y 5/1), loose to medium dense, very moist, medium to coarse sand		
	18			SW	CL	SANDY CLAY: 17.75-22.5 ft, greenish gray (10Y 5/1), medium stiff, low to medium plasticity, damp to dry, hydrocarbon odor		
	19					19 ft, grades with decrease in SAND, hydrocarbon odor		
	20					20-22.5 ft, wet, hydrocarbon odor		
	21			SP		21-21.2 ft, SAND lens, loose, wet, medium to very coarse sand		
	22							
	23			CL		SILTY CLAY: 22.5-25 ft, greenish gray (5G 5/1) and red (2.5YR 4/6), stiff to very stiff, nonplastic to low plasticity, dry		
1325	24					23.5 ft, grades to olive yellow (2.5Y 6/6), stiff to hard, dry, manganese inclusions, iron staining, no odor		
	25			SW		24.75 ft, grades soft, no odor		
	26					SAND: 25-26 ft, with CLAY, gray (5Y 5/1), loose, wet, medium to very coarse, hydrocarbon odor		
	27			ML		CLAYEY SILT: 26-29.5 ft, WEATHERED SHALE, dark gray (4/N), hard, nonplastic, dry, no odor		
	28							
1320	29							
	30					29.5 ft, refusal Borehole Total Depth = 29.5 ft bgs Well Total Depth = 30 ft bgs		
	31					* Sample was stuck in sampler and extracted from 25-30 ft. The 25-30 ft sample description is general and approximate. * PID was not functioning properly.*		