

MW-27

Check: ☒ White Copy, ☐ Blue Copy, ☐ Pink Copy



Austin, Texas

MONITOR WELL LOG

Well ID: MW-27

Total Depth: 25 ft bgs

PROJECT INFORMATION

Project Name: Former Unocal Chemical Distribution Facility

Location: Wichita, KS

Logged By: Kim Nguyen

Project Manager: Derek Peacock

Ground Surface Elevation (ft, MSL): 1349.94

Top of Casing Elevation (ft, MSL): 1352.51

Coordinates: N1710047.26 E1656474.46

DRILLING INFORMATION

Drilling Company: PSA Environmental

Driller: Aaron Butler

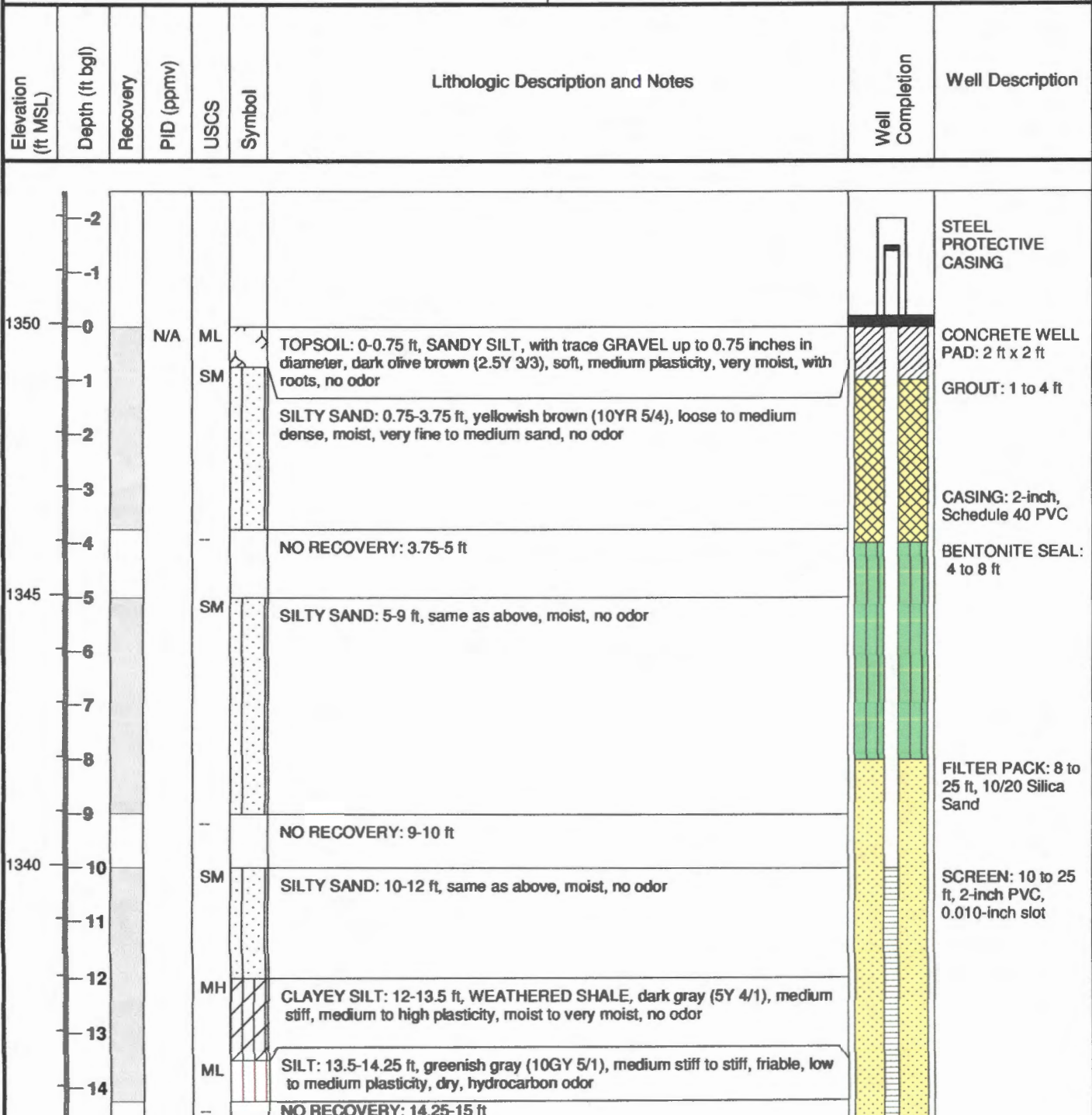
Drilling Equipment: Geoprobe 6620 DT

Drilling Method: Hollow Stem Auger

Sampling Method: DPT

Borehole Diameter: 8.5 inch

Dates Drilled: 4/27/09-4/29/09



Elevation (ft MSL)	Depth (ft bgl)	Recovery	PID (ppmv)	USCS	Symbol	Lithologic Description and Notes	Well Completion	Well Description
1335	15				ML	SILT: 15-18.5 ft, same as above, hydrocarbon odor		
	16					16-17.25 ft, reddish brown (5YR 4/3), friable, nonplastic, dry, hydrocarbon odor		
	17					17.5-17.7 ft, white precipitate zone		
	18					17.75-18.25 ft, greenish gray (10GY 5/1), hard, low to medium plasticity, dry, hydrocarbon odor		
	19					18.25-18.5 ft, light yellowish brown (2.5Y 6/3), hard, nonplastic to low plasticity, dry, no odor		
	20				ML	NO RECOVERY: 18.5-20 ft		
1330	21					SILT: 20-24 ft, olive (5Y 4/3), stiff to hard, low to medium plasticity, moist, strong hydrocarbon odor		
	22					22.25 ft, grades dry		
	23					24 ft, grades hard		
	24					NO RECOVERY: 24-25 ft		
1325	25					25 ft, refusal Borehole Total Depth = 25 ft bgs Well Total Depth = 25 ft bgs		
	26					* PID was not functioning properly.*		
	27							