

MW-28

Check: ☒ White Copy, ☐ Blue Copy, ☐ Pink Copy

Well ID: MW-28

Total Depth: 20 ft bgs

PROJECT INFORMATION

Project Name: Former Unocal Chemical Distribution Facility

Location: Wichita, KS

Logged By: Kim Nguyen

Project Manager: Derek Peacock

Ground Surface Elevation (ft, MSL): 1349.13

Top of Casing Elevation (ft, MSL): 1352.16

Coordinates: N1709936.79 E1656359.41

DRILLING INFORMATION

Drilling Company: PSA Environmental

Driller: Aaron Butler

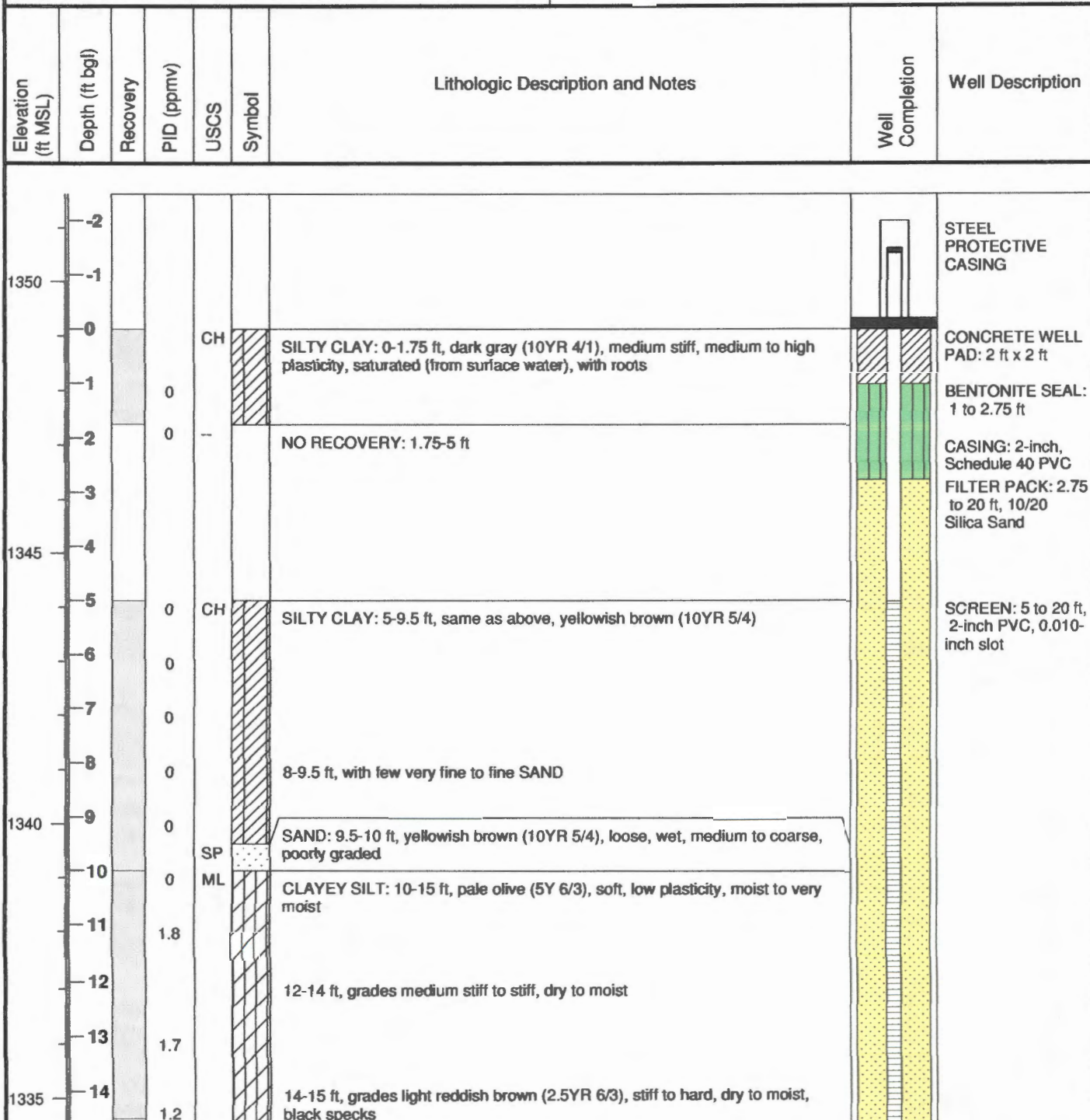
Drilling Equipment: Geoprobe 6620 DT

Drilling Method: Hollow Stem Auger

Sampling Method: DPT

Borehole Diameter: 8.5 inch

Dates Drilled: 4/27/09-4/28/09



Elevation (ft MSL)	Depth (ft bgl)	Recovery	PID (ppmv)	USCS	Symbol	Lithologic Description and Notes	Well Completion	Well Description
1330	15				SP	SAND: 15-16.5 ft, light yellowish brown (10YR 6/4), loose to medium dense, wet, medium to very coarse		
	16							
	17				ML	CLAYEY SILT: 16.5-18.25 ft, WEATHERED SHALE, with medium to coarse SAND, olive (5Y 5/3), medium stiff to stiff, low plasticity, moist		
	18					17.25-18.25 ft, with no SAND, dry		
	19					SHALE: 18.25-20 ft, reddish brown, stiff to hard, friable, dry		
	20					19-20 ft, dark gray (5Y 4/1), hard, friable, dry		
	21					20 ft. refusal Borehole Total Depth = 20 ft bgs Well Total Depth = 20 ft bgs		
	22					*Sample was stuck in sampler and extracted from 10-20 ft. The 10-20 ft sample description is general and approximate.*		