

WATER WELL RECORD Form WWC-5☐ Original Record ☐ Correction ☐ Change in Well Use

Division of Water
Resources App. No.

Well ID

[illegible]

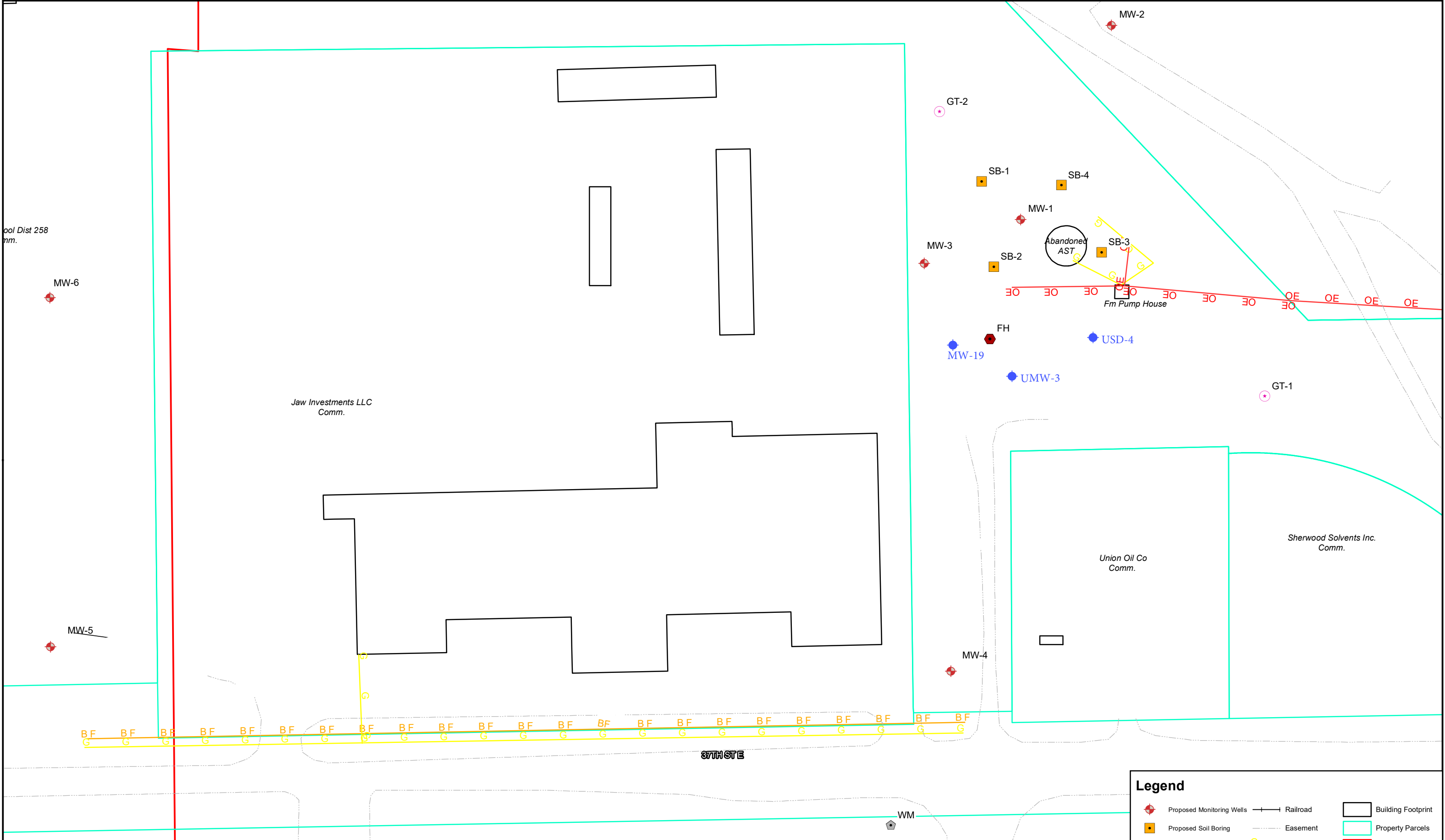


	FIGURE: 2.0	FIGURE NAME: Site Base Map	Wichita Public Schools 3850 N. Hydraulic Wichita, KS KDHE#: A2-087-40497	<div>Feet</div> <div>080</div> <div>1 in = 80 feet</div> <div>N</div>
	DATE: 07/29/20	PROJECT NUMBER: 2074056		
	DRAWN BY: CN	PROJECT MANAGER: A.Chadd		

Legend

- Proposed Monitoring Wells
- Proposed Soil Boring
- Fire Hydrant
- Proposed Geotech
- Water Meter
- Existing Monitoring Wells
- Railroad
- Easement
- Gas
- Buried Fiber
- Overhead Electric
- Building Footprint
- Property Parcels
- Site Boundary

ALL BOUNDARIES AND LOCATIONS ARE APPROXIMATE