

Gift From
Claude Crowder

9-26-24E

George Holy Farm

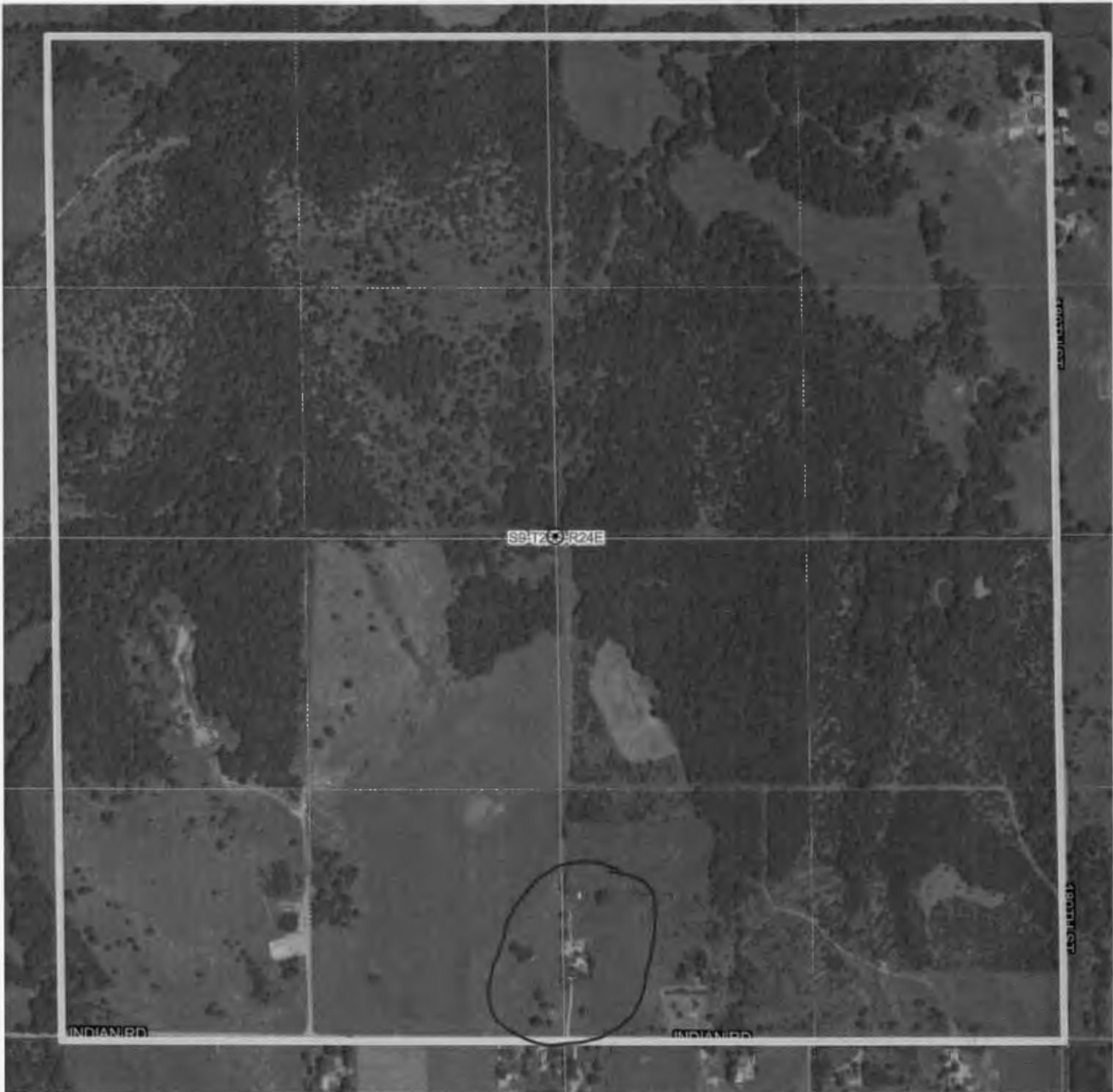
Water Well

SE $\frac{1}{4}$ SW $\frac{1}{4}$ Sec. 9-26-24E
Bourbon County, Kansas
Drilled by Cyr Drilling Co.
1946

1	Earth	1
2	Lime boulder s	3
4	Clay	7
1	Lime	8
2	Clay	10
28	Lime	38
5	Black shale	43
24	Blue shale	67
18	Grey shale	85
6	Slate co dd	91
18	Lime	109
6	slate	115
5	Lime	120
5	Dark shale	125
5	Grey shale- water	130

8" hole drilled
10' 8 $\frac{1}{4}$ " drive pipe

Drilled by Neal Howard
July 1946



Section 9, township 26, range 24E
Bourbon County