

WATER WELL RECORD Form WWC-5

☐ Original Record ☐ Correction ☐ Change in Well Use

Division of Water
Resources App. No.

Well ID

[illegible]

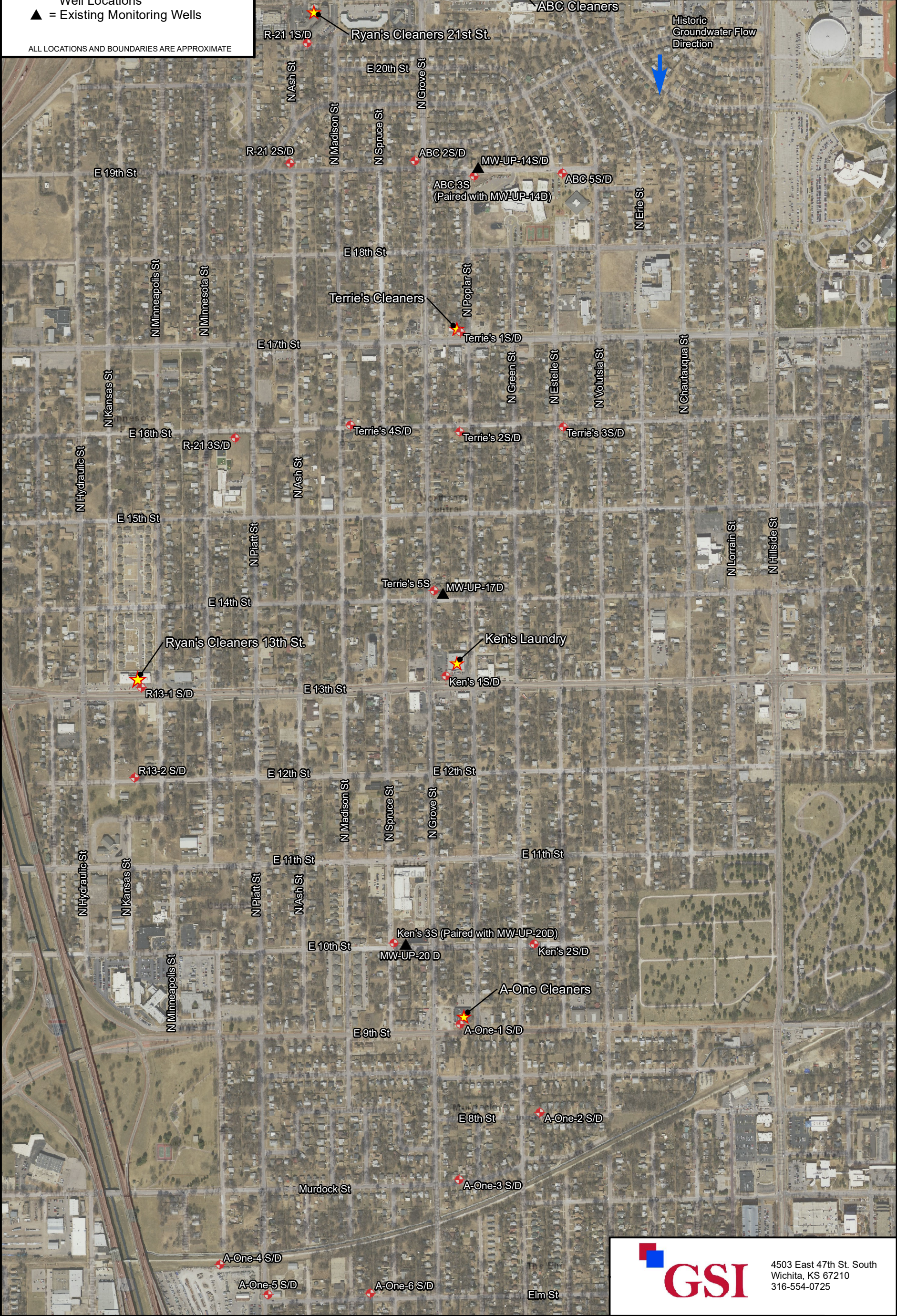
Legend

- ★ = Dry Cleaner Sites
- ⊕ = Proposed Monitoring Well Locations
- ▲ = Existing Monitoring Wells

ALL LOCATIONS AND BOUNDARIES ARE APPROXIMATE

-
- This aerial map displays a residential area in Minneapolis, Minnesota. The map is oriented with North at the top. A red star with a black outline marks the location of Ryan's Cleaners, which is situated at the intersection of E 15th St and N Minneapolis St. A black line connects the text 'Ryan's Cleaners' to this star. Other streets shown include E 19th St, E 16th St, E 14th St, N Kansas St, N Hydraulic St, and N Minnesota St. Property addresses R-21 3S/D, R13-1 S/D, and R13-2 S/D are also labeled. The map shows a grid of streets with houses and some commercial buildings. A large highway (I-94) is visible on the left side of the map.

SITE BASE MAP WITH
PROPOSED MONITORING
WELL LOCATIONS



PROJECT #: 1874235	DRAWN BY: CD	FIGURE 2
DATE: 2019-01-10	PROJ. MNGR: KW	

19th & Grove Dry Cleaners Sites
Wichita, Kansas