

**WATER WELL RECORD      Form WWC-5**

☐ Original Record    ☐ Correction    ☐ Change in Well Use

Division of Water  
Resources App. No.

Well ID

[illegible]



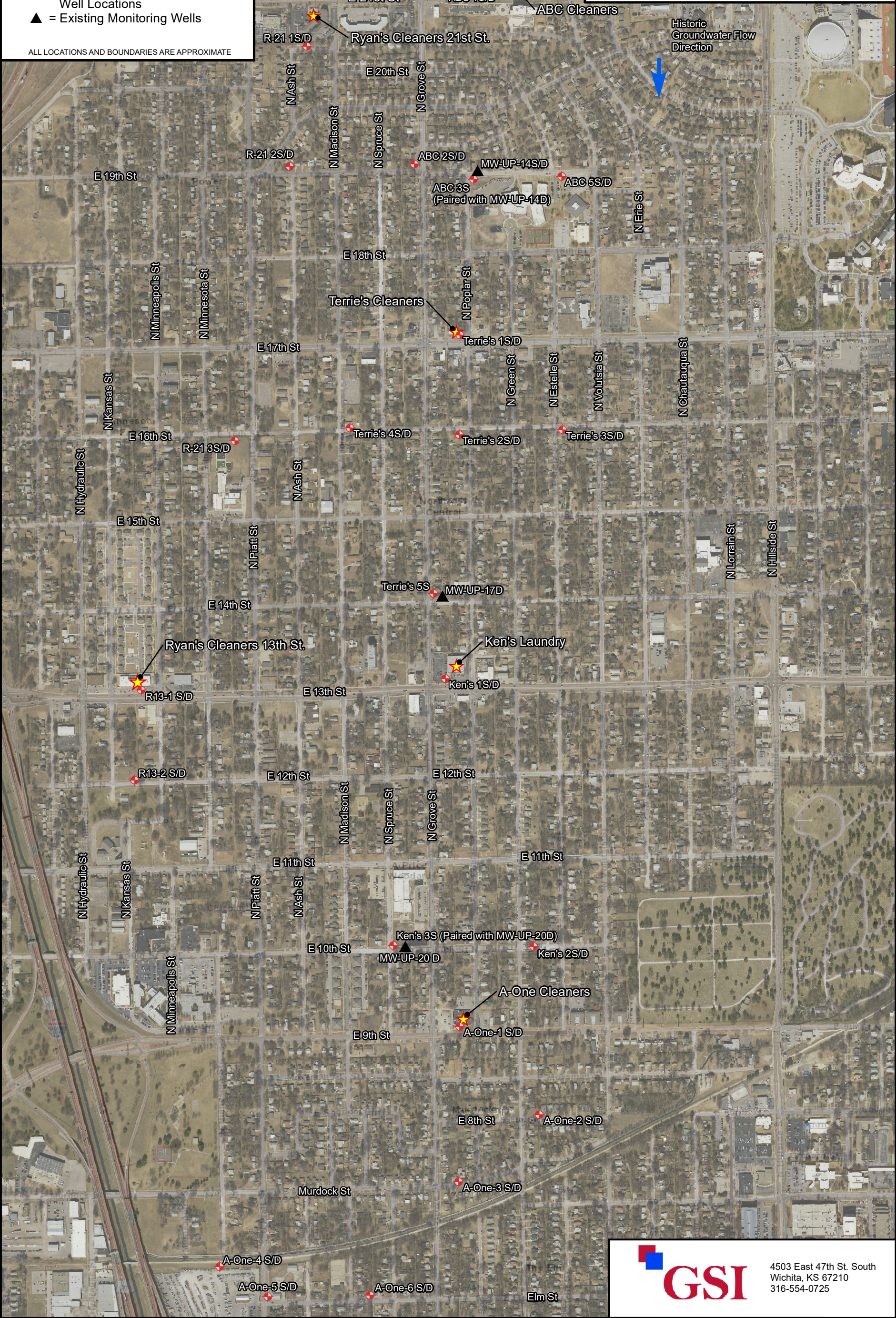
## Legend

- ★ = Dry Cleaner Sites
- ⛔ = Proposed Monitoring Well Locations
- ▲ = Existing Monitoring Wells

ALL LOCATIONS AND BOUNDARIES ARE APPROXIMATE

- 
- This aerial map displays a residential area in Minneapolis, Minnesota. The map is oriented with North at the top. A grid of streets is visible, including E 19th St, E 16th St, E 15th St, and E 14th St running horizontally, and N Kansas St, N Hydraulic St, N Minneapolis St, and N Minnesota St running vertically. A red star with a black outline marks the location of Ryan's Cleaners, which is situated at the intersection of E 15th St and N Minneapolis St. Other labeled locations include R-21 3S/D, R13-1 S/D, and R13-2 S/D. The map also shows a large highway interchange at the bottom left and various residential buildings and green spaces throughout the neighborhood.

SITE BASE MAP WITH  
PROPOSED MONITORING  
WELL LOCATIONS



|                       |                   |                 |
|-----------------------|-------------------|-----------------|
| PROJECT #:<br>1874235 | DRAWN BY:<br>CD   | FIGURE<br><br>2 |
| DATE:<br>2019-01-10   | PROJ. MNGR:<br>KW |                 |

19th & Grove Dry Cleaners Sites  
Wichita, Kansas

FIGURE  
2