

**WATER WELL RECORD      Form WWC-5**☐ Original Record    ☐ Correction    ☐ Change in Well Use

Division of Water  
Resources App. No.

Well ID

[illegible]



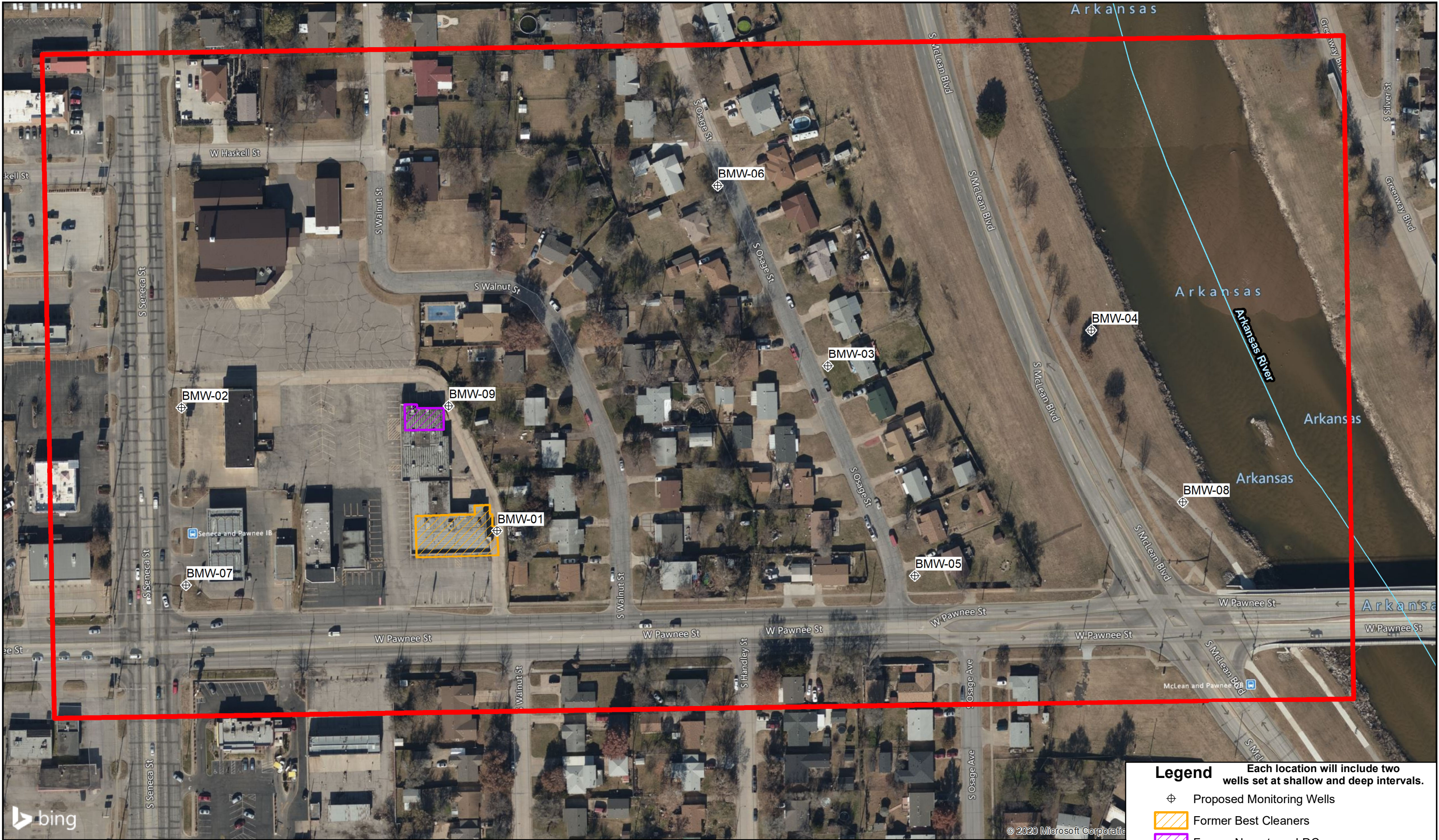


	FIGURE: <b>2.0</b>	FIGURE NAME: <b>Proposed Monitoring Wells Locations</b>	Best Cleaners-Pawnee Wichita, KS KDHE#: C2-087-73035	<div>0      60      120</div> <div>Feet</div> <div></div>	<b>Legend</b> Each location will include two wells set at shallow and deep intervals. <div>⊕ Proposed Monitoring Wells</div> <div> Former Best Cleaners</div> <div> Former Norgetown LDC</div> <div> Site Study Area</div> <div> Kansas Hydrology FlowLines</div> ALL BOUNDARIES AND LOCATIONS ARE APPROXIMATE	
	DATE: <b>01/04/2021</b>	PROJECT NUMBER: <b>2074106</b>				
	DRAWN BY: <b>PM</b>	PROJECT MANAGER: <b>M.Balleau</b>				