

WATER WELL RECORD

Form WWC-5

Division of Water Resources App. No.

Well ID

MW7

Original Record Correction Change in Well Use

1 LOCATION OF WATER WELL: County Sedgwick Fraction NE 1/4 NE 1/4 NW 1/4 NE 1/4 Section Number 7 Township Number T 27 S Range Number R 1 E W

2 WELL OWNER: Last Name: KDHE Business: KDHE Address: 1000 SW Jackson Blvd City Topoka State: KS ZIP: 66612 3 LOCATE WELL WITH "X" IN SECTION BOX: [Diagram] 4 DEPTH OF COMPLETED WELL: 24 ft 5 Latitude: 37.72240 Longitude: 97.35937

7 WELL WATER TO BE USED AS: 1 Domestic: Household Lawn & Garden Livestock Irrigation Feedlot Industrial 2 Public Water Supply: well ID 3 Dewatering: how many wells? 4 Aquifer Recharge: well ID 5 Monitoring: well ID MW7 6 Environmental Remediation: well ID 7 Air Sparge 8 Soil Vapor Extractor 9 Recovery 10 Injection 10 Oil Field Water Supply: lease 11 Test Hole: well ID 12 Geothermal: How many bores?

Was a chemical/bacteriological sample submitted to KDHE? Yes No Water well disinfected? Yes No If yes, date sample was submitted:

8 TYPE OF CASING USED: Steel PVC Other CASING JOINTS: Glued Clamped Welded Threaded Casing diameter 2 in. to 9 ft. Diameter in. to ft. Casing height above land surface -0.40 in. Weight lbs./ft. Well thickness or gauge No TYPE OF SCREEN OR PERFORATION MATERIAL: Steel Stainless Steel Fiberglass PVC Brass Galvanized Steel Concrete tile None used (open hole) SCREEN OR PERFORATION OPENINGS ARE: Continuous Slot Mill Slot Gauze Wrapped Torch Cut Drilled Holes Louvered Shutter Key Punched Wire Wrapped Saw Cut None (Open Hole) SCREEN-PERFORATED INTERVALS: From 9 ft. to 24 ft. GRAVEL PACK INTERVALS: From 7 ft. to 24 ft.

9 GROUT MATERIAL: Neat cement Cement grout Bentonite Other Concrete: 0-0.3' Grout intervals: From 0.3 ft. to 7 ft. From ft. to ft. From ft. to ft.

Nearest source of possible contamination: Septic Tank Lateral Lines Pit Privy Livestock Pens Insecticide Storage Sewer Lines Cess Pool Sewage Lagoon Fuel Storage Abandoned Water Well Watertight Sewer Lines Seepage Pit Feedyard Fertilizer Storage Oil Well / Gas Well Other (Specify) Direction from well? Unknown Distance from well? Unknown ft

10 FROM TO LITHOLOGIC LOG FROM TO LITHO. LOG (cont.) or PLUGGING INTERVALS

11 CONTRACTOR'S OR LANDOWNER'S CERTIFICATION: This water well was constructed reconstructed or plugged under my jurisdiction and was completed on (mo-day-year) 7/7/20 and this record is true to the best of my knowledge and belief. Kansas Water Well Contractor's License No 757 This Water Well Record was completed on (mo-day-year) 8/17/20 under the business name of Larsen & Associates, Inc. Signature

# DENNIS L HANDKE

1820 NW 59th Terrace  
TOPEKA, KANSAS 66618  
785-286-4047 Home

Jess Chapman  
Larsen & Associates  
1311 E. 25<sup>th</sup> Street, Suite B  
Lawrence, Kansas, 66046

July 29, 2020

RE: Monitor Well Elevation Survey  
1705 W. 21<sup>st</sup>. St. Wichita, Kansas

Proj. 20-00KK  
Herman Oil  
U2-087-15223

Bench Mark: Chisled Square on NE corner of concrete sign base at NE corner of property.  
Elev: 1313.49      North 5312      West 1668      (from SE Cor. Sec. 7-27-1E)

MW-1	rim	1314.03	North	5203	NW1/4,NE1/4,NW1/4,NE1/4
	top pipe	1313.74	West	1664	Lat= 37.72222    Long = 97.35768
MW-2	rim	1313.93	North	5251	NW1/4,NE1/4,NW1/4,NE1/4
	top pipe	1313.64	West	1663	Lat= 37.72236    Long = 97.35968
MW-3	rim	1314.74	North	5238	NW1/4,NE1/4,NW1/4,NE1/4
	top pipe	1314.44	West	1801	Lat= 37.72232    Long = 97.36016
MW-4	rim	1314.73	North	5119	NW1/4,NE1/4,NW1/4,NE1/4
	top pipe	1314.46	West	1715	Lat= 37.72199    Long = 97.35986
MW-5	rim	1315.01	North	5050	NE1/4,NE1/4,NW1/4,NE1/4
	top pipe	1314.79	West	1581	Lat= 37.72181    Long = 97.35940
MW-6	rim	1314.04	North	5436	SW1/4,SE1/4,SW1/4,SE1/4 (Sec. 6-27-1E)
	top pipe	1313.74	West	1850	Lat= 37.72286    Long = 97.36033
MW-7	rim	1314.20	North	5266	NE1/4,NE1/4,NW1/4,NE1/4
	top pipe	1313.80	West	1573	Lat= 37.72240    Long = 97.35937
MW-8	rim	1314.30	North	5166	NE1/4,NE1/4,NW1/4,NE1/4
	top pipe	1314.03	West	1566	Lat= 37.72212    Long = 97.35934

Lat & Long derived from Wichita East 7.5' quad map. WGS 84.

Elevation established from City of Wichita BM 21<sup>st</sup> & Benjamin. NAVD 88

If you have any questions, please feel free to call me. Thank you for the opportunity to be of service to you.

Dennis L Handke R.L.S.

July 29, 2020

U-735

Dennis L Handke

LAND SURVEYOR

RECEIVED

SEP 02 2020

BUREAU OF WATER

Sedgwick

6-27-1E  
7-27-1E

NOTE: Figures exhibited within this report are only to be used within the context of this report. Placement of property lines, wells, structures, and roads is based on the available information from county appraiser maps, surveys, site visits, and/or previous vendor reports and should be considered approximate.

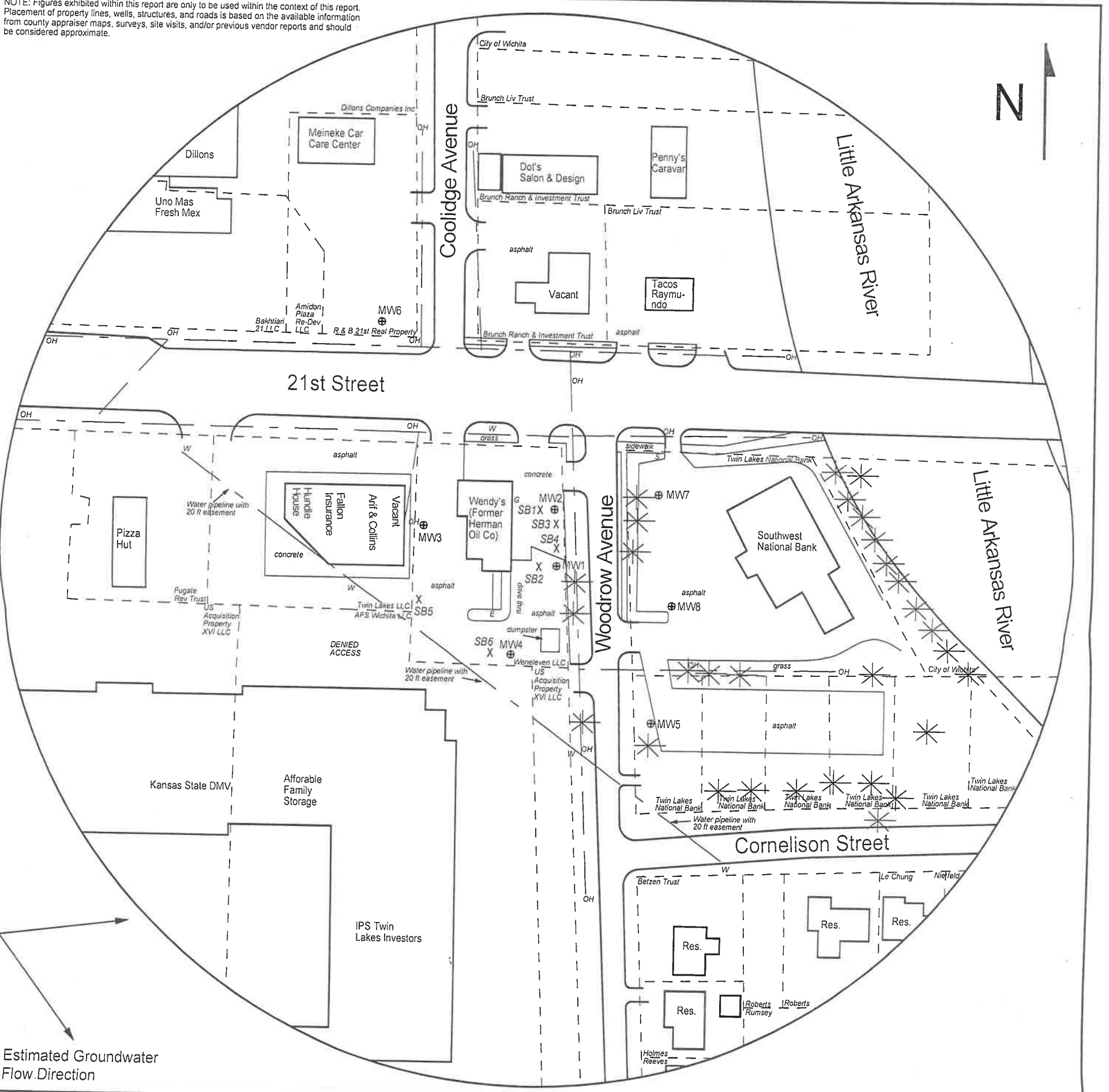


FIGURE 2.2 - 500 FT RADIUS AREA BASE MAP

LEGEND

- Approximate Location of Property Line
- ⊕ Monitoring Well (Installed 7/6-9/20)
- X Soil Boring (Drilled 7/8-9/20)
- G Gas Meter
- s Sewer Inlet
- E --- Electric Lines (1.5 - 3 ft bgs)
- OH --- Overhead Lines (25'-40' high)
- W --- Water Lines (1.5 - 3 ft bgs)

NOTE: SB5 & SB6 will be drilled to collect hydrologic samples.  
NOTE: Utility depths, heights and locations are approximate.



PROJECT:  
Herman Oil Co.  
1705 W. 21st St.  
Wichita, KS  
KDHE ID: U2-087-15223  
Date: 7/9/20



1311 E 25th St., Suite B 785-841-8707 office  
Lawrence, KS 66046 785-865-4282 fax