

WATER WELL RECORD Form WWC-5

Division of Water Resources App. No.

Well ID NMW-36DR

Original Record Correction Change in Well Use

1 LOCATION OF WATER WELL: County: Sedgwick Fraction NE 1/4 NE 1/4 SE 1/4 NE 1/4 Section Number 4 Township Number T 27 S Range Number R 1 E W

2 WELL OWNER: Last Name: Business: City of Wichita Address: 455 Main St. City: Wichita State: KS ZIP: 67202 Street or Rural Address where well is located: 2645 N. New York St. Wichita, KS 67219

3 LOCATE WELL WITH 'X' IN SECTION BOX: N W E S 1 mile

4 DEPTH OF COMPLETED WELL: 37.5 ft. Depth(s) Groundwater Encountered: 1) 16 ft. 2) 16.07 ft. WELL'S STATIC WATER LEVEL: 16.07 ft. below land surface, measured on (mo-day-yr) 8/21/2020

5 Latitude: 37.73314 (decimal degrees) Longitude: 97.31828 (decimal degrees) Datum: WGS 84

6 Elevation: 1318 ft. Ground Level TOC Source: Other KOLAR

7 WELL WATER TO BE USED AS: 1. Domestic: Household, Lawn & Garden, Livestock, Irrigation, Feedlot, Industrial. 5. Public Water Supply: well ID. 6. Dewatering: how many wells? 7. Aquifer Recharge: well ID. 8. Monitoring: well ID NMW-36DR. 9. Environmental Remediation: well ID. 10. Oil Field Water Supply: lease. 11. Test Hole: well ID. 12. Geothermal: how many bores? 13. Other (specify):

Was a chemical/bacteriological sample submitted to KDHE? No If yes, date sample was submitted: Water well disinfected? No

8 TYPE OF CASING USED: Steel PVC Other CASING JOINTS: Threaded Casing diameter 1.25 in. to 27.5 ft., Diameter 27.5 in. to 40 ft., Diameter 40 in. to 40 ft., Diameter 40 in. to 40 ft. Casing height above land surface 0 in. Weight lbs./ft. Wall thickness or gauge No. 40

TYPE OF SCREEN OR PERFORATION MATERIAL: Steel Stainless Steel PVC Other (Specify) Brass Galvanized Steel None used (open hole)

SCREEN OR PERFORATION OPENINGS ARE: Continuous Slot Mill Slot Gauze Wrapped Torch Cut Drilled Holes Other (Specify) Louvered Shutter Key Punched Wire Wrapped Saw Cut None (Open Hole) SCREEN-PERFORATED INTERVALS: From 27.5 ft. to 37.5 ft., From 37.5 ft. to 40 ft., From 40 ft. to 40 ft., From 40 ft. to 40 ft. GRAVEL PACK INTERVALS: From 23.5 ft. to 37.5 ft., From 37.5 ft. to 40 ft., From 40 ft. to 40 ft., From 40 ft. to 40 ft.

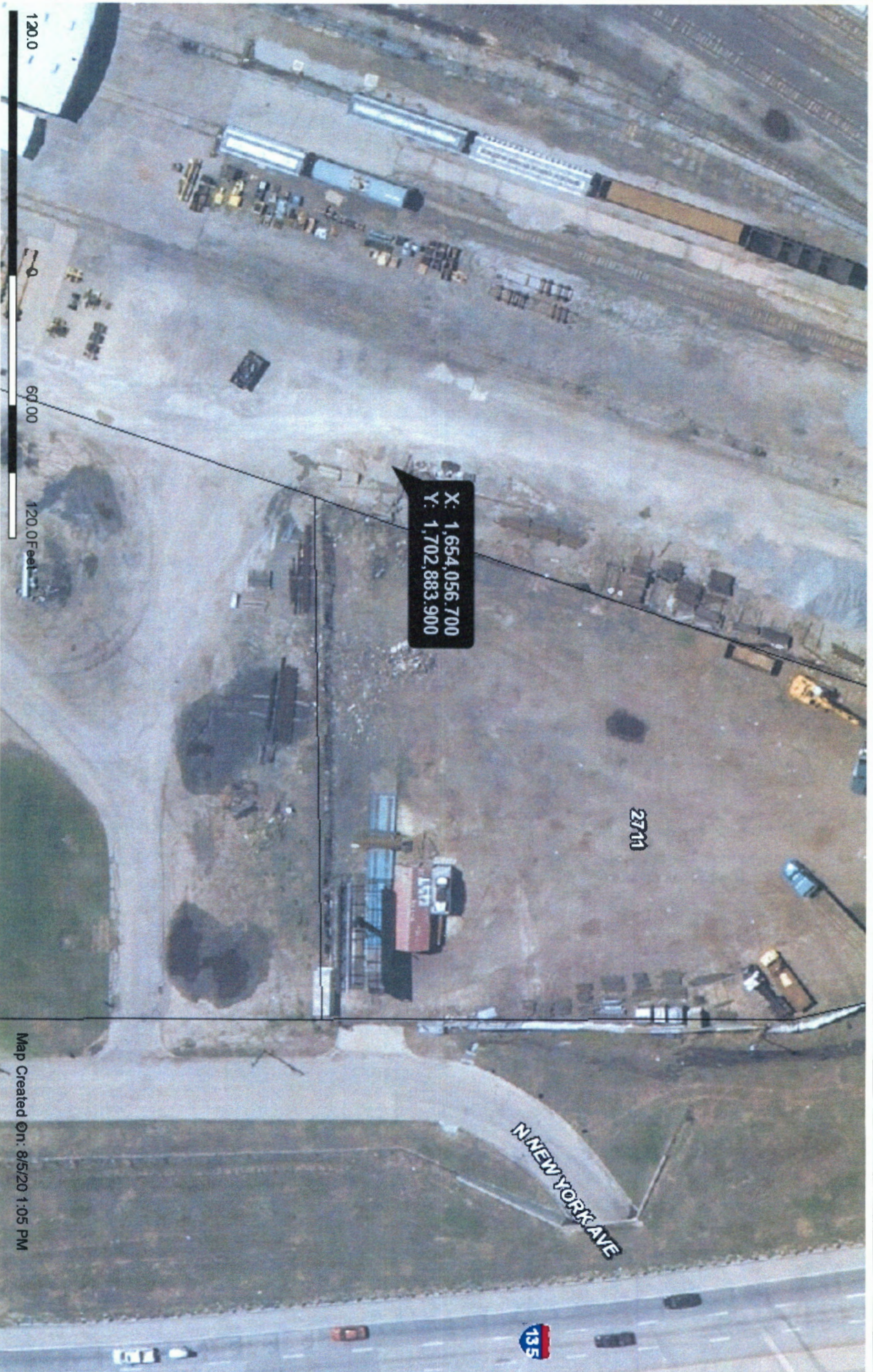
9 GROUT MATERIAL: Neat cement Cement grout Bentonite Other Grout Intervals: From 2 ft. to 23.5 ft., From 23.5 ft. to 37.5 ft., From 37.5 ft. to 40 ft., From 40 ft. to 40 ft. Nearest source of possible contamination: No potential source of contamination within 200 ft. Septic Tank Lateral Lines Pit Privy Livestock Pens Insecticide Storage Sewer Lines Cess Pool Sewage Lagoon Fuel Storage Abandoned Water Well Watertight Sewer Lines Seepage Pit Feedyard Fertilizer Storage Oil Well/Gas Well Other (Specify) Industrial Property Direction from well? W Distance from well? 1000 ft.

Table with 6 columns: 10 FROM, TO, LITHOLOGIC LOG, FROM, TO, LITHO. LOG (cont.) or PLUGGING INTERVALS. Rows: 0-13 Silty Clay, 13-25 Sand, 25-31 Clay, 31-37 Sand, 37-40 Weathered Shale

Notes:

11 CONTRACTOR'S OR LANDOWNER'S CERTIFICATION: This water well was constructed, reconstructed, or plugged under my jurisdiction and was completed on (mo-day-year) 8/11/2020 and this record is true to the best of my knowledge and belief. Kansas Water Well Contractor's License No. 710 This Water Well Record was completed on (mo-day-year) 8/24/2020 under the business name of Below Ground Surface, Inc.





Sedgwick 4-27-1E

This information is not an official record, and cannot be used as such. The user should rely only upon official records available from the custodian of records in the appropriate City and/or County department. Some data provided here and used for the preparation of these maps has been obtained from public records not created or maintained by the City of Wichita.

Map Created On: 8/5/20 1:05 PM

1:720