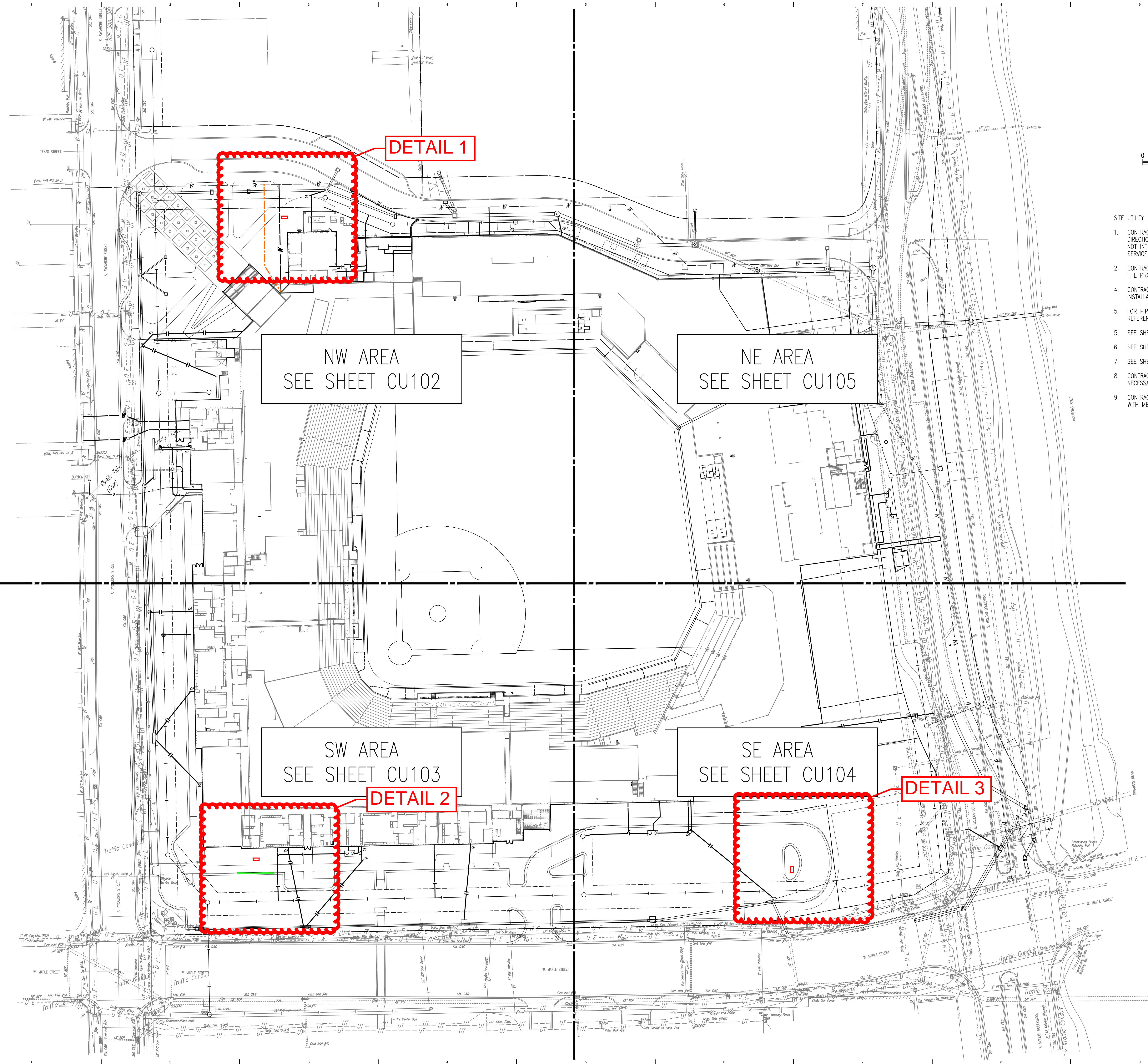
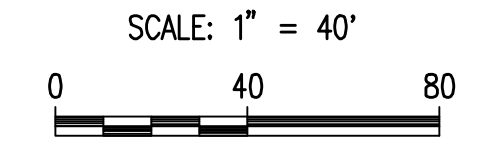




Save: 6-20-2019 3:33:05 PM by CSJ  
U:\Wichita\_Feb2019\18077\0000\PEC\DWG\18077-0000-CU101



MABCD REVIEW  
STAMP LOCATION



**SITE UTILITY NOTES**

1. CONTRACTOR SHALL BE RESPONSIBLE FOR OPEN CUTTING, BORING, OR DIRECTIONAL DRILLING ALL PROPOSED UTILITY CROSSINGS. CONTRACTOR SHALL NOT INTERRUPT OR DISCONNECT ANY PERMANENT OR TEMPORARY EXISTING SERVICE WITHOUT PRIOR APPROVAL FROM OWNER.
2. CONTRACTOR SHALL BE RESPONSIBLE FOR COORDINATING THE CONSTRUCTION OF THE PROPOSED GAS LINES WITH KANSAS GAS SERVICES.
4. CONTRACTOR SHALL VERIFY METER LOCATIONS WITH THE CITY PRIOR TO INSTALLATION.
5. FOR PIPE CONNECTIONS TO BUILDING AND GREASE INTERCEPTOR DETAILS, REFERENCE MECHANICAL PLANS.
5. SEE SHEETS CU237-CU239 FOR WATERLINE DETAILS
6. SEE SHEETS CU209-CU210 FOR SANITARY SEWER DETAILS
7. SEE SHEETS CU258-CU266 FOR STORM SEWER DETAILS
8. CONTRACTOR SHALL BE RESPONSIBLE FOR ALL PIPE, FITTINGS, ADAPTORS, ETC. NECESSARY TO COMPLETE SITE UTILITY CONNECTIONS.
9. CONTRACTOR SHALL BE RESPONSIBLE FOR COORDINATING BUILDING CONNECTIONS WITH MECHANICAL PLANS.

NW AREA  
SEE SHEET CU102

NE AREA  
SEE SHEET CU105

SW AREA  
SEE SHEET CU103

SE AREA  
SEE SHEET CU104

SJCF ARCHITECTURE | DLR GROUP | PEC, P.A.  
JE DUNN CONSTRUCTION | EBY CONSTRUCTION  
A DESIGN BUILD TEAM



**CITY OF WICHITA**  
Entertainment Venue and  
Multi - Sport Stadium  
300 Sycamore St.  
Wichita, KS 67213

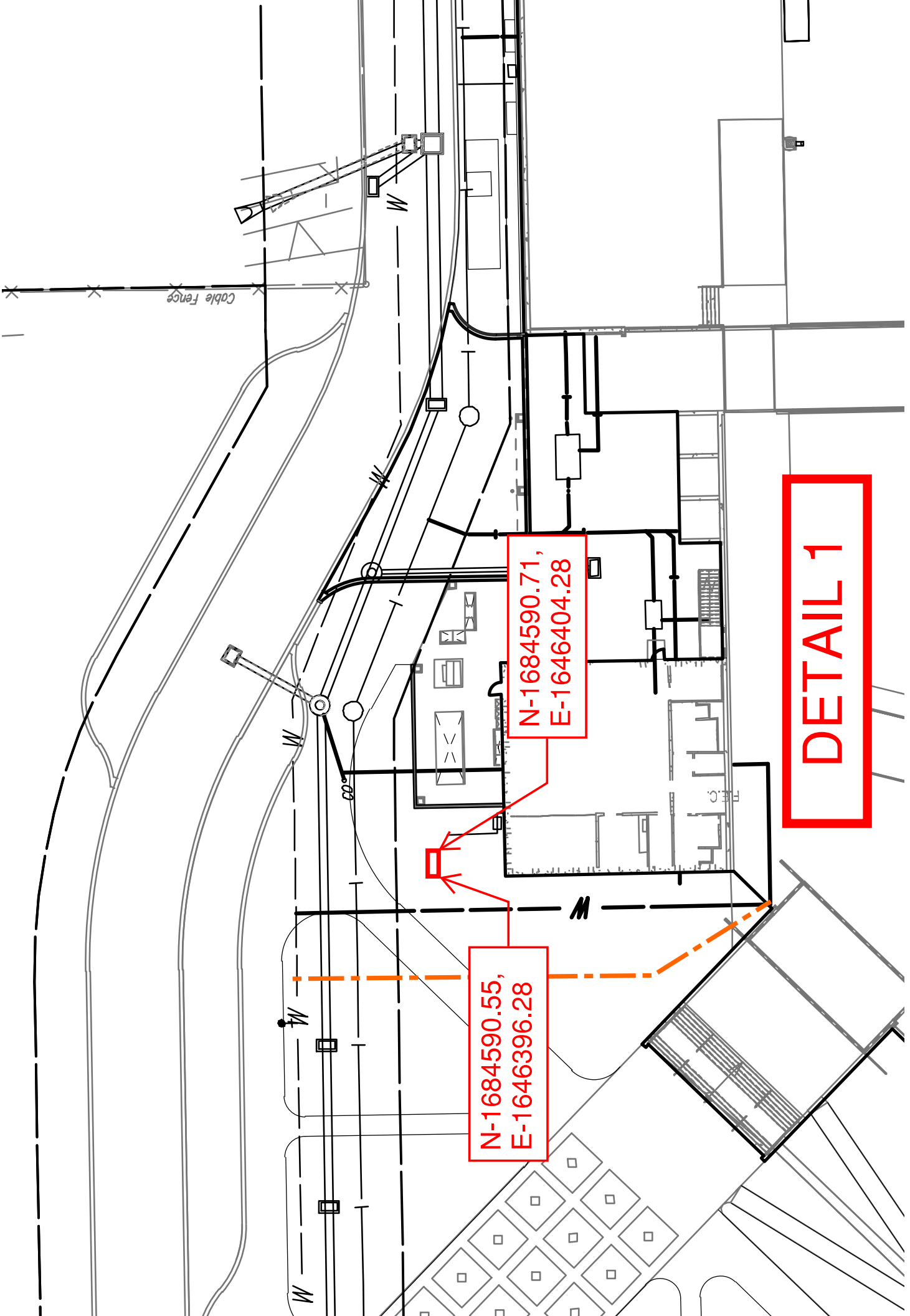
©2019  
Schafer Johnson Cox Frey Architecture, Inc.  
All Rights Reserved.  
These drawings and their contents, including, but not limited to, all concepts, designs, & ideas are the exclusive property of Schafer Johnson Cox Frey (SJCFF), and may not be used or reproduced in any way without the express consent of SJCFF.

REVISIONS	
19	CPR20 06/21/19

PROJECT NUMBER	XXXX.XX
INITIAL RELEASE DATE	05/07/19
SITE UTILITY PLAN	



**CU101**

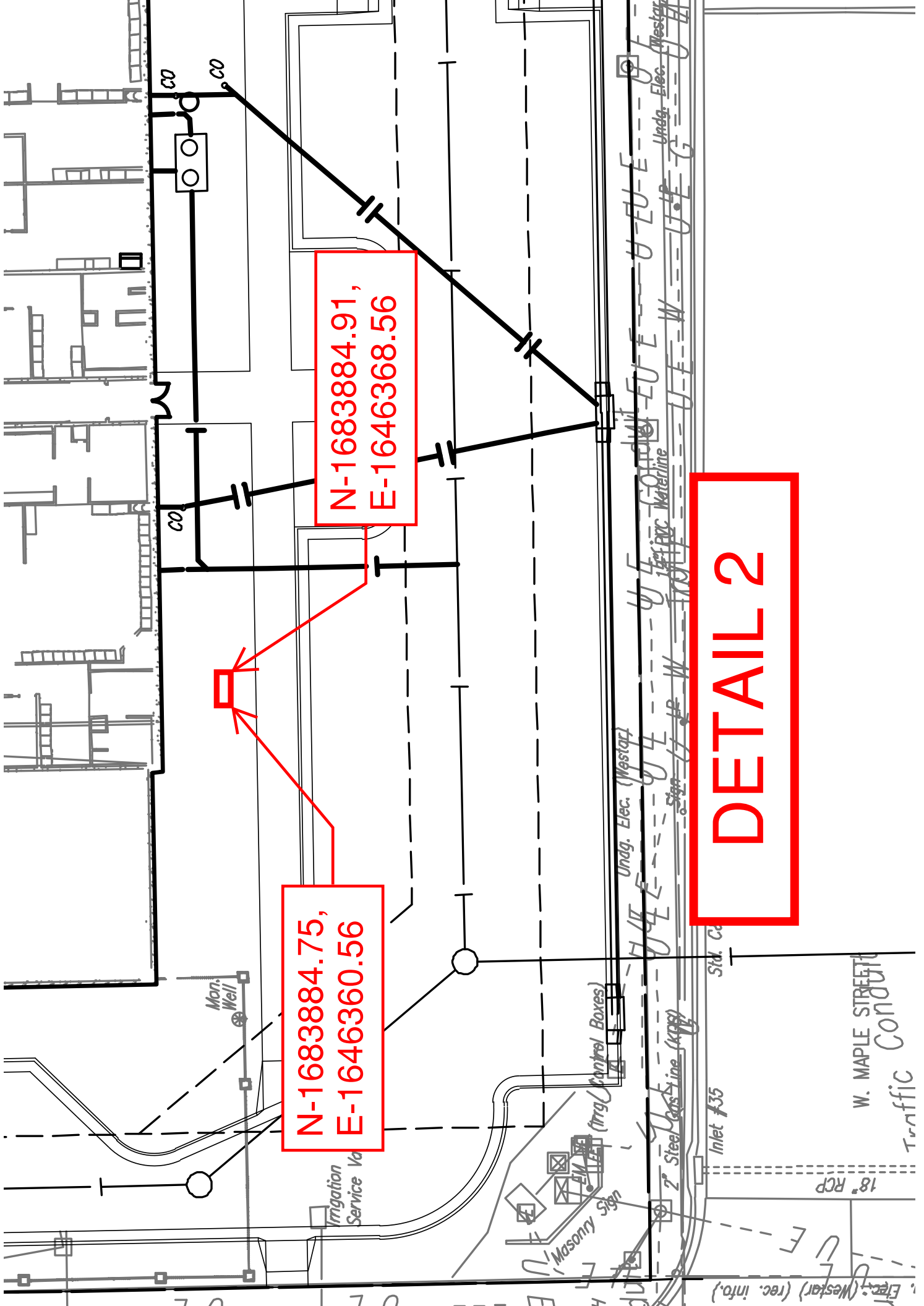


Cable Fence

N-1684590.71,  
E-1646404.28

N-1684590.55,  
E-1646396.28

DETAIL 1



N-1683884.75,  
E-1646360.56

N-1683884.91,  
E-1646368.56

DETAIL 2

N-1683878.49,  
E-1646935.27

N-1683870.49,  
E-1646935.42

**DETAIL 3**

