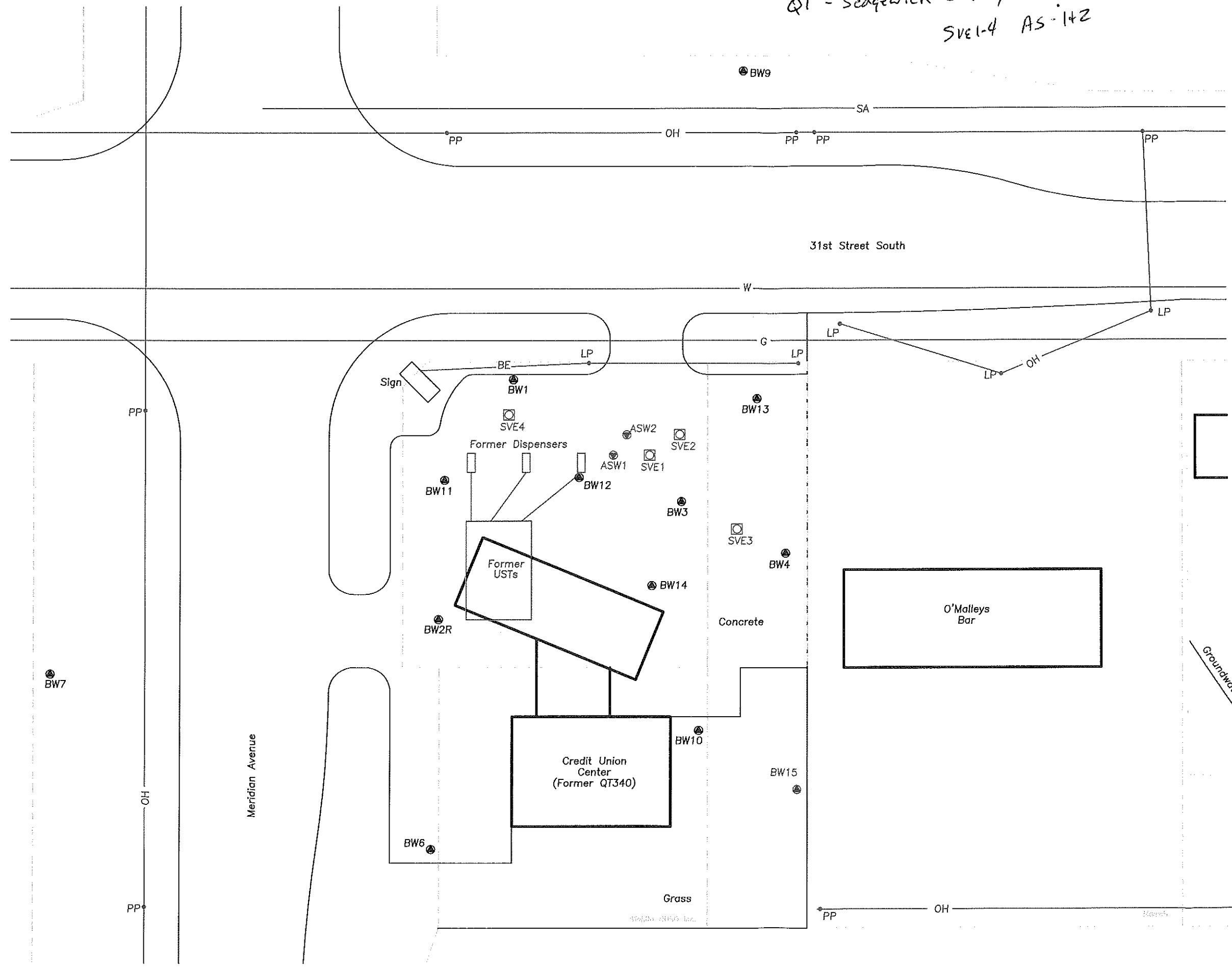


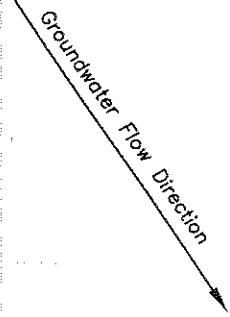
QT - Sedgewick County
SVE1-4 AS-1+2



Legend

- - Monitoring Well Location
BW1 BW15 Proposed
- - Proposed Soil Vapor Extraction Well
SVE1
- - Proposed Air Sparge Well
ASW1
- Property Line
- Property Boundary
- ST— Storm Sewer (~2' Deep)
- OH— Overhead Power Line
- SA— Sanitary Sewer Line (~4' deep)
- BT— Buried Telephone Line (~3' deep)
- W— Water Line (~4' deep)
- G— Gas Line (~3' deep)
- BE— Buried Electric Line (~2' deep)
- pp - Power Pole
- LP - Light Pole
- BP - Brace Pole
- EO - Electrical Outlet
- WM - Water Meter
- EM - Electrical Meter
- GV - Gate Valve
- SB - Steel Bollard
- TS - Traffic Signal Manhole
- SS - Sanitary Sewer
- FH - Fire Hydrant

Scale In Feet
0 40 80



Site Detail Map
 Quik Trip #340C
 Wichita, KS
 KDHE # U2-087-01013
 RDR Work Plan
 CGP Project #17805
 Prepared By: MK Date: 05-22-2017
 Reviewed By: MK Date: 05-22-2017
 Figure 2
 CGP, Inc. PO Box 23, Wahoo, NE 68066