

T.29 Rge.23E Sec 24
Crawford County

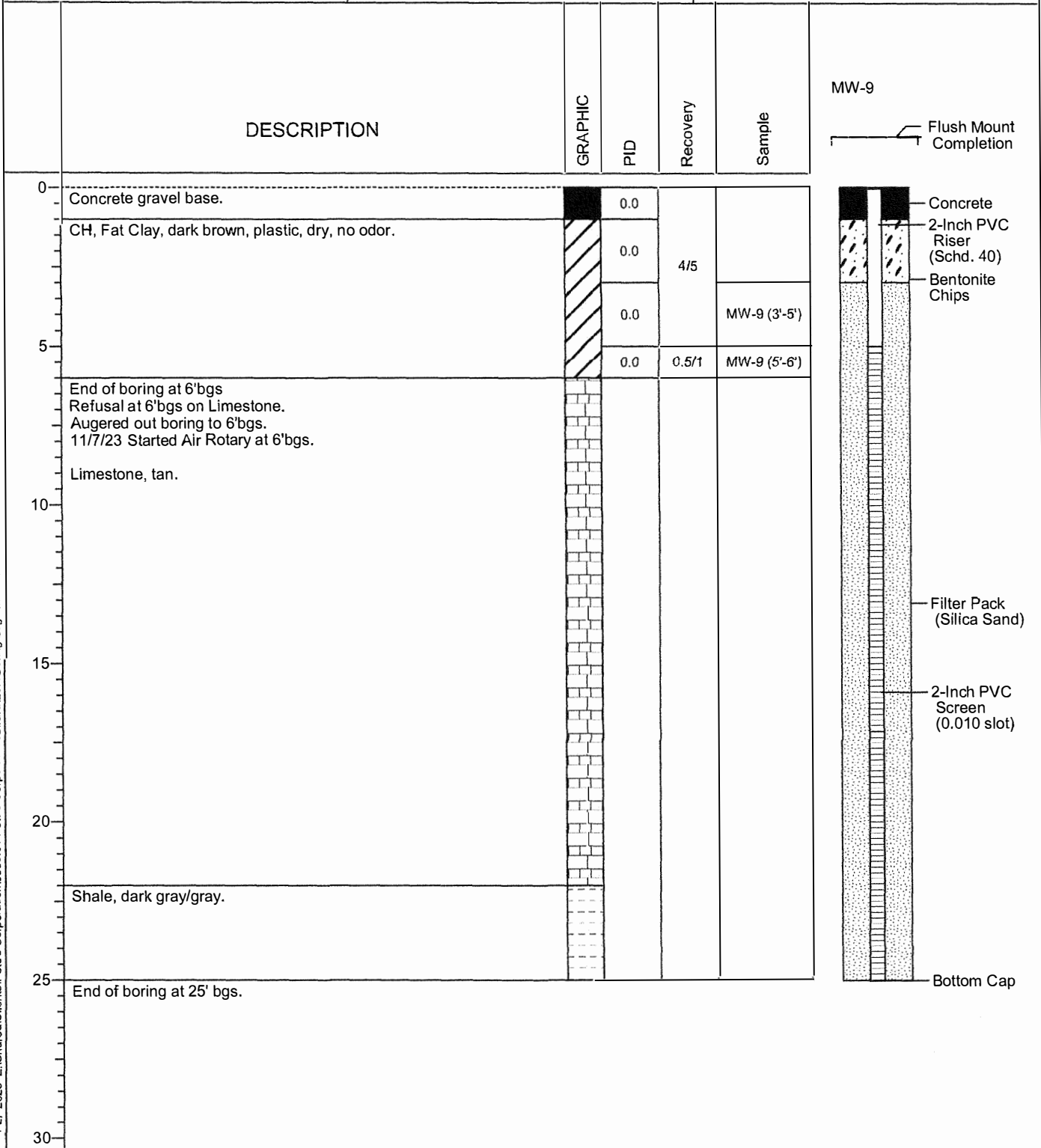


Pete's Corporation
LSA
307 W. St. John Street, Girard, Kansas
Project Number: 3539.04
KDHE Project Code: U3-019-15457

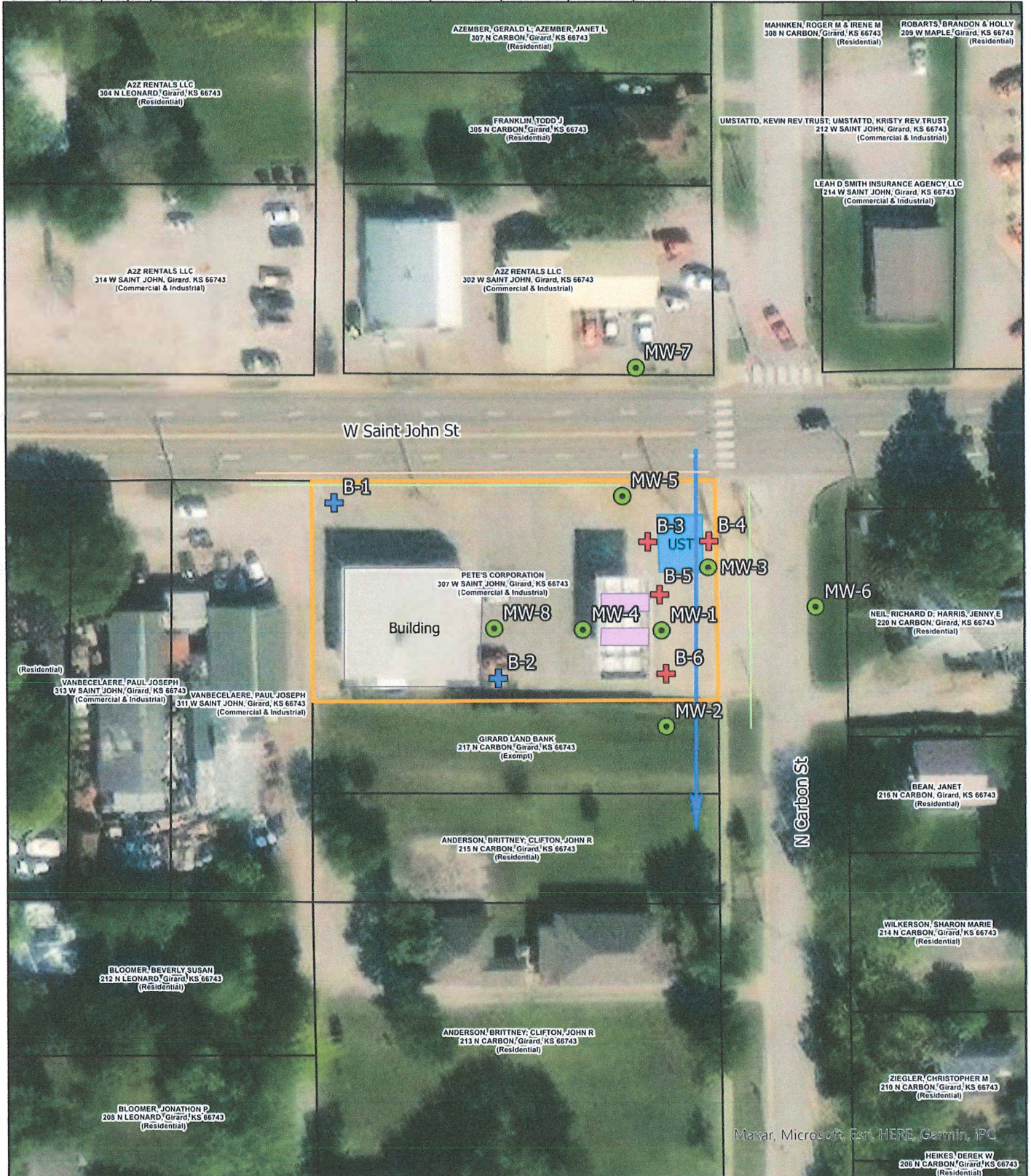
MW-9

SWL (amsl) : 980.73'
TOC Elev. (amsl) : 984.02'
Ground Elev. (amsl) : 984.24'
Plugging Material : NA
Surface Com. Mater. : NA

Date Drilled : 11/6/23
Drilling Contractor : Razek Environmental .LLC.
Driller : Tony Poulter
Site Geologist : Ben Burleson
Drill Rig : Geoprobe 7822DT
Drilling Method : DPT, Dual Tube
Sampling Method : Continuous
Borehole Dia. : 2.25inc, 3inc, 6inc
Sample Eqpt. Dia. : 1.375-inc
Sample Eqpt. Length : 5ft



11-27-2023 Z:\Shared\Clients\Pete's Corporation\3539.04 Pete's Corporation\Girard\LSA\Boring Logs\MW-9.boi



<p>FIGURE 2.2</p>	Project Mgr. TF	Date: 8/15/2023		SHEET NAME	Detailed Site Map	PROJECT NAME	Pete's Corporation - Girard
	Designed By: MO	Rev.:		PROJECT NAME	LSA	KDHE PROJECT CODE	U3-019-15457
	Drawn By: MO	Rev.:		PROJECT LOCATION	307 West St. John Street, Girard, KS	SCALE	1" = 80'
	Checked By: TF	Rev.:					
	Job No.: 3539.04	Rev.:					

- Site Boundary
- Former Dispensers
- Car Wash
- Former UST
- Building
- Parcel Boundary
- Buried Power
- Overhead Powerline
- Stormwater
- Telephone
- Water
- + Proposed Geotechnical Boring
- Proposed Monitoring Well
- + Proposed Soil Boring
- ➔ Groundwater Flow Direction

