

WATER WELL RECORD

Form WWC-5

Division of Water Resources App. No.

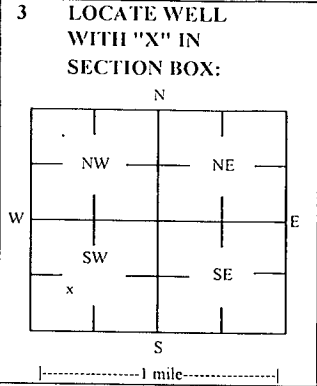
Well ID

KMW5

[X] Original Record [ ] Correction [ ] Change in Well Use

1 LOCATION OF WATER WELL: County Wilson Fraction NW 1/4 NE 1/4 SW 1/4 SW 1/4 Section Number 20 Township Number T 30 S Range Number R 16 E W

2 WELL OWNER: Last Name: Business: Greenfield Env. Multistate Trust L.L.C. Address: 1400 Village Sq. Blvd., Ste. 3-144 City Tallahassee State: FL ZIP: 32312 Street or Rural Address where well is located (if unknown, distance and direction from nearest town or intersection): 903 Main St., Neodesha, KS



3 LOCATE WELL WITH 'X' IN SECTION BOX: 4 DEPTH OF COMPLETED WELL: 15 ft Depth(s) Groundwater Encountered: 1) 15 ft 2) ft 3) ft, or 4) Dry Well WELL'S STATIC WATER LEVEL: 5.87 ft. [X] below land surface, measured on (mo-day-yr) 6/11/20 [ ] above land surface, measured on (mo-day-yr) Pump test data: Well water was ft after hours pumping gpm Water well was ft after hours pumping gpm Estimated Yield: gpm Bore Hole Diameter: 7.25 in to ft, and in to ft

5 Latitude: 37.41704 (decimal degrees) Longitude: 95.68498 (decimal degrees) Horizontal Datum: [X] WGS 84 [ ] NAD 83 [ ] NAD 27 Source for Latitude/Longitude: [ ] GPS (unit make/model: ) (WAAS enabled? [ ] Yes [ ] No) [X] Land Survey [ ] Topographic Map [ ] Online Mapper 6 Elevation: 803.19 ft [ ] Ground Level [X] TOC Source: [X] Land Survey [ ] GPS [ ] Topographic Map [ ] Other

7 WELL WATER TO BE USED AS: 1 Domestic: [ ] Household [ ] Lawn & Garden [ ] Livestock [ ] Irrigation [ ] Feedlot [ ] Industrial 2 Public Water Supply: well ID 3 Dewatering: how many wells? 4 Aquifer Recharge: well ID 5 Monitoring: well ID KMW5 6 Environmental Remediation: well ID [ ] Air Sparge [ ] Soil Vapor Extractor [ ] Recovery [ ] Injection 7 Oil Field Water Supply: lease 8 Test Hole: well ID [ ] Cased [ ] Uncased [ ] Geotechnical 9 Geothermal: How many bores? a) Closed Loop [ ] Horizontal [ ] Vertical b) Open Loop [ ] Surface Discharge [ ] Inj. of Water [ ] Other (specify):

Was a chemical/bacteriological sample submitted to KDHE? [ ] Yes [X] No If yes, date sample was submitted:

8 TYPE OF CASING USED: [ ] Steel [X] PVC [ ] Other CASING JOINTS: [ ] Glued [ ] Clamped [ ] Welded [X] Threaded Casing diameter 2 in. to 5 ft, Diameter in. to ft, Diameter in. to ft, Casing height above land surface -0.52 in. Weight lbs./ft. Well thickness or gauge No TYPE OF SCREEN OR PERFORATION MATERIAL: [ ] Steel [ ] Stainless Steel [ ] Fiberglass [X] PVC [ ] Brass [ ] Galvanized Steel [ ] Concrete tile [ ] None used (open hole) [ ] Other (Specify) SCREEN OR PERFORATION OPENINGS ARE: [ ] Continuous Slot [X] Mill Slot [ ] Gauze Wrapped [ ] Torch Cut [ ] Drilled Holes [ ] Other (Specify) [ ] Louvered Shutter [ ] Key Punched [ ] Wire Wrapped [ ] Saw Cut [ ] None (Open Hole) SCREEN-PERFORATED INTERVALS: From 5 ft. to 15 ft, From ft. to ft, From ft. to ft, GRAVEL PACK INTERVALS: From 3 ft. to 15 ft, From ft. to ft, From ft. to ft,

9 GROUT MATERIAL: [ ] Neat cement [ ] Cement grout [X] Bentonite [X] Other Concrete: 0-0.5' Grout intervals: From 0.5 ft. to 3 ft, From ft. to ft, From ft. to ft,

Nearest source of possible contamination: [ ] Septic Tank [ ] Lateral Lines [ ] Pit Privy [ ] Livestock Pens [ ] Insecticide Storage [ ] Sewer Lines [ ] Cess Pool [ ] Sewage Lagoon [X] Fuel Storage [ ] Abandoned Water Well [ ] Watertight Sewer Lines [ ] Seepage Pit [ ] Feedyard [ ] Fertilizer Storage [ ] Oil Well / Gas Well [ ] Other (Specify)

Direction from well? NW Distance from well? ~30 ft

Table with 6 columns: FROM, TO, LITHOLOGIC LOG, FROM, TO, LITHO. LOG (cont.) or PLUGGING INTERVALS. Rows show depth intervals from 0 to 15 feet with lithology descriptions like Grass/topsoil, Silty clay, Clayey shale, Sandstone.

Notes: KDHE ID: Kerr-McGee #6465; U3-103-00198 Target of monitoring well is shallow groundwater, <20' of grout was installed at the direction of KDHE.

11 CONTRACTOR'S OR LANDOWNER'S CERTIFICATION: This water well was [X] constructed, [ ] reconstructed, or [ ] plugged under my jurisdiction and was completed on (mo-day-year) 6/11/20 and this record is true to the best of my knowledge and belief. Kansas Water Well Contractor's License No 757 This Water Well Record was completed on (mo-day-year) 7/7/20 under the business name of Larsen & Associates, Inc. Signature

WILLIAM

20-30-10=

# DENNIS L HANDKE

1820 NW 59th Terrace  
TOPEKA, KANSAS 66618  
785-286-4047 Home

Jess Chapman  
Larsen & Associates  
1311 E. 25<sup>th</sup> Street, Suite B  
Lawrence, Kansas, 66046

July 1, 2020

RE: Monitor Well Elevation Survey  
903 Main St., Neodesha, Kansas

Proj. 20-00DD  
Kerr-McGee #6465  
U3-103-00198

Bench Mark: Chisled Square on SW corner of concrete light base at NE corner of property.  
Elev: 805.74      North 1376.40      West 4338.32      (from SE Cor. Sec. 20-30-16E)

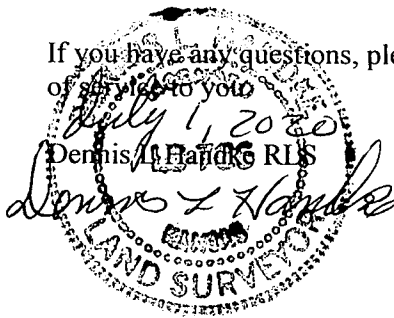
KMW-1	rim	806.41	North	1335.41	NW1/4,NE1/4,SW1/4,SW1/4
	top pipe	806.17	West	4396.06	Lat= 37.41732    Long = 95.68518
KMW-2	rim	807.06	North	1297.43	NW1/4,NE1/4,SW1/4,SW1/4
	top pipe	806.83	West	4424.60	Lat= 37.41721    Long = 95.68528
KMW-3	rim	804.67	North	1297.96	NW1/4,NE1/4,SW1/4,SW1/4
	top pipe	804.44	West	4352.27	Lat= 37.41721    Long = 95.68503
KMW-4	rim	803.75	North	1234.29	NW1/4,NE1/4,SW1/4,SW1/4
	top pipe	803.45	West	4415.51	Lat= 37.41704    Long = 95.68524
KMW-5	rim	803.71	North	1234.75	NW1/4,NE1/4,SW1/4,SW1/4
	top pipe	803.19	West	4339.55	Lat= 37.41704    Long = 95.68498
KMW-6	rim	805.93	North	1365.34	NW1/4,NE1/4,SW1/4,SW1/4
	top pipe	805.49	West	4352.90	Lat= 37.41740    Long = 95.68503
KMW-7	rim	800.96	North	1062.86	NW1/4,NE1/4,SW1/4,SW1/4
	top pipe	800.63	West	4542.50	Lat= 37.41656    Long = 95.68568
KMW-8	rim	804.16	North	1297.00	NW1/4,NE1/4,SW1/4,SW1/4
	top pipe	803.31	West	4494.79	Lat= 37.41721    Long = 95.68552

Lat & Long derived from Neodesha 7.5' quad map. WGS 84.

Elevation established from NGS BM NEODESHA 1933. NAVD 29.

If you have any questions, please feel free to call me. Thank you for the opportunity to be of service to you.

Dennis L Handke RLS

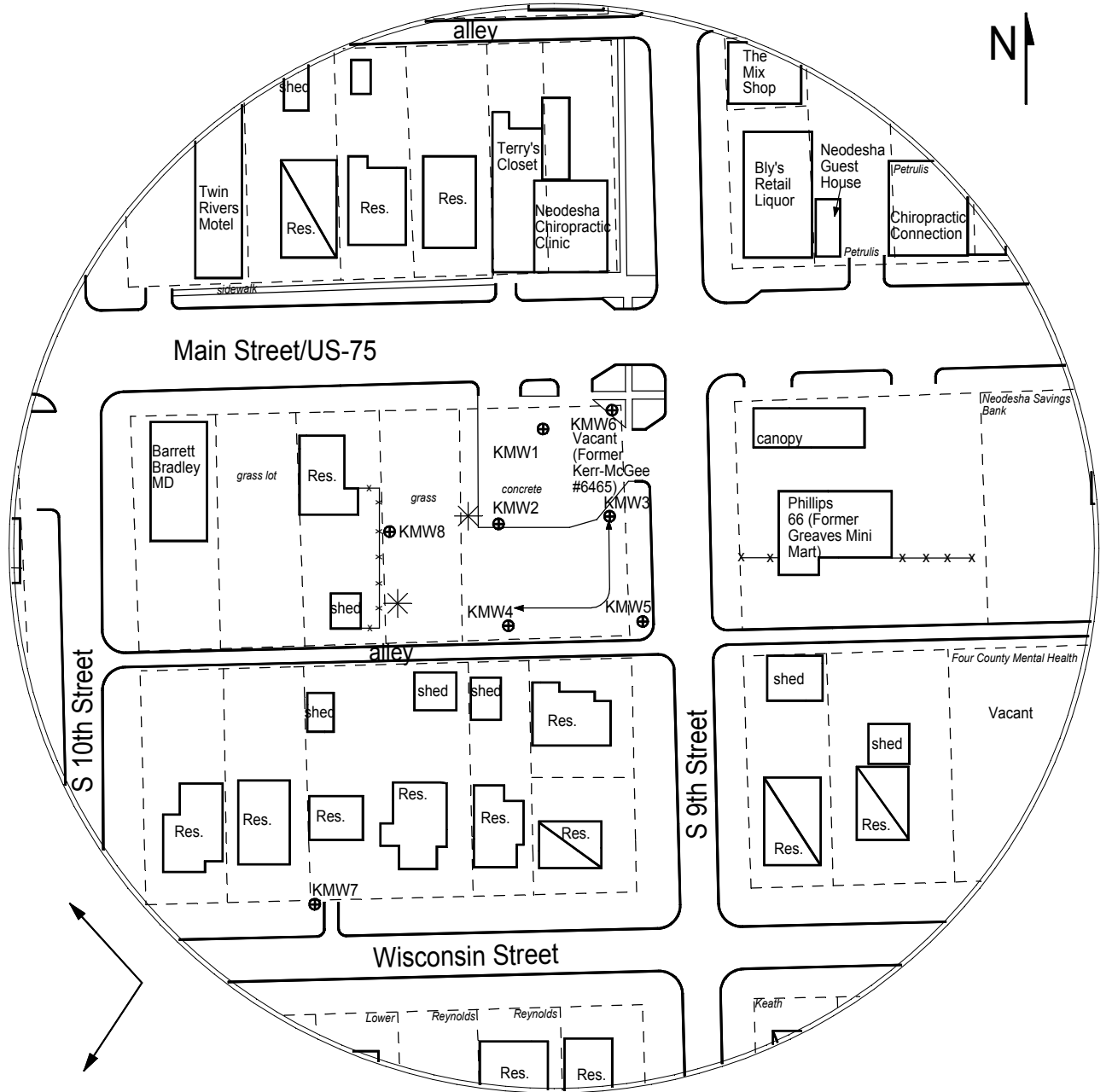


RECEIVED

JUL 31 2020

BUREAU OF WATER

NOTE: Figures exhibited within this report are only to be used within the context of this report. Placement of property lines, wells, structures, and roads is based on the available information from county appraiser maps, surveys, site visits, and/or previous vendor reports and should be considered approximate.



Estimated Groundwater Flow Direction

FIGURE 2.1 - 350 FT RADIUS AREA BASE MAP



1311 E 25th St. Suite B Lawrence, KS 66046 785-841-8707 office 785-865-4282 fax

**PROJECT:**  
 Kerr-McGee #6465  
 903 Main Street  
 Neodesha, KS  
 KDHE ID: U3-103-00198  
 Date: 6/11-12/20



**LEGEND:**

- Approximate Location of Former Hydraulic Lift Station & 300 Gallon Used Oil UST
- Approximate Location of Former UST Basin, Product Lines & Pump Islands
- Approximate Location of Active UST Basin & Pump Islands
- Building with Basement
- Approximate Location of Property Line
- Monitoring Well (Drilled 6/12/20) (Greaves Mini Mart U3-103-10019)
- Monitoring Well (May's Apco U3-103-00660)
- Plugged Well
- Monitoring Well (Installed 6/10-11/20)
- Fire Hydrant
- Gas Lines (1.5 - 3 ft bgs)
- Electric Lines (2 - 6 ft bgs)
- Overhead Lines (25' - 40' high)
- Water Lines (1.5 - 3 ft bgs)

NOTE: SB1 & SB2 were drilled to collect hydrologic samples.  
 NOTE: Utility depths, heights and locations are approximate.