

Mw 1

Check: ☒ White Copy, ☐ Blue Copy, ☐ Pink Copy

# SOIL BORING LOG & MONITORING WELL CONSTRUCTION DIAGRAM

Boring / Well Number: <b>MW-1 (0144113)</b>		Facility <b>Former Cash Grain</b> Name: <b>- MFA Weir</b>		Facility <b>307 S. Lincoln</b> Street Address: <b>Street, Weir, KS</b>		
Boring Depth (ft) X Diameter (in): <b>10.8' x 8.25"</b>				Drilling Method: <b>Hollow Stem Auger</b>		
Well Contractor Name: <b>Sid Juwarker</b> Registration Number: <b>772</b>				Logged By: <b>Leah Calvert</b>		
Ground Surface Elevation (ASL): <b>99.27</b>			Top of Casing Elevation (ASL): <b>98.75</b>			
Date: <b>2/9/2010</b> Start Time: <b>8:15am</b>		Date: <b>2/9/2010</b> End Time: <b>9:45am</b>		UST Number		
				LUST Number		
Depth Feet	Well Construction Details	Blow Count if applicable	Sample No.	Type*	PID/FID Reading	Rock Formations, Soil Color and Classifications, Observations (moisture, odor, etc.) First column for USCS
0						FILL 0 - 6" concrete
1.25						FILL 6" - 2' gravel
2.5						CL 2 - 5' orange-brown clay w/ gray mottling
3.75						
5						CL 5 - 9' gray clay w/ orange-brown mottling, trace silt, moisture decreases with depth
6.25						
7.5						
8.75						
10						CL 9 - 10.8' gray clay, trace mica, very dry, auger refusal at 10.8'
11.25						Bottom of Boring at 10.8 feet
12.5						
13.75						
15						

\* SS (split spoon) HS (hollow stem auger) HA (hand auger)

Observations	Date:	<b>2/9/2010</b>			
Water Levels (ASL)	Level:				
Static Water Level Symbol	Time:	<b>No Water</b>			

VOGEL AVENUE

PARCEL 2  
STORAGE  
SHED

WATER  
UTILITY  
PIT

TELEPHONE  
POLE

DRAINAGE DITCH

MW-3

AREA C

APPROXIMATE AREA  
OWNED BY CHEROKEE  
COUNTY

SLOPE

DRY FERT  
STOR

SYCAMORE STREET

FIRE  
HYDRANT

SURFACE  
DRAINAGE

PARCEL 3

LOADING  
DOCK

FEED & MIN  
BLOCK

FLOOR  
DRAIN

FERT.  
CARTS &  
SPREADERS

SEED STORAGE

CONCRETE

GRAVEL

PARKING

GRAVEL

GRASS

POLK AVE

TMW-6

TMW-12

TMW-8

TMW-13

TMW-14  
TMW-7

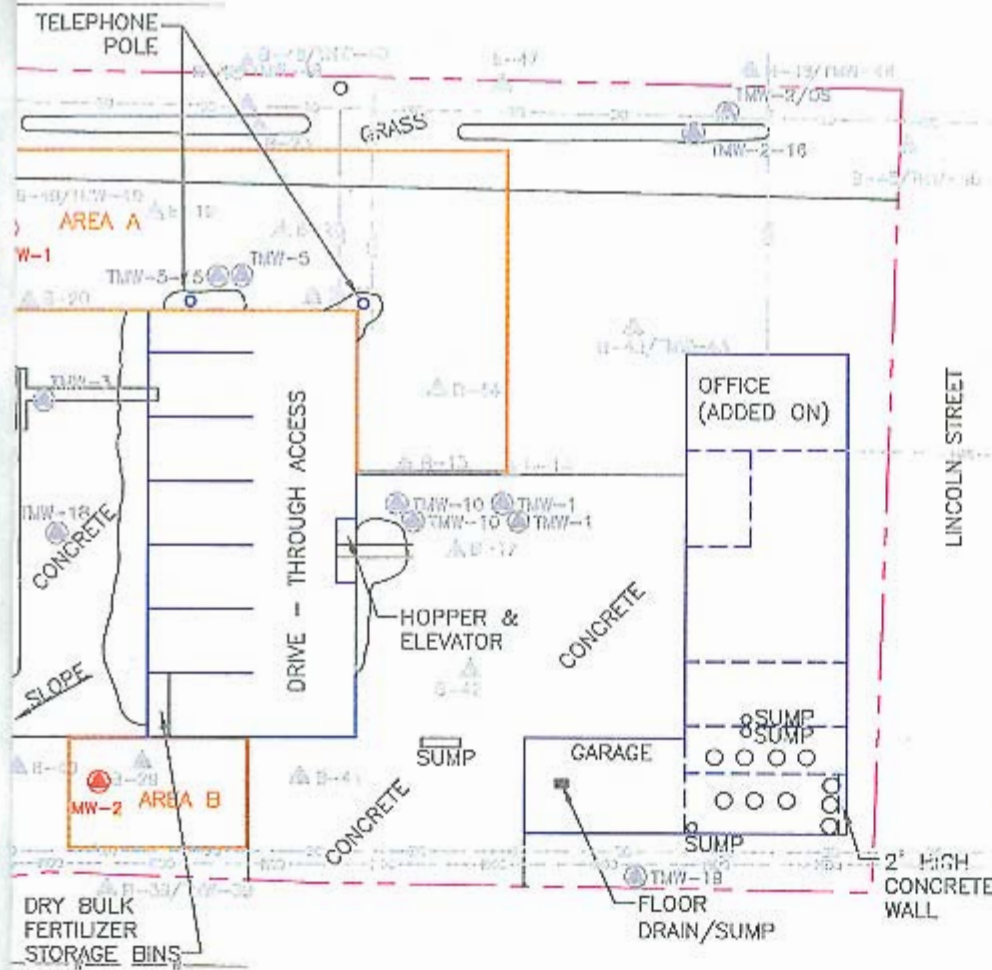
TMW-25

TMW-9C  
TMW-9

TMW-21

TMW-9C

TMW-9C



SCALE



# LEGEND

- MW-1 APPROXIMATE MONITORING WELL LOCATION
- TMW-11 APPROXIMATE TEMPORARY MONITORING WELL LOCATION
- ▲ B-14 SOIL BORING LOCATION
- W — WATER LINE
- E — OVERHEAD ELEC LINE
- T — COMMUNICATIONS/TELEPHONE
- G — NATURAL GAS LINE
- - - - - PROPERTY BOUNDARY
- BUILDING
- EXCAVATION BOUNDARY



UPDATED SITE MAP  
FORMER CASH GRAIN  
307 S. LINCOLN, WEIR, KS  
PROJECT NO. MFAIN WE006  
FEBRUARY 2010

**BARKERLEMAR**  
ENGINEERING CONSULTANTS

1801 Industrial Circle - West Des Moines, Iowa - 50265  
Phone: 515.256.8814 - Fax: 515.256.0152 - [www.barkerlemar.com](http://www.barkerlemar.com)

FIGURE

2