

WATER WELL RECORD Form WWC-5 1371972

Original Record Correction Change in Well Use

Division of Water Resources App. No.

Well ID

1 LOCATION OF WATER WELL: County, Fraction, Section Number, Township Number, Range Number

2 WELL OWNER: Last Name, Business, Address, City, State, ZIP, Street or Rural Address

3 LOCATE WELL WITH 'X' IN SECTION BOX: N, W, E, S, 1 mile grid

4 DEPTH OF COMPLETED WELL: Depth(s) Groundwater Encountered, WELL'S STATIC WATER LEVEL, Pump test data, Estimated Yield, Bore Hole Diameter

5 Latitude, Longitude, Datum, Source for Latitude/Longitude, Elevation, Source

7 WELL WATER TO BE USED AS: 1. Domestic, 2. Irrigation, 3. Feedlot, 4. Industrial, 5. Public Water Supply, 6. Dewatering, 7. Aquifer Recharge, 8. Monitoring, 9. Environmental Remediation, 10. Oil Field Water Supply, 11. Test Hole, 12. Geothermal, 13. Other

Was a chemical/bacteriological sample submitted to KDHE? Water well disinfected?





8 TYPE OF CASING USED: Steel, PVC, Other; CASING JOINTS; Casing diameter; TYPE OF SCREEN OR PERFORATION MATERIAL; SCREEN OR PERFORATION OPENINGS ARE; SCREEN-PERFORATED INTERVALS; GRAVEL PACK INTERVALS

9 GROUT MATERIAL: Neat cement, Cement grout, Bentonite, Other; Grout Intervals; Nearest source of possible contamination; Direction from well?

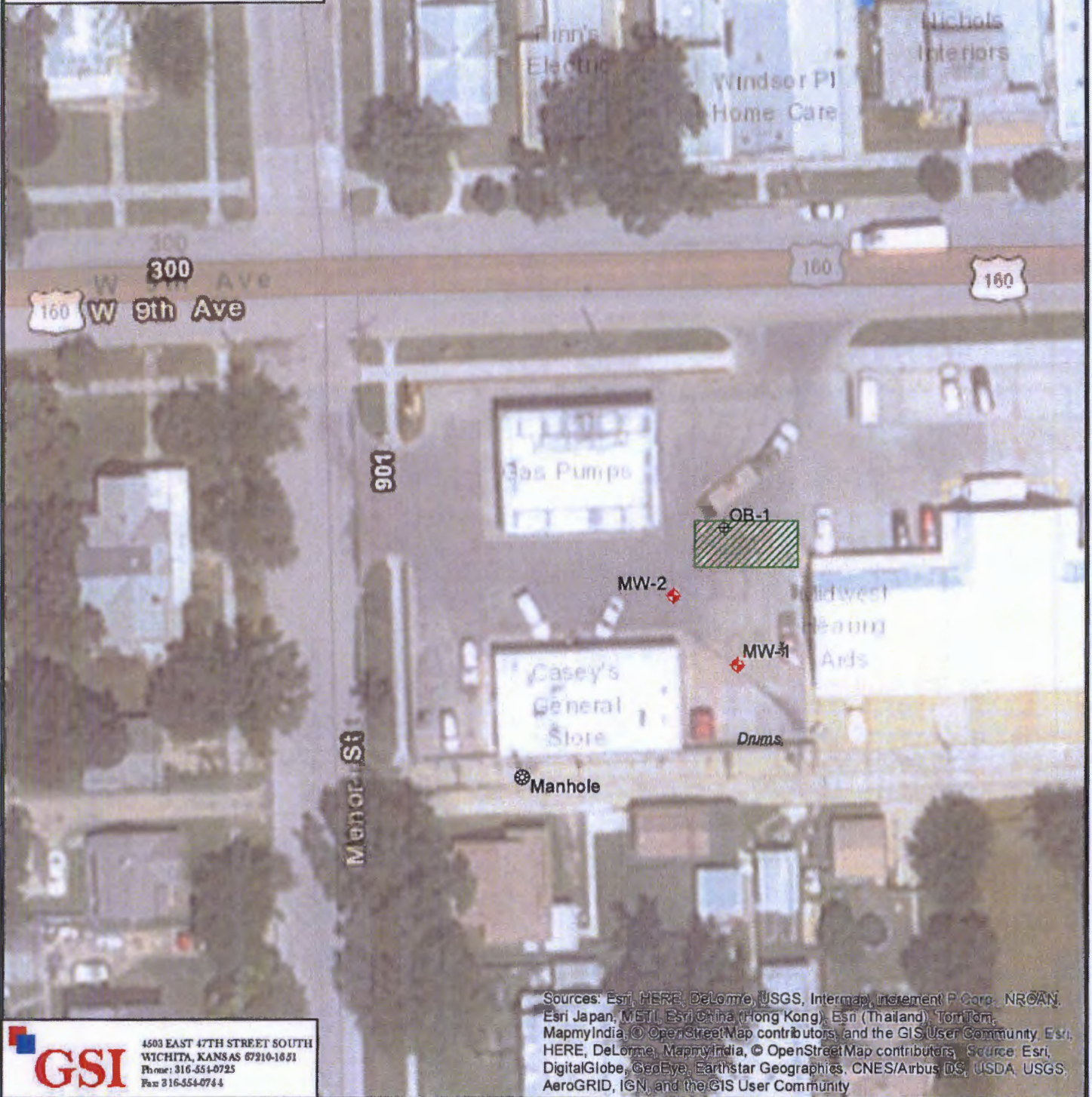
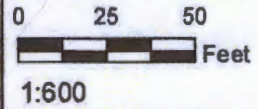
Table with 6 columns: 10 FROM, TO, LITHOLOGIC LOG, FROM, TO, LITHO. LOG (cont.) or PLUGGING INTERVALS. Includes Notes section.

11 CONTRACTOR'S OR LANDOWNER'S CERTIFICATION: This water well was constructed, reconstructed, or plugged under my jurisdiction...

**LEGEND**

-  = Approximate Site Boundary
-  = UST Basin
-  = Monitoring Well
-  = Observation Well

ALL LOCATIONS AND BOUNDARIES ARE APPROXIMATE



Sources: Esri, HERE, DeLorme, USGS, Intermap, increment P Corp., NRCAN, Esri Japan, METI, Esri China (Hong Kong), Esri (Thailand), TomTom, MapmyIndia, © OpenStreetMap contributors, and the GIS User Community, Esri, HERE, DeLorme, MapmyIndia, © OpenStreetMap contributors, Source: Esri, DigitalGlobe, GeoEye, Earthstar Geographics, CNES/Airbus DS, USDA, USGS, AeroGRID, IGN, and the GIS User Community

**GSI**  
 4503 EAST 47TH STREET SOUTH  
 WICHITA, KANSAS 67210-1631  
 Phone: 316-554-0725  
 Fax: 316-554-0744

**FIGURE 1**  
**SITE BASE MAP**

**Casey's General Store**  
 219 W. 9th Ave.  
 Winfield, Kansas

<b>PROJ#:</b> 1774055	<b>DRAWN BY:</b> CD
<b>DATE:</b> 2017-10-20	<b>PROJ.MANGR:</b> D.ROY