

WATER WELL RECORD

Form WWC-5

Division of Water Resources App. No.

Well ID

MW5

[X] Original Record [ ] Correction [ ] Change in Well Ust

1 LOCATION OF WATER WELL: County Labette Fraction NW 1/4 NE 1/4 NW 1/4 Section Number 11 Township Number T 33 S Range Number R 19 [X] E [ ] W

2 WELL OWNER: Last Name: Wyckoff First: Bill Business: Altamont Properties, Inc. Address: PO Box 497 City Altamont State: KS ZIP: 67330 Street or Rural Address where well is located (if unknown, distance and direction from nearest town or intersection): 400 E 4th St, Altamont, KS

3 LOCATE WELL WITH "X" IN SECTION BOX: [Diagram showing a 3x3 grid with 'X' in the center and 'N', 'S', 'E', 'W' labels]

4 DEPTH OF COMPLETED WELL: 13 ft Depth(s) Groundwater Encountered: 1) 13 ft 2) ft 3) ft, or 4) [ ] Dry Well WELLS STATIC WATER LEVEL: 3.00 ft. [X] below land surface, measured on (mo-day-yr) 3/31-4/1/21 [ ] above land surface, measured on (mo-day-yr) Pump test data: Well water was ft after hours pumping gpm Water well was ft after hours pumping gpm Estimated Yield: gpm Bore Hole Diameter: 7.25 in to ft, and in to ft

5 Latitude: 37.19287 (decimal degrees) Longitude: 95.29651 (decimal degrees) Horizontal Datum [X] WGS 84 [ ] NAD 83 [ ] NAD 27 Source for Latitude/Longitude: [ ] GPS (unit make/model: ) (WAAS enabled? [ ] Yes [ ] No) [X] Land Survey [ ] Topographic Map [ ] Online Mapper 6 Elevation 916.55 ft [ ] Ground Level [X] TOC Source [X] Land Survey [ ] GPS [ ] Topographic Map [ ] Other

7 WELL WATER TO BE USED AS: 1 Domestic: [ ] Household [ ] Lawn & Garden [ ] Livestock 2 [ ] Irrigation 3 [ ] Feedlot 4 [ ] Industrial 5 [ ] Public Water Supply: well ID 6 [ ] Dewatering: how many wells? 7 [ ] Aquifer Recharge: well ID 8 [X] Monitoring: well ID MW5 9 Environmental Remediation: well ID [ ] Air Sparge [ ] Soil Vapor Extractor [ ] Recovery [ ] Injection 10 [ ] Oil Field Water Supply: lease 11 Test Hole: well ID [ ] Cased [ ] Uncased [ ] Geotechnical 12 Geothermal: How many bores? a) Closed Loop [ ] Horizontal [ ] Vertical b) Open Loop [ ] Surface Discharge [ ] Inj. of Water [ ] Other (specify):

Was a chemical/bacteriological sample submitted to KDHE? [ ] Yes [X] No If yes, date sample was submitted: Water well disinfected? [ ] Yes [X] No

8 TYPE OF CASING USED: [ ] Steel [X] PVC [ ] Other CASING JOINTS: [ ] Glued [ ] Clamped [ ] Welded [X] Threaded Casing diameter 2 in. to 3 ft, Diameter in. to ft, Diameter in. to ft, Casing height above land surface -0.31 in. Weight lbs./ft. Well thickness or gauge No TYPE OF SCREEN OR PERFORATION MATERIAL: [ ] Steel [ ] Stainless Steel [ ] Fiberglass [X] PVC [ ] Other (Specify) [ ] Brass [ ] Galvanized Steel [ ] Concrete tile [ ] None used (open hole) SCREEN OR PERFORATION OPENINGS ARE: [ ] Continuous Slot [X] Mill Slot [ ] Gauze Wrapped [ ] Torch Cut [ ] Drilled Holes [ ] Other (Specify) [ ] Louvered Shutter [ ] Key Punched [ ] Wire Wrapped [ ] Saw Cut [ ] None (Open Hole) SCREEN-PERFORATED INTERVALS: From 3 ft. to 13 ft, From ft. to ft, From ft. to ft, GRAVEL PACK INTERVALS: From 2 ft. to 13 ft, From ft. to ft, From ft. to ft,

9 GROUT MATERIAL: [ ] Neat cement [ ] Cement grout [X] Bentonite [X] Other Concrete: 0-0.7' Grout intervals: From 0.7 ft. to 2 ft, From ft. to ft, From ft. to ft,

Nearest source of possible contamination: [ ] Septic Tank [ ] Lateral Lines [ ] Pit Privy [ ] Livestock Pens [ ] Insecticide Storage [ ] Sewer Lines [ ] Cess Pool [ ] Sewage Lagoon [X] Fuel Storage [ ] Abandoned Water Well [ ] Watertight Sewer Lines [ ] Seepage Pit [ ] Feedyard [ ] Fertilizer Storage [ ] Oil Well / Gas Well [ ] Other (Specify) Direction from well? W Distance from well? ~85 ft

10 FROM TO LITHOLOGIC LOG FROM TO LITHO. LOG (cont.) or PLUGGING INTERVALS

FROM	TO	LITHOLOGIC LOG	FROM	TO	LITHO. LOG (cont.) or PLUGGING INTERVALS
0	0.4	Topsoil, mostly gravel and silty clay			
0.4	2	Silty clay			
2	5.5	Weathered mudstone/shale			
5.5	13	Mudstone/shale			

Notes: KDHE ID: Altamont Properties, Inc.; U3-050-15129 Target of monitoring well is shallow groundwater, <20' of grout was installed at the direction of KDHE.

11 CONTRACTOR'S OR LANDOWNER'S CERTIFICATION: This water well was [X] constructed, [ ] -reconstructed, or [ ] plugged under my jurisdiction and was completed on (mo-day-year) 1/12/21 and this record is true to the best of my knowledge and belief. Kansas Water Well Contractor's License No 757 This Water Well Record was completed on (mo-day-year) 4/8/21 under the business name of Larsen & Associates, Inc. Signature

Mail 1 white copy along with a fee of \$5.00 for each constructed well to: Kansas Department of Health and Environment, Bureau of Water, GWSIS Section, 1000 SW Jackson St., Suite 420, Topeka, Kansas 66612-1367. Mail one to Water Well Owner and retain one for your records. Telephone 785-296-5524.

# DENNIS L HANDKE

1820 NW 59th Terrace  
TOPEKA, KANSAS 66618  
785-286-4047 Home  
785-286-1990 Fax

Jess Chapman  
Larsen & Associates  
1311 E. 25<sup>th</sup> Street, Suite B  
Lawrence, Kansas 66046

January 25, 2021

RE: Monitor Well Elevation Survey  
400 East 4<sup>th</sup> Street, Altamont, Kansas

Proj. 21-00A  
Altamont Properties, Inc  
KDHE ID U3-050-15129

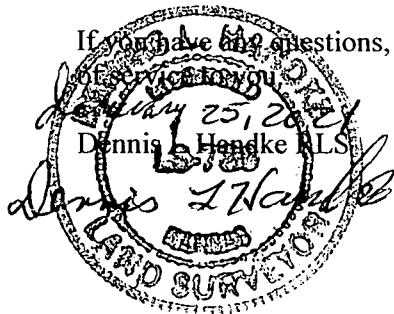
Bench Mark: Chisled Sq. on NW corner of concrete sign base at North center of property.

Elev:		North	West	
916.46		5308.94	3113.82	(from SE Cor. Sec. 11-33-19E)
MW-1	rim	915.51	North 5267.80	NW1/4,NE1/4,NE1/4,NW1/4
	top pipe	915.02	West 3151.75	Lat = 37.19284 Long = 95.29693
MW-2	rim	916.15	North 5235.08	NW1/4,NE1/4,NE1/4,NW1/4
	top pipe	915.81	West 3151.74	Lat = 37.19275 Long = 95.29693
MW-3	rim	916.32	North 5289.72	NW1/4,NE1/4,NE1/4,NW1/4
	top pipe	915.91	West 3108.69	Lat = 37.19290 Long = 95.29678
MW-4	rim	918.30	North 5399.96	SW1/4,SE1/4,SE1/4,SW1/4 (Sec. 2-33-19E)
	top pipe	917.93	West 3014.76	Lat = 37.19320 Long = 95.29646
MW-5	rim	916.86	North 5278.70	NW1/4,NE1/4,NE1/4,NW1/4
	top pipe	916.55	West 3030.90	Lat = 37.19287 Long = 95.29651
MW-6	rim	915.15	North 5296.49	NE1/4,NW1/4,NE1/4,NW1/4
	top pipe	914.61	West 3289.69	Lat = 37.19292 Long = 95.29740
MW-7	rim	912.80	North 5138.87	NE1/4,NW1/4,NE1/4,NW1/4
	top pipe	912.45	West 3382.02	Lat = 37.19248 Long = 95.29772
MW-8	rim	915.44	North 5208.82	NW1/4,NE1/4,NE1/4,NW1/4
	top pipe	915.19	West 3156.06	Lat = 37.19268 Long = 95.29694

Elevation derived from NGS BM Q17. NAVD 88.

Lat & Long derived from Altamont 7.5 Quad Map WGS84.

If you have any questions, please feel free to call me. Thank you for the opportunity to be



RECEIVED

APR 28 2021

BUREAU OF WATER

NOTE: Figures exhibited within this report are only to be used within the context of this report. Placement of property lines, wells, structures, and roads is based on the available information from county appraiser maps, surveys, site visits, and/or previous vendor reports and should be considered approximate.

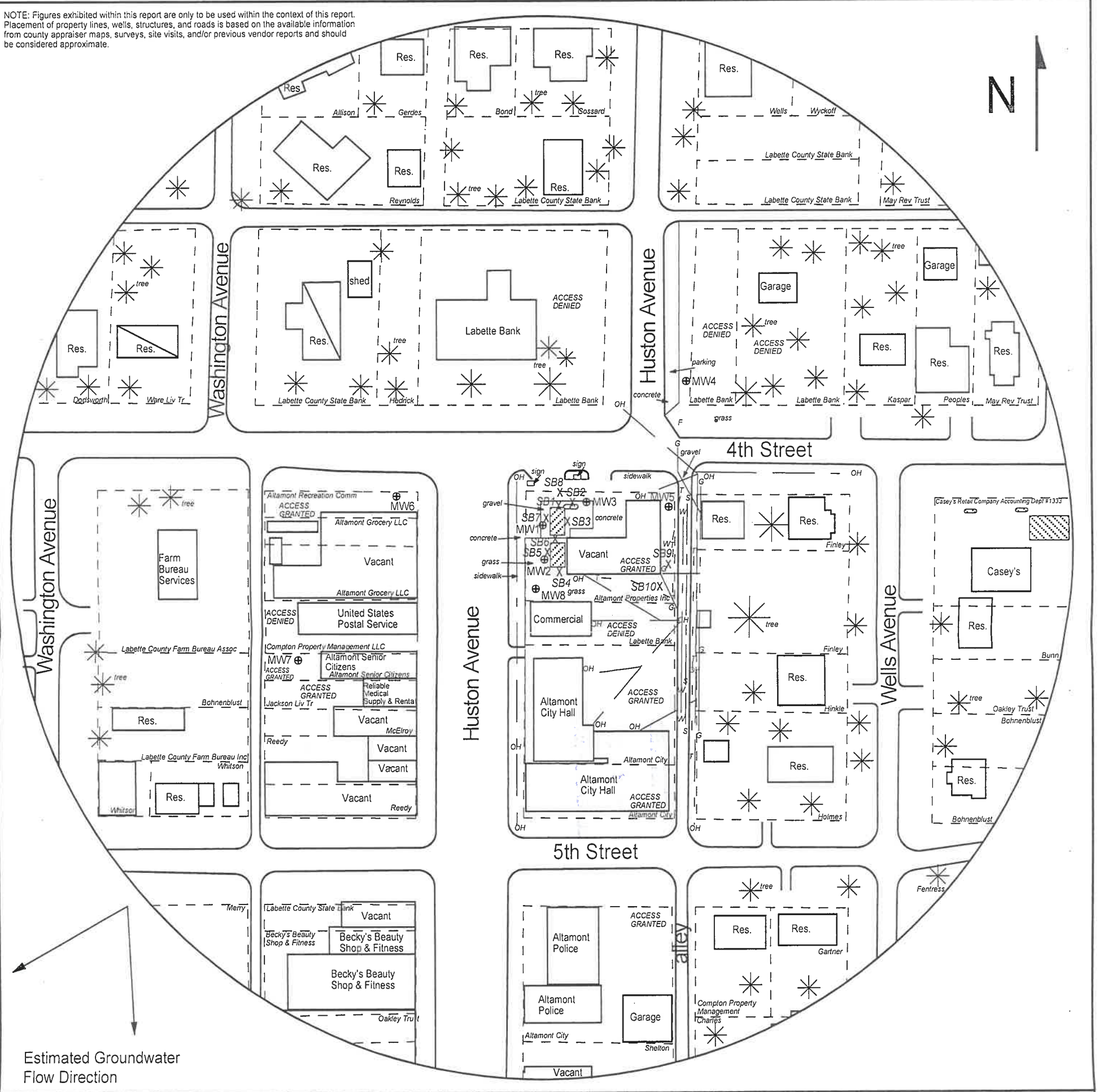


FIGURE 2.2 - 500 FT RADIUS AREA BASE MAP

**LEGEND**

- Approximate Location of Former UST Basin and Pump Islands
- Approximate Location of Active UST Basin and Pump Islands
- Building with Basement
- Approximate Location of Property Line
- Monitoring Well (Installed 1/12-14/21)
- Soil Boring (Drilled 1/13-14/21)
- Fire Hydrant
- Gas Lines (1.5 - 3 ft bgs)
- Overhead Lines (25'-40' high)
- Sewer Lines (2 - 6 ft bgs)
- Telephone Lines (2 - 6 ft bgs)
- Water Lines (2 - 6 ft bgs)

NOTE: SB9 & SB10 were drilled to collect hydrologic samples.  
NOTE: Utility depths, heights and locations are approximate.



RECEIVED

APR 28 2021

BUREAU OF WATER

**PROJECT:**

Altamont Properties, Inc.  
400 East 4th Street  
Altamont, KS  
KDHE ID: U3-050-15129  
Date: 4/1/21



1311 E 25th St., Suite B 785-841-8707 office  
Lawrence, KS 66046 785-865-4282 fax

RECEIVED

APR 28 2021

BUREAU OF WATER