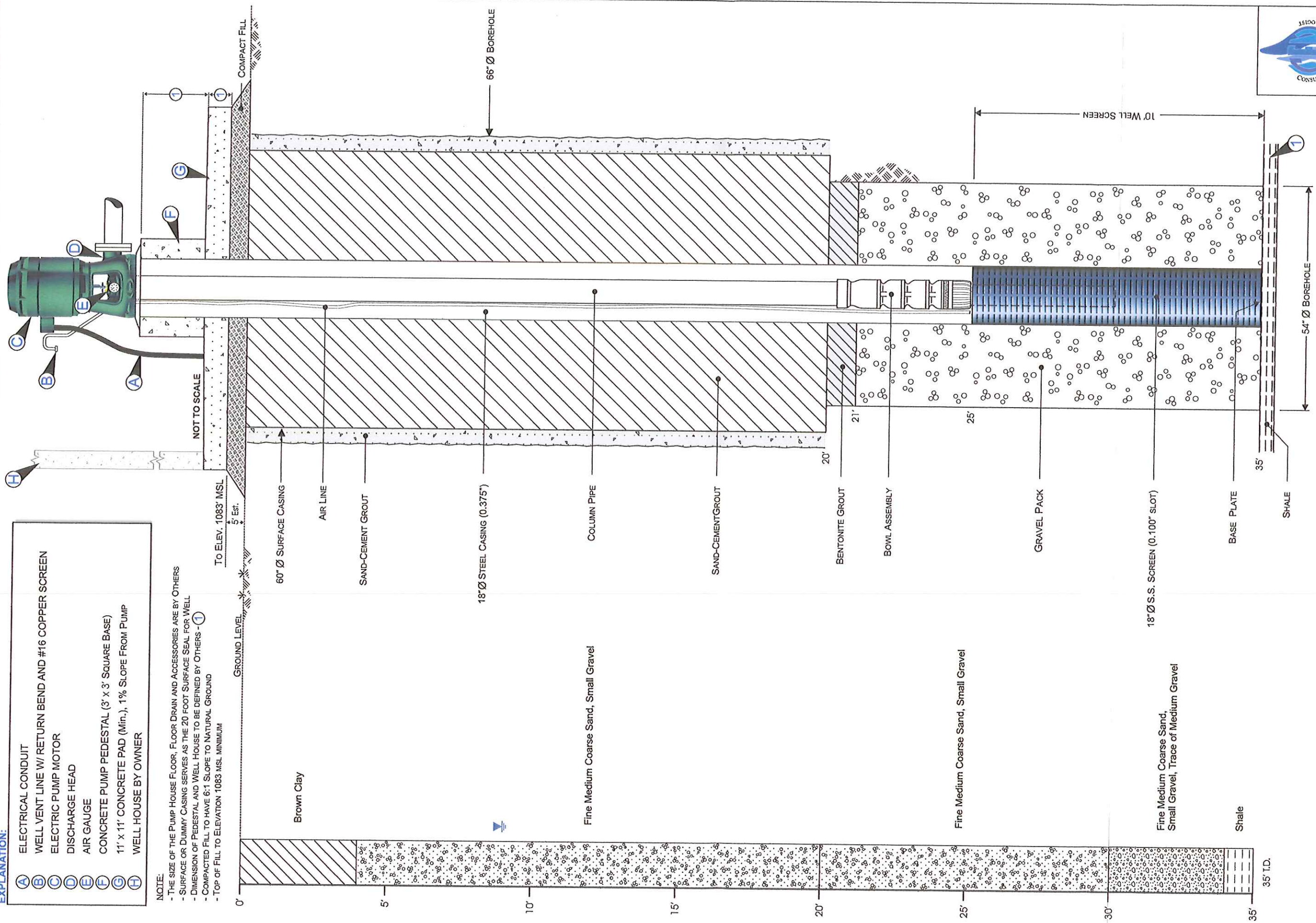


EXPLANATION:

- (A) ELECTRICAL CONDUIT
- (B) WELL VENT LINE W/ RETURN BEND AND #16 COPPER SCREEN
- (C) ELECTRIC PUMP MOTOR
- (D) DISCHARGE HEAD
- (E) AIR GAUGE
- (F) CONCRETE PUMP PEDESTAL (3' x 3' SQUARE BASE)
- (G) 11' x 11' CONCRETE PAD (Min.), 1% SLOPE FROM PUMP WELL HOUSE BY OWNER
- (H) WELL HOUSE BY OWNER

NOTE:

- THE SIZE OF THE PUMP HOUSE FLOOR, FLOOR DRAIN AND ACCESSORIES ARE BY OTHERS
- SURFACE OR DUMMY CASING SERVES AS THE 20 FOOT SURFACE SEAL FOR WELL
- DIMENSION OF PEDESTAL AND WELL HOUSE TO BE DEFINED BY OTHERS - (1)
- COMPACTED FILL TO HAVE 6:1 SLOPE TO NATURAL GROUND
- TOP OF FILL TO ELEVATION 1083 MSL MINIMUM



3314 NW Human Road
Silver Lake, KS 65230-0243
Mobile: (785)224-0929
e-mail: carl@carlnuzman.com

DRAWING NO
CAKS-2

Carl E. Nuzman, P.E., P.Hg.
(Consulting Engineer/Hydrologist)

TITLE:
TEST HOLE BORING AND
WELL CONSTRUCTION DIAGRAM

DRAWN BY: DAVID LUJAN
CHECKED BY: CARL NUZMAN
DATE: 01/27/18
DATE: / /
DATE: / /

APPROVAL OF REVISIONS			
REV.	SHEETS	ENGINEER	DATE