

JAN 29 2018

RECEIVED

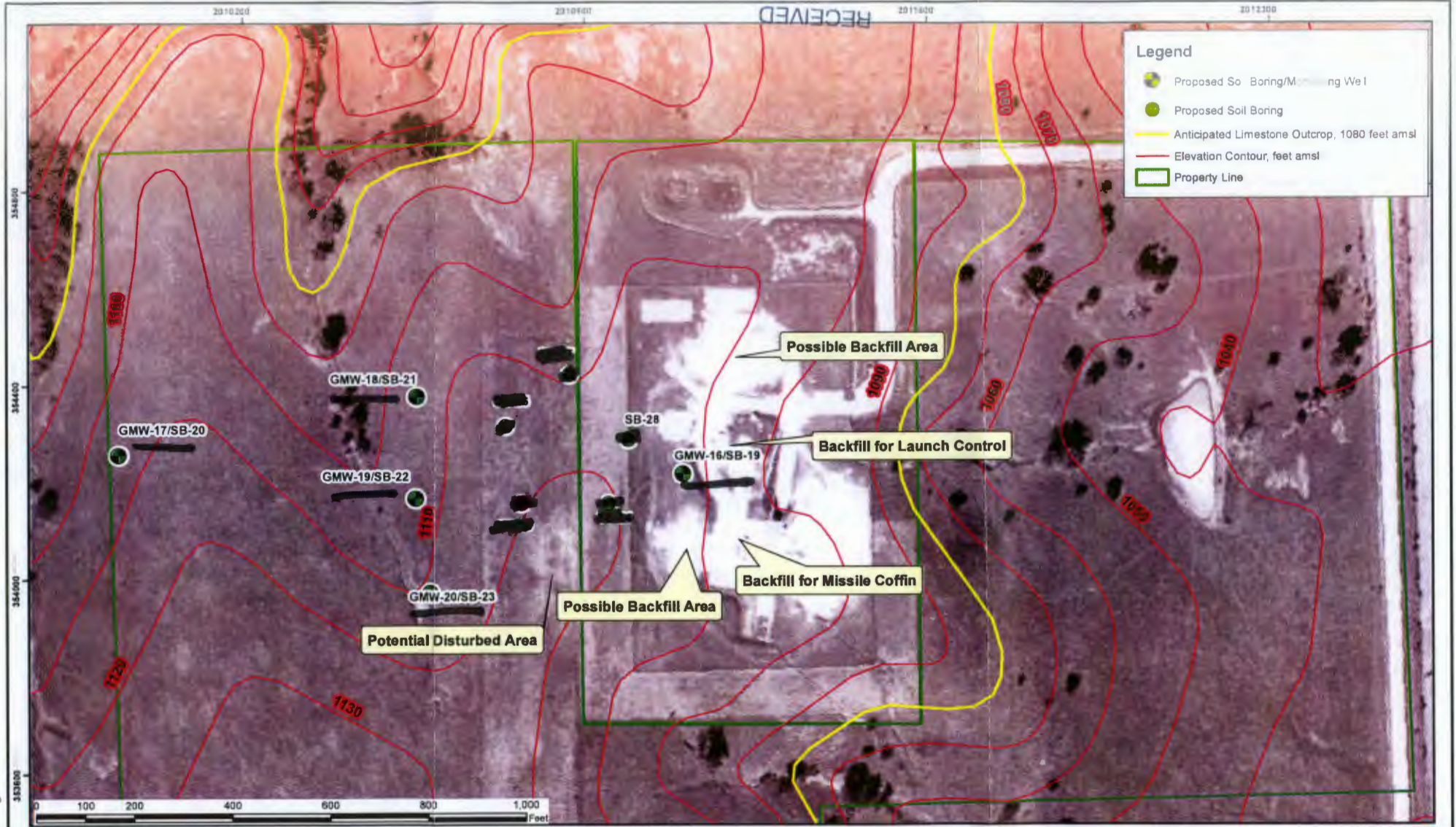


Figure 7. Remedial Investigation proposed sampling locations on a 1966 aerial photograph.

Base map source - ESRI Digital Globe
Elevation contours (feet AMSL) - USGS



U.S. Army Corps of Engineers
Kansas City District



Former Forbes Atlas
Missile Site S-1
Jefferson County, Kansas

9-9-17E

JEFFERSON Co