

## MW2

Revised 1/20/2015

NOTE: Figures exhibited within this report are only to be used within the context of this report. Placement of property lines, wells, structures, and roads is based on the available information from county appraiser maps, surveys, site visits, and/or previous vendor reports and should be considered approximate.

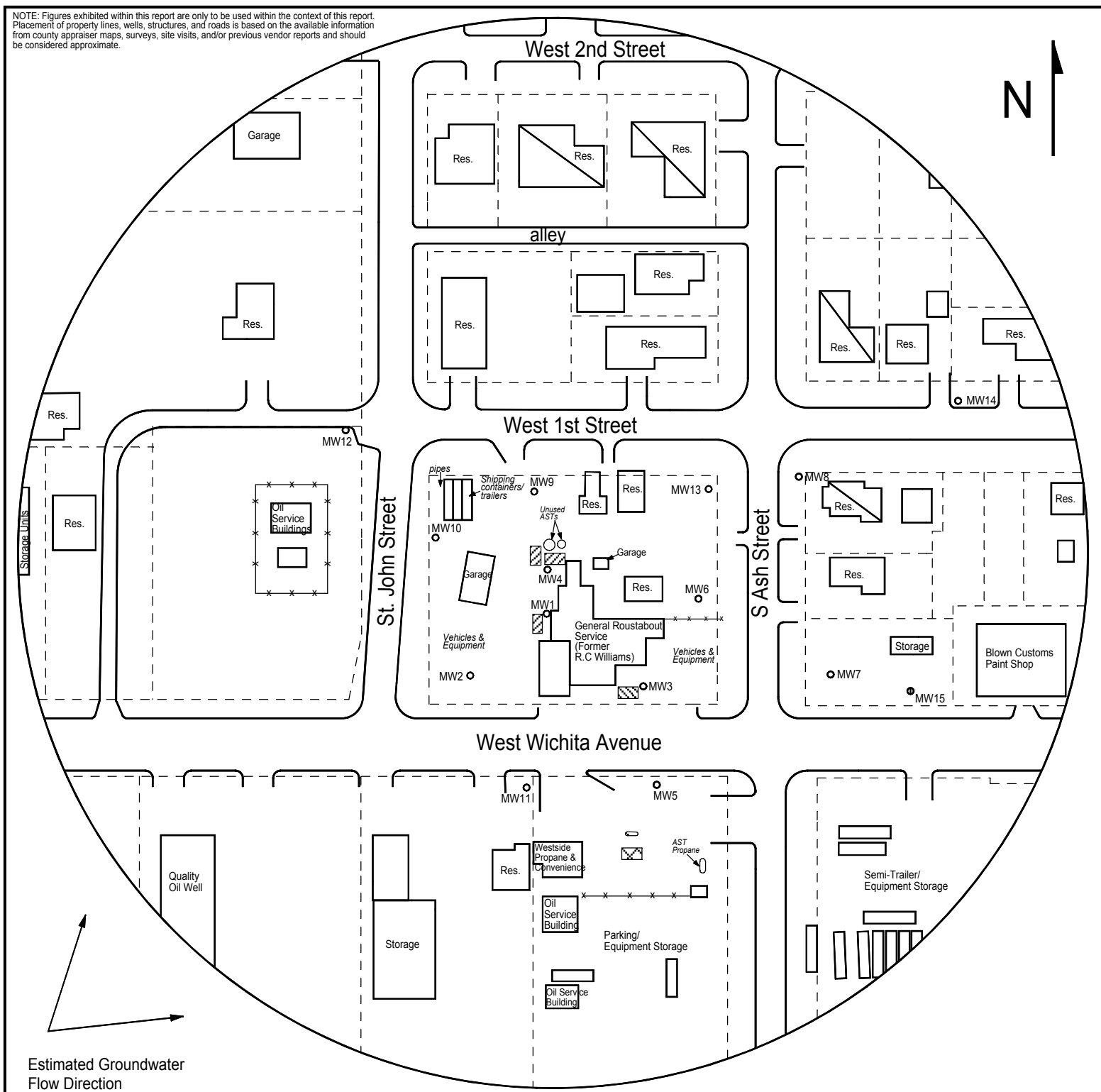


FIGURE 1 - 500 FT RADIUS AREA BASE MAP



1311 E 25th St., Suite B 785-841-8707 office  
Lawrence, KS 66046 785-865-4282 fax

**PROJECT:**

R.C. Williams  
615 W. Wichita Ave.  
Russell, KS  
KDHE ID: U6-084-00397  
Date: 4/29/20

0 100 ft

**LEGEND**

- Approximate Location of Former Gasoline UST Basin
- Approximate Location of Former Diesel UST Basin
- Approximate Location of Active Gasoline UST Basin and Pump Island
- Building with Basement
- Approximate Location of Property Line
- Plugged Monitoring Well
- Destroyed Monitoring Well