

NOTE: Figures exhibited within this report are only to be used within the context of this report. Placement of property lines, wells, structures, and roads is based on the available information from county appraiser maps, surveys, site visits, and/or previous vendor reports and should be considered approximate.

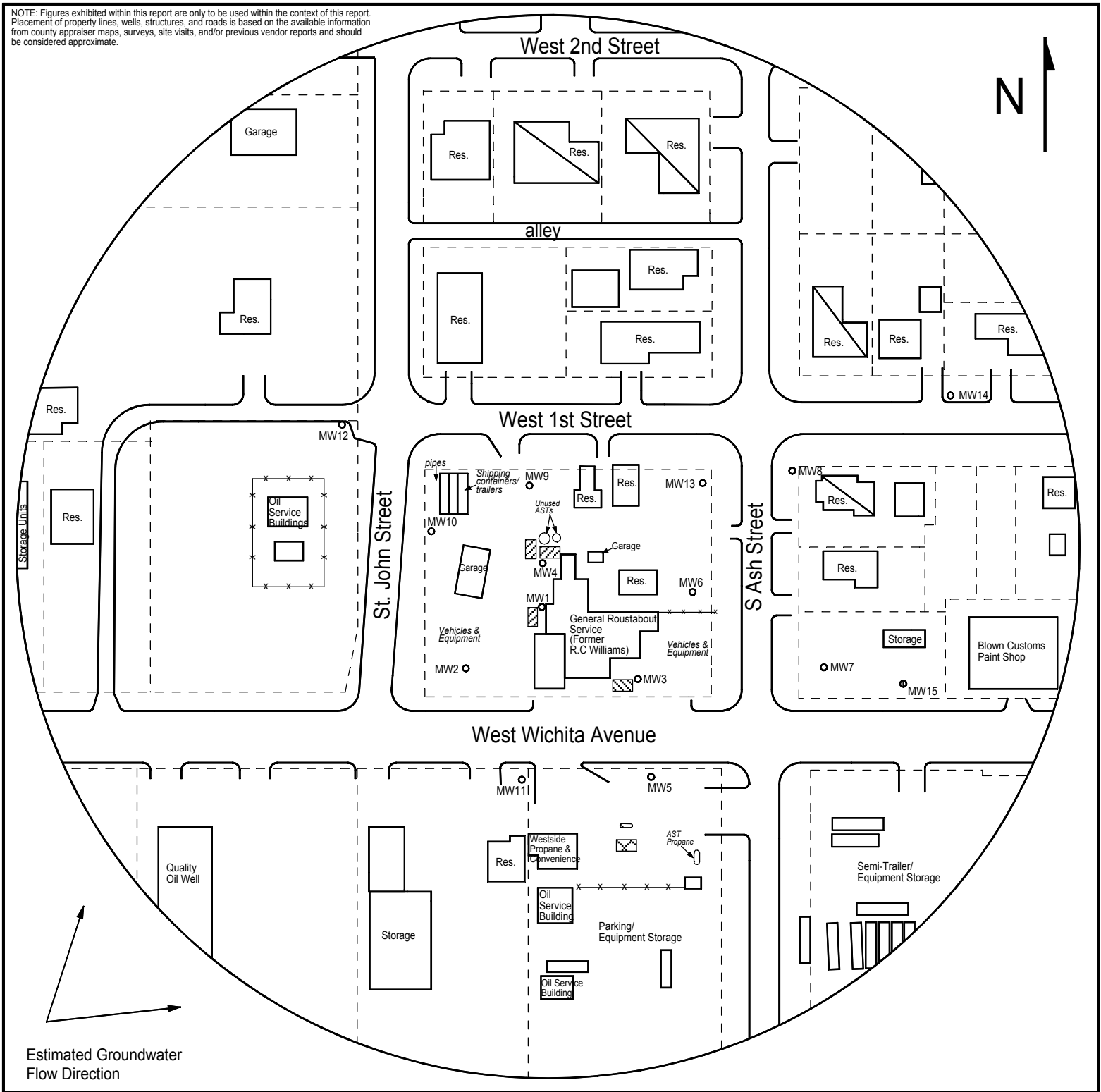


FIGURE 1 - 500 FT RADIUS AREA BASE MAP

LEGEND

- Approximate Location of Former Gasoline UST Basin
- Approximate Location of Former Diesel UST Basin
- Approximate Location of Active Gasoline UST Basin and Pump Island
- Building with Basement
- Approximate Location of Property Line
- Plugged Monitoring Well
- Destroyed Monitoring Well

PROJECT:

R.C. Williams
 615 W. Wichita Ave.
 Russell, KS
 KDHE ID: U6-084-00397
 Date: 4/29/20



1311 E 25th St., Suite B 785-841-8707 office
 Lawrence, KS 66046 785-865-4282 fax