

WATER WELL RECORD

Form WWC-5

Division of Water Resources App. No

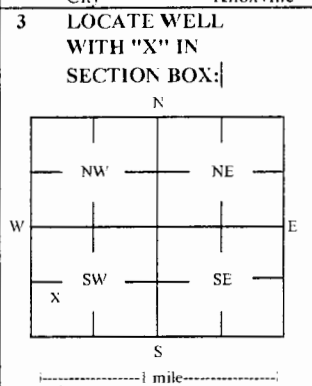
Well ID

MW7

Original Record Correction Change in Well Ust

1 LOCATION OF WATER WELL: County Saline Fraction NE 1/4 NW 1/4 SW 1/4 SW 1/4 Section Number 36 Township Number T 13 S Range Number R 3 E W

2 WELL OWNER: Last Name: Business: Pilot Travel Centers LLC Address: 5508 Lonas Dr. City: Knoxville State: TN ZIP: 37909 Street or Rural Address where well is located (if unknown, distance and direction from nearest town or intersection): 1944 North 9th Street, Salina, KS



3 LOCATE WELL WITH 'X' IN SECTION BOX: 4 DEPTH OF COMPLETED WELL: 32 ft Depth(s) Groundwater Encountered: 1) 32 ft 2) ft 3) ft, or 4) Dry Well WELL'S STATIC WATER LEVEL: 27.61 ft

5 Latitude: 38.87368 (decimal degrees) Longitude: 97.61004 (decimal degrees) Horizontal Datum: X WGS 84 NAD 83 NAD 27 Source for Latitude/Longitude: GPS (unit make/model): (WAAS enabled? Yes No) X Land Survey Topographic Map Online Mapper

7 WELL WATER TO BE USED AS: 1 Domestic: Household Lawn & Garden Livestock Irrigation Feedlot Industrial 5 Public Water Supply: well ID 6 Dewatering: how many wells? 7 Aquifer Recharge: well ID 8 X Monitoring: well ID MW7 9 Environmental Remediation: well ID Air Sparge Soil Vapor Extractor Recovery Injection 10 Oil Field Water Supply: lease 11 Test Hole: well ID Cased Uncased Geotechnical 12 Geothermal: How many bores? a) Closed Loop Horizontal Vertical b) Open Loop Surface Discharge Inj. of Water Other (specify):

Was a chemical/bacteriological sample submitted to KDHE? Yes No X No If yes, date sample was submitted: Water well disinfected? Yes No X No

8 TYPE OF CASING USED: Steel PVC X PVC Other CASING JOINTS: Glued Clamped Welded X Threaded Casing diameter 2 in. to 17 ft. Diameter in. to ft. Diameter in. to ft. Casing height above land surface 3.47 in. Weight lbs./ft. Well thickness or gauge No TYPE OF SCREEN OR PERFORATION MATERIAL: Steel Stainless Steel Fiberglass X PVC Other (Specify) Brass Galvanized Steel Concrete tile None used (open hole) SCREEN OR PERFORATION OPENINGS ARE: Continuous Slot X Mill Slot Gauze Wrapped Torch Cut Drilled Holes Other (Specify) Louvered Shutter Key Punched Wire Wrapped Saw Cut None (Open Hole) SCREEN-PERFORATED INTERVALS: From 17 ft to 32 ft, From ft. to ft., From ft. to ft. GRAVEL PACK INTERVALS: From 15 ft to 32 ft, From ft. to ft., From ft. to ft.

9 GROUT MATERIAL: Neat cement Cement grout X Bentonite X Other Concrete: 0-1' Grout intervals: From 1 ft. to 15 ft., From ft. to ft., From ft. to ft.

Nearest source of possible contamination: Septic Tank Lateral Lines Pit Privy Livestock Pens Insecticide Storage Sewer Lines Cess Pool Sewage Lagoon X Fuel Storage Abandoned Water Well Watertight Sewer Lines Seepage Pit Feedyard Fertilizer Storage Oil Well / Gas Well Other (Specify): Direction from well? NE Distance from well? ~140 ft

Table with 6 columns: FROM, TO, LITHOLOGIC LOG, FROM, TO, LITHO. LOG (cont.) or PLUGGING INTERVALS. Rows include Limestone gravel, Silty clay, Silty clay grading to fine silt, Silt, Clay, Sandy clay.

Notes: KDHE ID: Pilot Travel Center #903; U5-085-15025 Target of monitoring well is shallow groundwater, <20' of grout was installed at the direction of KDHE

11 CONTRACTOR'S OR LANDOWNER'S CERTIFICATION: This water well was X constructed, reconstructed, or plugged under my jurisdiction and was completed on (mo-day-year) 6/18/18 and this record is true to the best of my knowledge and belief. Kansas Water Well Contractor's License No 757 This Water Well Record was completed on (mo-day-year) 7/31/18 under the business name of Larsen & Associates, Inc Signature

Salina

NE NW SW SW

36-135-3W

DENNIS L HANDKE

1820 NW 59th Terrace
TOPEKA, KANSAS 66618
785-286-4047 Home
785-286-1990 Fax

Jessica Chapman
Larsen & Associates
1311 E. 25th Street, Suite B
Lawrence, Kansas, 66046

July 16, 2018

RE: Monitor Well Elevation Survey
1994 N. 9th Street, Salina, Kansas

Proj. 18-00U
Pilot Travel Center, #903
U5-085-15025

Bench Mark: Sq. cut on West edge of East abandoned concrete sign base near the West center of property.
Elev: 1223.44 North 1229.95 West 5185.63 (from SE Cor. Sec. 36-13-3W)

MW-1	rim	1220.87	North	1245.50	NE1/4,NW1/4,SW1/4,SW1/4
	top pipe	1220.50	West	4633.67	Lat= 38.87414 Long = 97.61007
MW-2	rim	1220.83	North	1298.02	NE1/4,NW1/4,SW1/4,SW1/4
	top pipe	1220.46	West	4639.57	Lat= 38.87428 Long = 97.61009
MW-3	rim	1218.23	North	1100.17	NW1/4,NE1/4,SW1/4,SW1/4
Pedestal	top pipe	1220.91	West	4529.14	Lat= 38.87374 Long = 97.60970
MW-4	rim	1223.84	North	1317.10	NE1/4,NW1/4,SW1/4,SW1/4
	top pipe	1223.44	West	4906.57	Lat= 38.87434 Long = 97.61102
MW-5	rim	1218.39	North	1424.93	SW1/4,SE1/4,NW1/4,SW1/4
	top pipe	1218.05	West	4578.06	Lat= 38.87463 Long = 97.60987
MW-6	rim	1220.93	North	1064.58	NE1/4,NW1/4,SW1/4,SW1/4
	top pipe	1220.44	West	4868.22	Lat= 38.87364 Long = 97.61089
MW-7	rim	1217.40	North	1079.54	NE1/4,NW1/4,SW1/4,SW1/4
Pedestal	top pipe	1220.87	West	4625.56	Lat= 38.87368 Long = 97.61004
MW-8	rim	1216.47	North	1347.62	SW1/4,SE1/4,NW1/4,SW1/4
	top pipe	1216.14	West	4375.88	Lat= 38.87441 Long = 97.60916
MW-9	rim	1216.86	North	1276.17	NW1/4,NE1/4,SW1/4,SW1/4
	top pipe	1216.44	West	4376.07	Lat= 38.87422 Long = 97.60916

Lat & Long derived from Salina 7.5' quad map. WGS84

Elevation established from USGS BM M 167 NAVD 88.

If you have any questions, please feel free to call me. Thank you for the opportunity to be of service to you.

July 16, 2018
Dennis L Handke RLS

Salina

NOTE: Figures exhibited within this report are only to be used within the context of this report. Placement of property lines, wells, structures, and roads is based on the available information from county appraiser maps, surveys, site visits, and/or previous vendor reports and should be considered approximate.

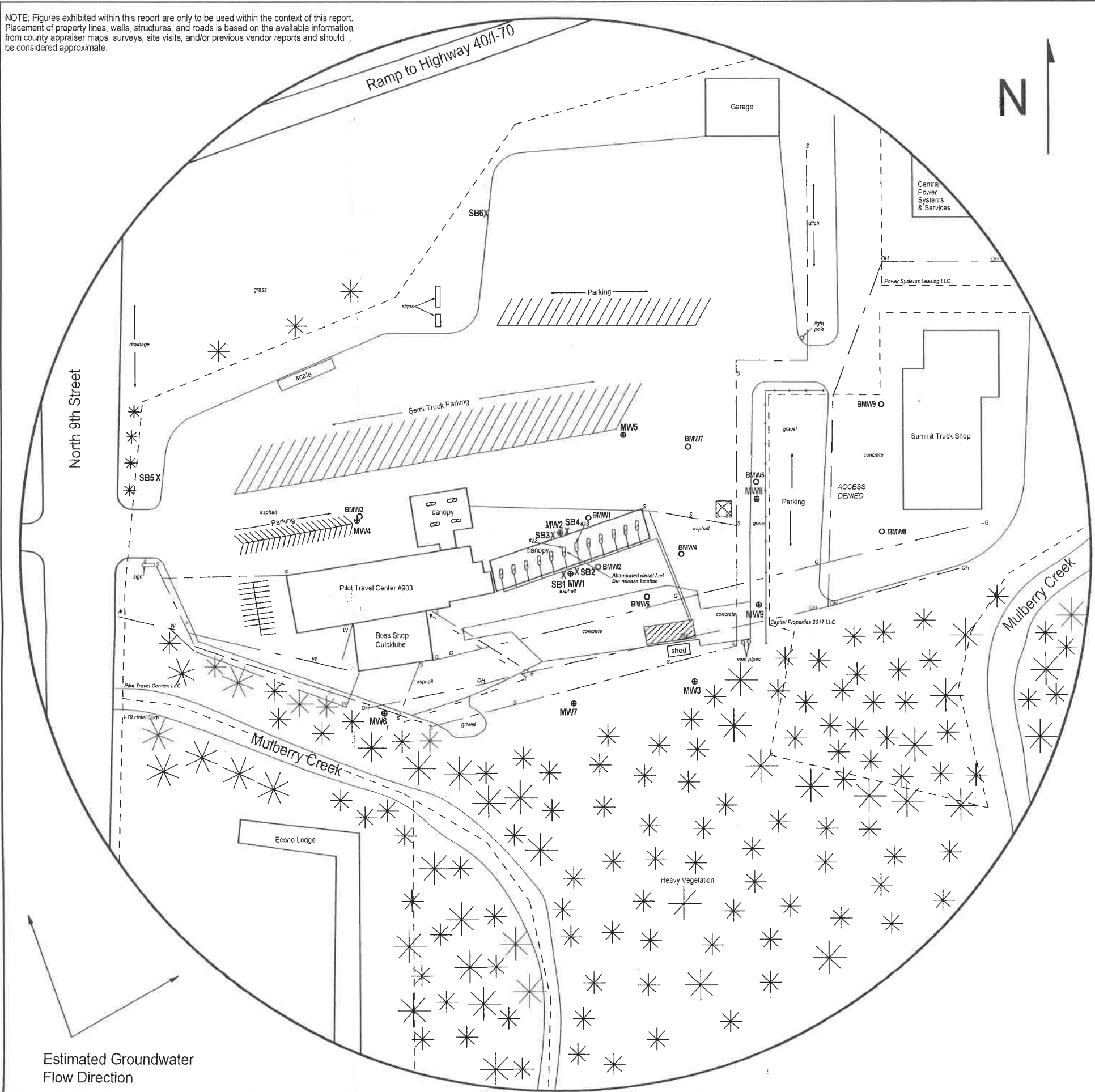


FIGURE 2.2 - 700 FT RADIUS AREA BASE MAP

LEGEND:

- Approximate Location of Active UST Basin, Product Line and Pump Islands
- Approximate Location of Oil Water Separator
- Approximate Location of Property Lines
- Plugged Well
- Monitoring Well (Installed 6/18-21/18)
- Soil Boring (Drilled 6/21/18 and 6/25/18)
- Electric Lines (2 - 6 ft BGS)
- Gas Lines (2 - 6 ft BGS)
- Overhead Lines (25-40 ft high)
- Sanitary Sewer (2 - 6 ft BGS)
- Telephone Lines (2 - 6 ft BGS)
- Water Lines (2 - 6 ft BGS)

NOTE: Utility depths, heights and locations are approximate.
NOTE: SB5 & SB6 were drilled to collect hydrologic samples.



PROJECT:
Pilot Travel Center #903
1944 North 9th Street
Salina, KS
KDHE ID: U5-085-15025
Date: 6/25/18



1311 E 25th St., Suite B (785) 841-8707 office
Lawrence, KS 66046 (785) 865-4282 fax

RECEIVED
SEP 14 2018
BUREAU OF WATER

SW SE NW SW
S56 T13 R3W