

NOTE: Figures exhibited within this report are only to be used within the context of this report. Placement of property lines, wells, structures, and roads is based on the available information from county appraiser maps, surveys, site visits, and/or previous vendor reports and should be considered approximate.

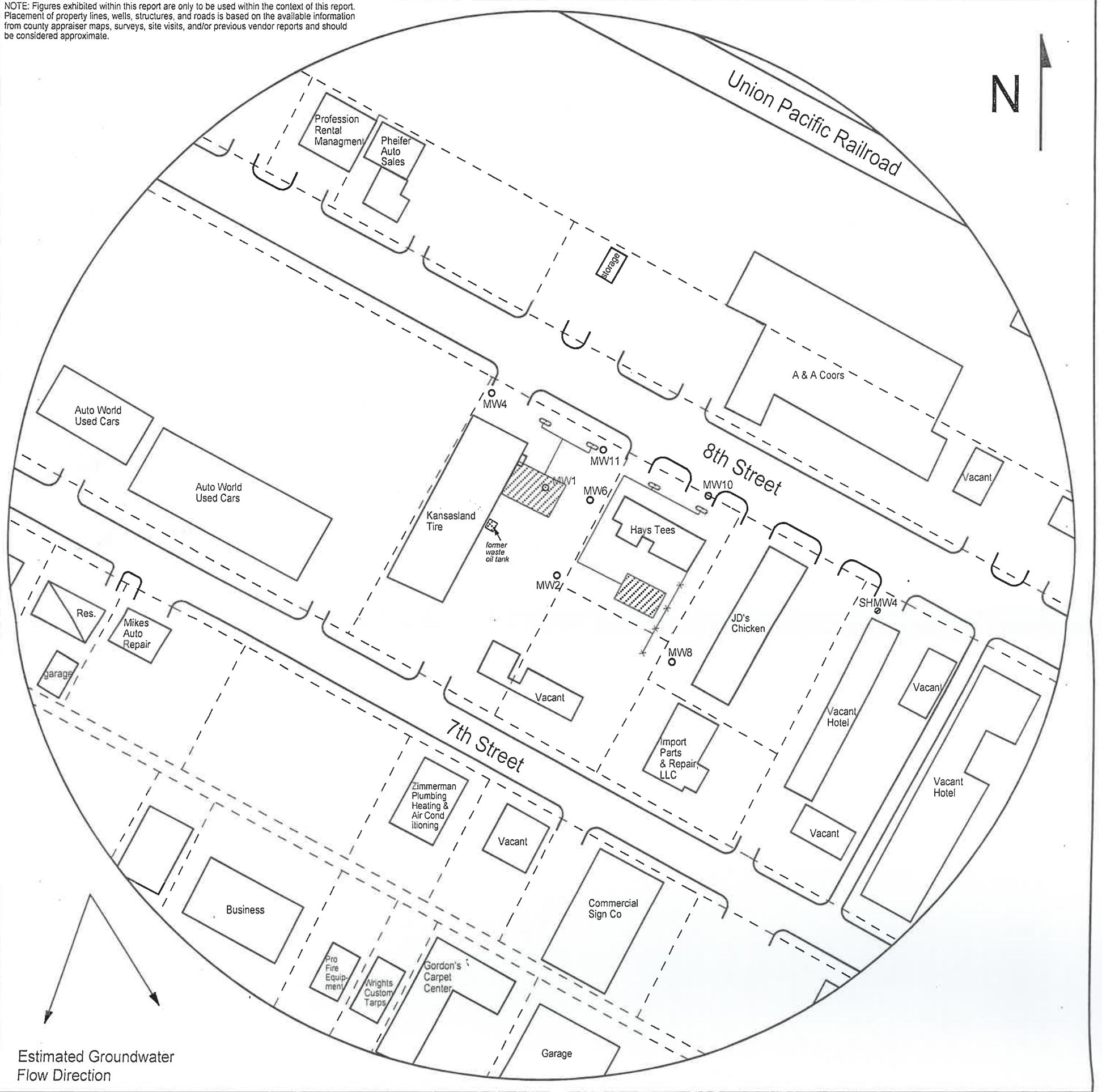


FIGURE 1 - 500 FT RADIUS AREA BASE MAP

LEGEND

- Approximate Location of Former UST Basin, Product Lines & Pump Islands
- Building with Basement
- Approximate Location of Property Line
- Plugged Well
- Destroyed Well

NOTE: Utility depths, heights and locations are approximate.



PROJECT:

Kansasland Tire Co., Inc.
 730 E 8th
 Hays, KS
 KDHE ID: U6-026-00773
 Date: 10/5-6/20



1311 E 25th St., Suite B 785-841-8707 office
 Lawrence, KS 66046 785-865-4282 fax