



# DENNIS L HANDKE

1820 NW 59th Terrace  
TOPEKA, KANSAS 66618  
785-286-4047 Home  
785-217-5864 Cell

Jess Chapman  
Larsen & Associates  
1311 E. 25<sup>th</sup> Street, Suite B  
Lawrence, Kansas, 66046

September 5, 2019

RE: Monitor Well Elevation Survey  
Jct. Hwy 140 & 156, Ellsworth, Kansas

Proj. 19-00DD  
Cunningham Motors  
U5-027-00843

Bnch Mark: Chisled Square on NW corner of concrete Casey's sign base near Southeast corner of property.

Elev: 1605.00      North 5124.54      West 2702.10      (from SE Cor. Sec. 21-15-8W)

MW-14	rim	1606.41	North	5233.19	NE1/4,NE1/4,NE1/4,NW1/4
	top pipe	1606.36	West	2903.22	Lat= 38.73988 Long = 98.21666

Elevation derived from existing project.

Lat & Long derived from Ellsworth 7.5' Quad Maps WGS 84.

If you have any questions, please feel free to call me. Thank you for the opportunity to be of service to you.



RECEIVED  
SEP 24 2019  
BUREAU OF WATER

NOTE: Figures exhibited within this report are only to be used within the context of this report. Placement of property lines, wells, structures, and roads is based on the available information from county appraisal maps, surveys, site visits, and/or previous vendor reports and should be considered approximate.

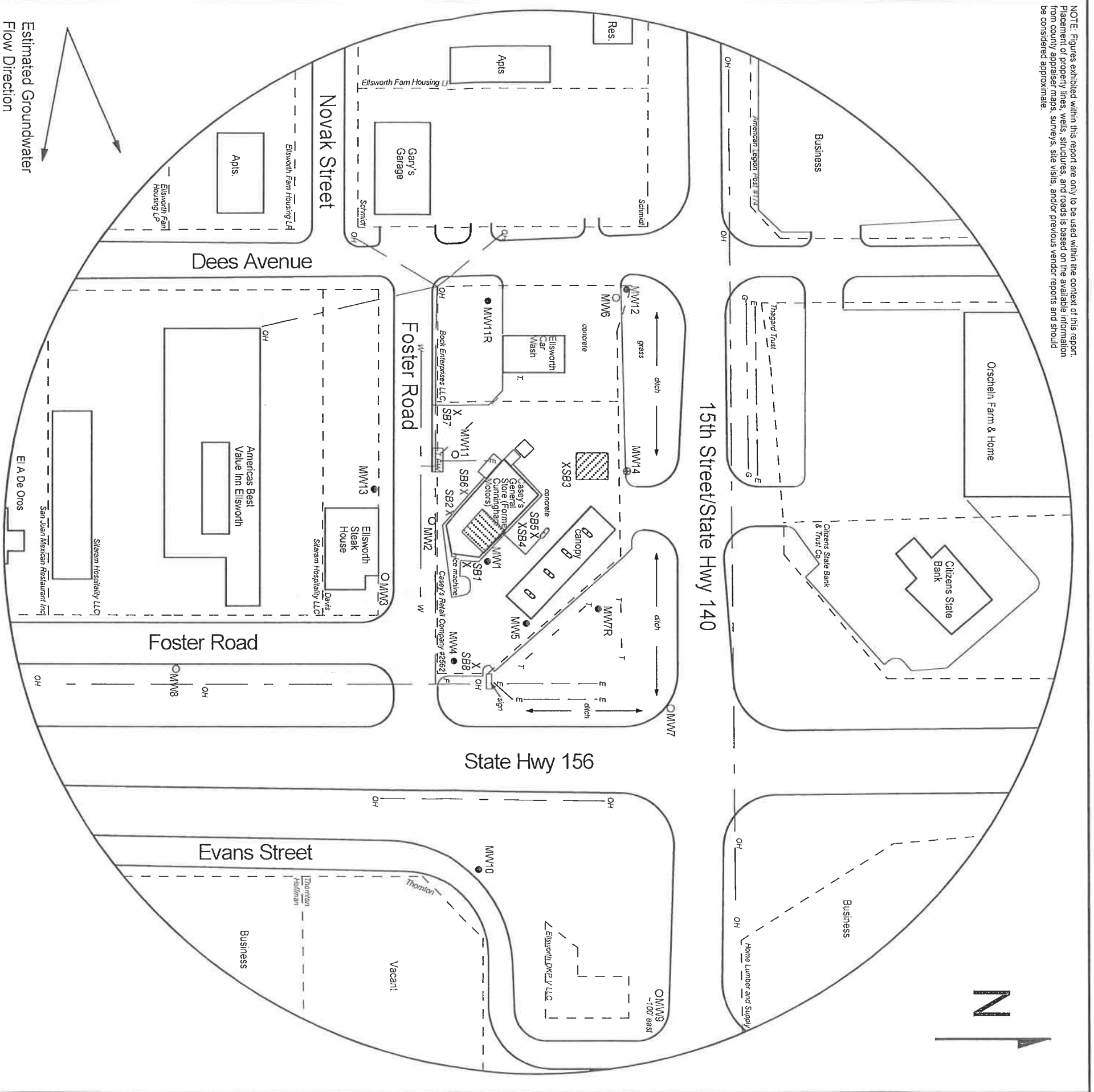


FIGURE 2.2 - 500 FT RADIUS AREA BASE MAP

  
**larsen**  
 & ASSOCIATES, INC.

1311 E 25th St., Suite B      785-841-8707 office  
 Lawrence, KS 66046      785-865-4282 fax

**PROJECT:**

Cunningham Motors  
 Jct Hwy 140 & 156  
 Ellsworth, KS  
 KDHEID: U5-027-00843  
 Date: 8/23/19

0      100 ft

**LEGEND**

- Approximate Location of Former UST Basin,
- Pump Island & Product Lines
- Approximate Location of Active UST Basin & Pump Islands
- Approximate Location of Property Line
- Existing Monitoring Well
- Plugged Well
- Monitoring Well (Installed 8/23/19)
- Soil Boring (Drilled 4/23-24/19 & 8/22-23/19)
- Fire Hydrant
- Electric Lines (1.5 - 3 ft bgs)
- Gas Lines (1.5 - 3 ft bgs)
- Overhead Lines (25'-40' high)
- Telephone Lines (2 - 6 ft bgs)
- Water Lines (2 - 6 ft bgs)

NOTE: The location of the former UST basin is referenced from Tank Management & Services, Inc. figures  
 NOTE: SB7 & SB8 were drilled to collect hydrologic samples.  
 NOTE: Utility depths, heights and locations are approximate.