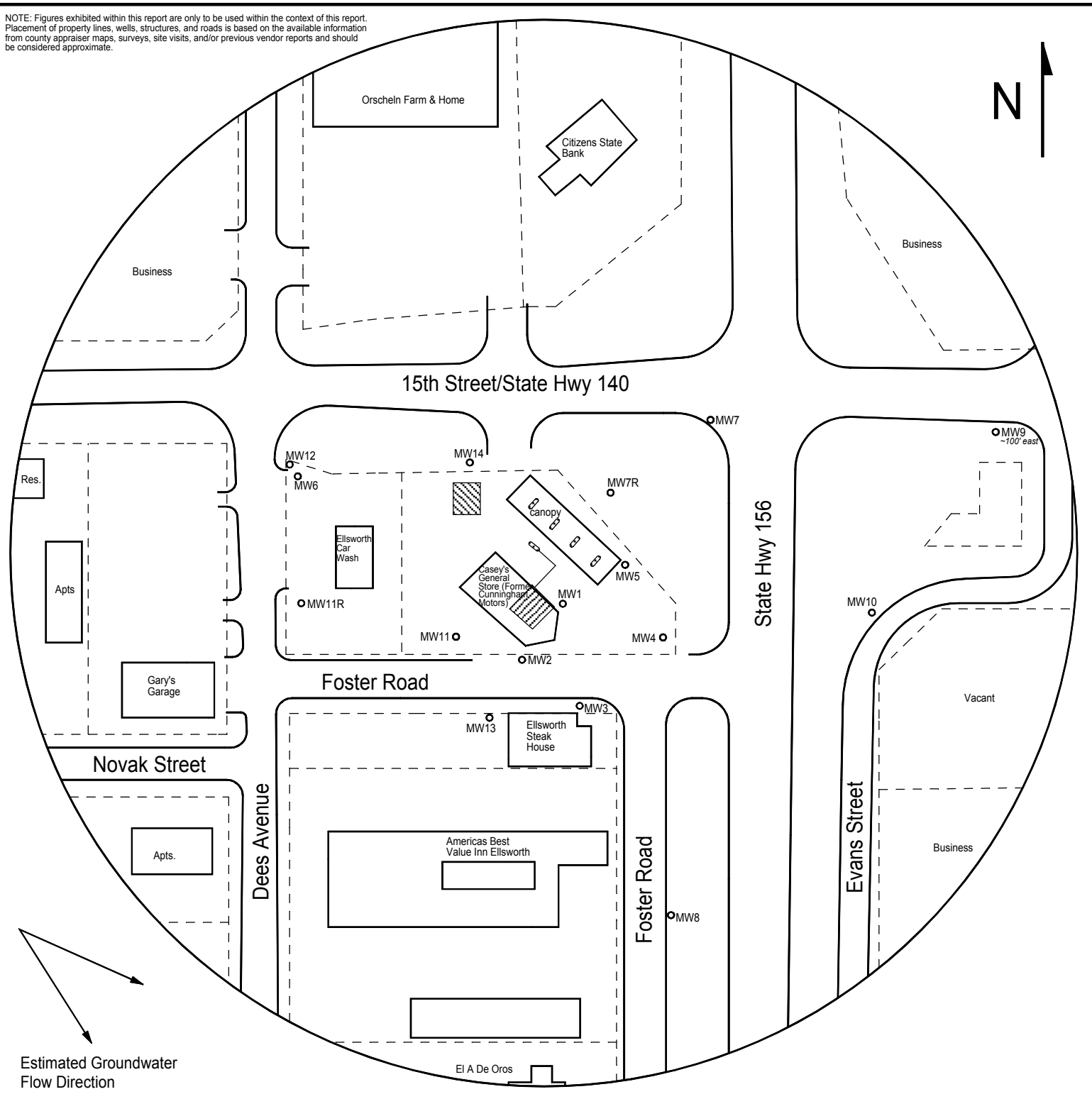




NOTE: Figures exhibited within this report are only to be used within the context of this report. Placement of property lines, wells, structures, and roads is based on the available information from county appraiser maps, surveys, site visits, and/or previous vendor reports and should be considered approximate.



**FIGURE 1 - 500 FT RADIUS AREA BASE MAP**

**LEGEND**

- Approximate Location of Former UST Basin, Pump Island & Product Lines
- Approximate Location of Active UST Basin & Pump Islands
- Approximate Location of Property Line
- Plugged Well

**PROJECT:**

Cunningham Motors  
 Jct Hwy 140 & 156  
 Ellsworth, KS  
 KDHE ID: U5-027-00843  
 Date: 2/18/20



1311 E 25th St., Suite B    785-841-8707 office  
 Lawrence, KS 66046        785-865-4282 fax

NOTE: Utility depths, heights and locations are approximate.